

DAWSON POINTE CAPE





The Dawson Pointe Cape provides classic curb appeal coupled with lots of family friendly interior features. A walk through the large foyer will lead you past a nicely sized home office made private with its double doors. Just beyond that, you'll enter the beautiful open kitchen/dining area and adjacent living room with dramatic vaulted ceiling and custom gable windows. The plan's "chef's kitchen" is exquisitely designed with a large island/bar and custom cabinetry features throughout. The first-floor owner's suite includes a large walk-in closet and ensuite bath with walk-in shower, soaking tub, custom style cabinetry and privacy compartment. The upper level includes two large bedrooms - each with a walk-in closet and an additional full bath.

DAWSON POINTE CAPE

Benchmark Specifications

Special Package Pricing available through June 2023



3 BEDROOMS
2.5 BATHS

2714 SQ. FT.
(INCLUDES COMPLETION OF
1,000 SQ. FT. UPPER LEVEL
AREA)

Please note: Kitchen and bath cabinet configurations as shown are standard in the House of the Month Package.

Upgraded cabinet styles, hardware and finish colors are shown for depiction purposes and not included.

Personal selections for cabinets and hardware to be priced separately. All appliances (other than range hoods shown) are optional.



Please Note: Shown with Site-Built Front Porch

EXTERIOR FEATURES

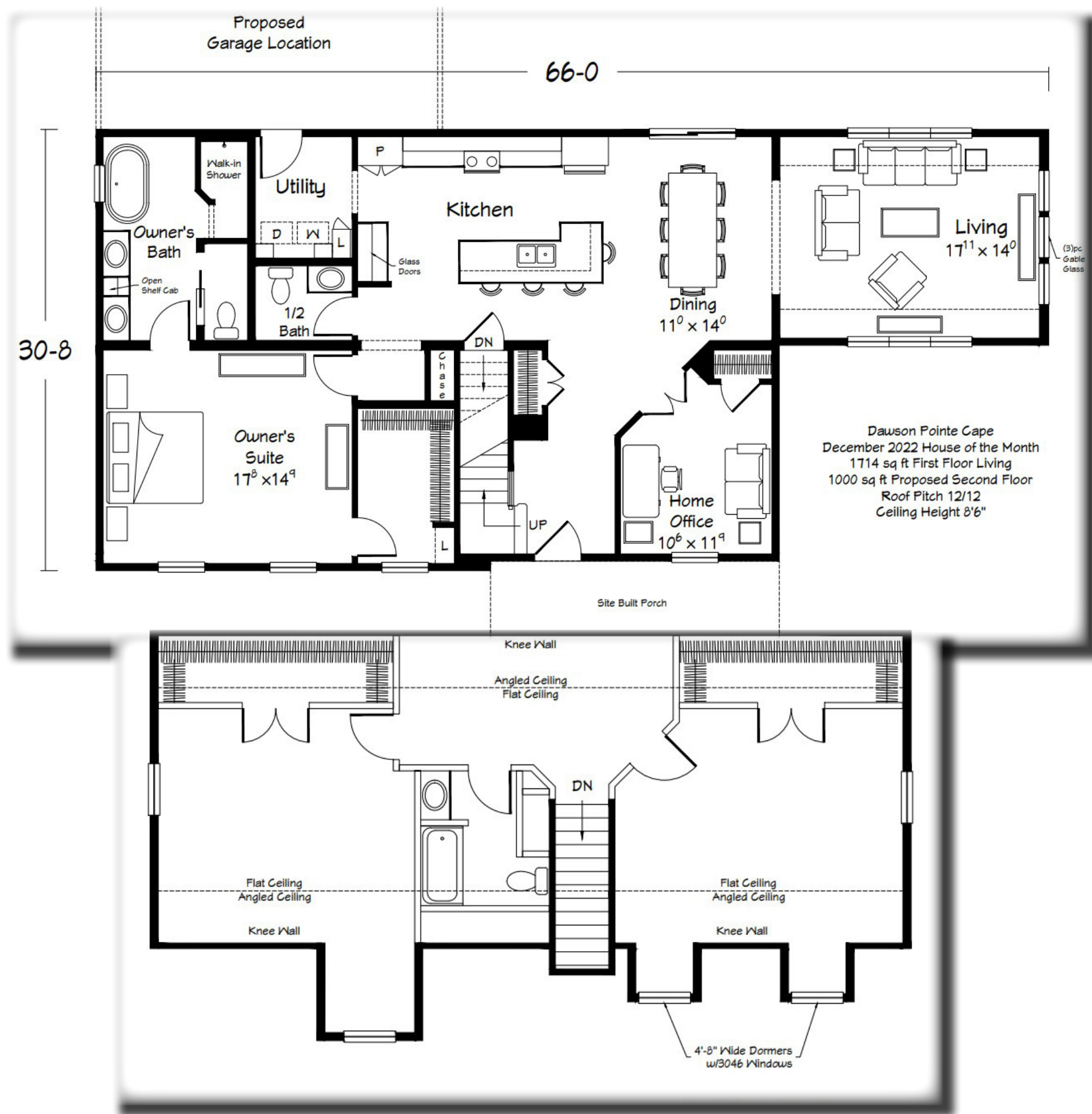
Included in the House of the
Month Package

- 4-Over-1 Window Grids Throughout
- (5) Pairs of Louvered Shutters
- 8" Bump-Out Area at Owner's Suite with 12/12 pitch gable dormer
- (2) 4'-8" A-Style Dormers
- Vaulted Ceiling in Living with 3-Piece Upper Gable Glass
- Vinyl Board & Batten Siding at Front Porch Area and (2) Dormers
- RCDU Front Door (primed)
- (1) Additional Front Porch Light (2 Total 59016BK Lights)
- Fire-Rated Door at Garage Entry

- 8'-6" Ceiling Height Throughout
- 2-Panel Interior Doors with Bungalow Trim Package
- Oak Stair Treads with Primed White Poplar Risers & "Prairie" Railing
- MSI - Cyrus XL - LVP Flooring in Foyer, LR, DR, Kitchen, Owner's Suite, Office
- MSI - Trecento - LVP Flooring in Owner's Bath, Half Bath, Utility
- Linen Cabinet, (2) Wall Cabinets & Wood Shelf at W/D Area
- (5) Recessed Ceiling Lights in Kitchen
- Tall Kitchen Wall Cabinets with Crown Molding to Ceiling
- Tall/Deep refrigerator Overhead Cabinet with (2) Refrigerator End Panels (Refrigerator Optional)
- Tall Pantry Cabinet
- Mullion Glass Doors at Hutch
- Garbage Base Pull-Out Cabinet
- HanStone Kitchen Countertops with Undermount Stainless Steel Sink (Group 2 HanStone)
- 3x6 Subway Backsplash Tile
- (3) #44032 Pendant Lights over Island
- (1) #44029 Chandelier Light in Dining
- (1) #44029 Chandelier Light over Tub in Owner's Bath
- Walk-In, Full Tile "Mini-Infinity" Shower with Glass Wall in Owner's Bath
- Free Standing Tub in Owner's Bath

INTERIOR FEATURES

Included in the House of the
Month Package





KITCHEN/DINING



LIVING ROOM

OWNERS SUITE

