

NORTHPOINTE TWO STORY




Ritz-Craft
Custom Building Simplified™

November 2022
House of the Month



The Northpointe Two Story provides classic curb appeal coupled with lots of family friendly interior features. A walk through the large foyer will lead you past a nicely sized home office made private with its double doors. Just beyond that, you'll enter the beautiful open kitchen/dining area and adjacent living room with dramatic vaulted ceiling and custom gable windows. The plan's "chef's kitchen" is exquisitely designed with a large island/bar, built-in appliances and custom cabinetry features throughout. The first-floor owner's suite includes a large walk-in closet and ensuite bath with walk-in shower, soaking tub, custom style cabinetry and privacy compartment. The second floor includes three large bedrooms--each with a walk-in closet and family and guests will enjoy the big upper-level loft room for movies and gaming.



NORTHPOINTE TWO STORY

Benchmark Specifications

Special Package Pricing available through May 2023

4 BEDROOMS
2.5 BATHS
LOFT

3148 SQ. FT.

Please note: Kitchen and bath cabinet configurations as shown are standard in the House of the Month Package.

Upgraded cabinet styles, hardware and finish colors are shown for depiction purposes and not included.

Personal selections for cabinets and hardware to be priced separately. All appliances (other than range hoods shown) are optional.

EXTERIOR FEATURES

Included in the House of the
Month Package



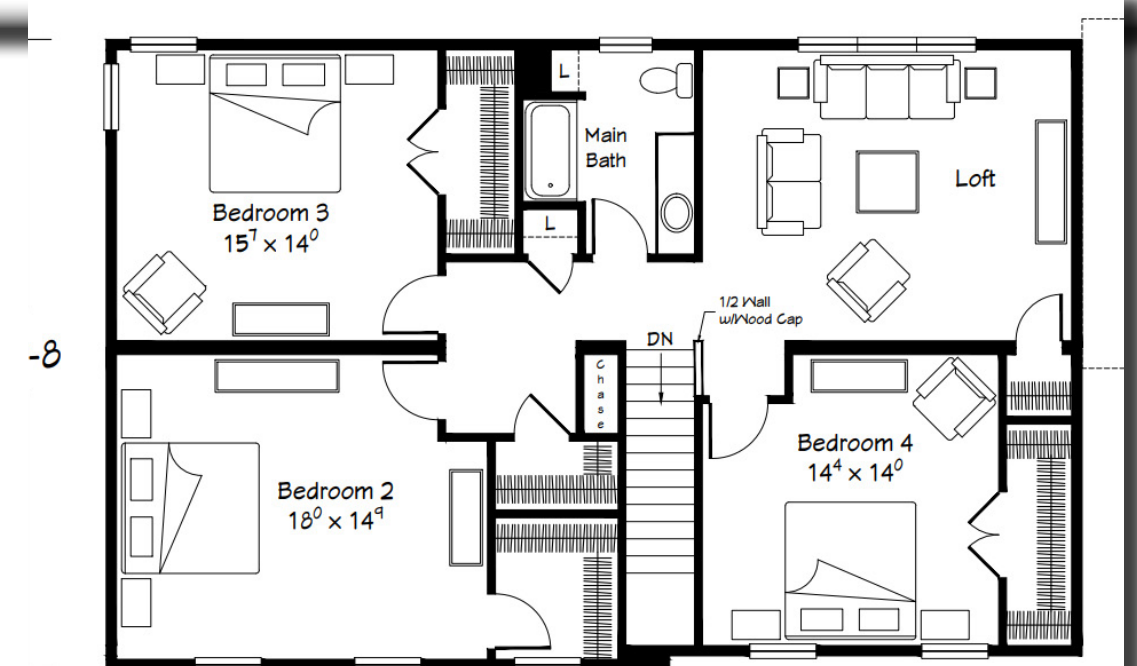
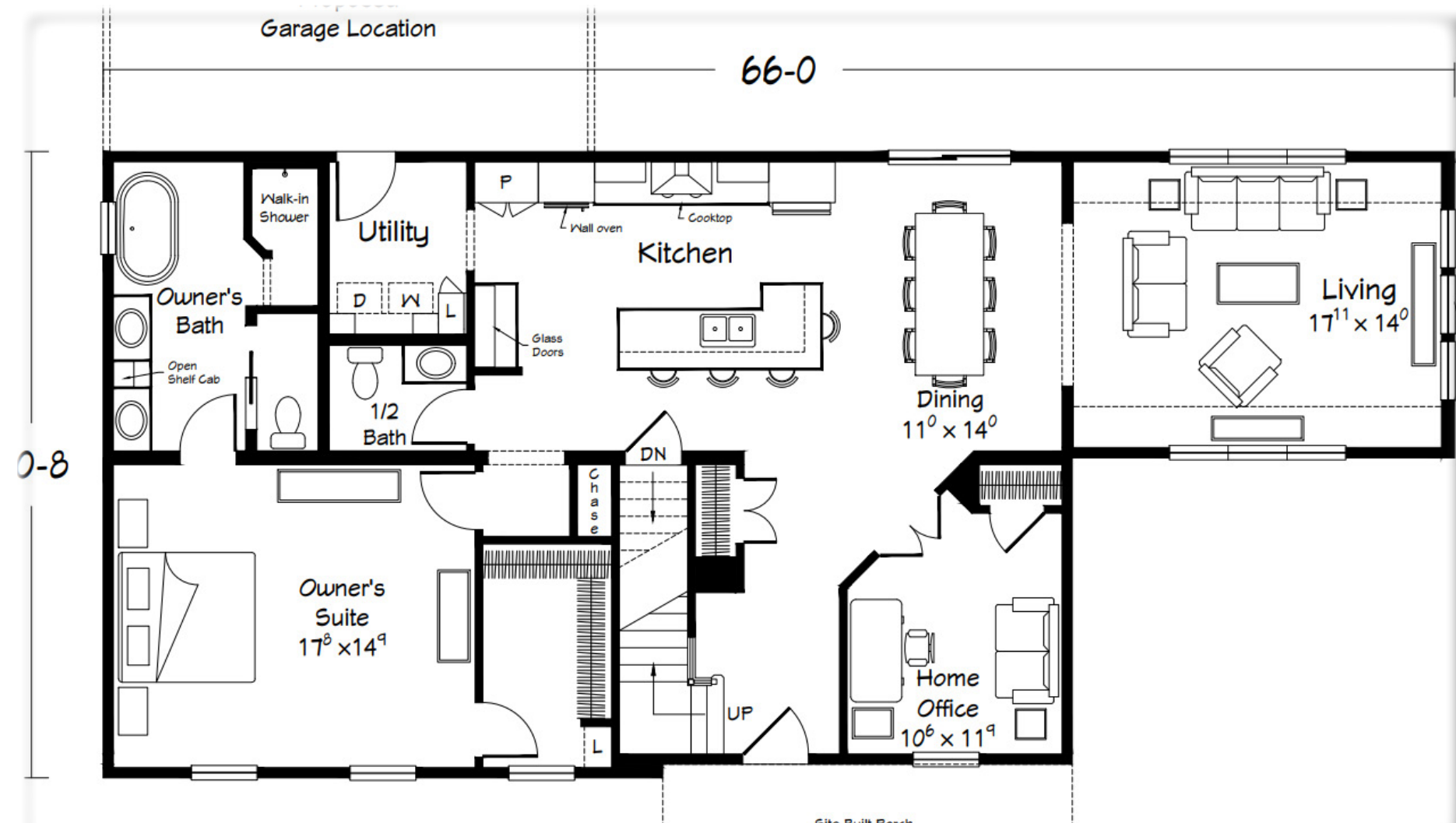
Please Note: Shown with site-built porch and garage

- 4 over 1 window grids throughout
- (9) pairs of louvered shutters
- 8" bump-out area at Owner's Suite/BR2 with 7/12 pitch gable dormer
- Full shingled eave return at front dormer
- Vaulted Ceiling in Living with 3-piece upper gable glass
- Vinyl board & batten siding at front porch area
- RCDU front door (primed)
- (1) additional front porch light (2 total 59016BK lights)
- Fire-rated door at garage entry

- 8'-6" Ceiling Height Throughout (9' 1st Floor Ceiling Height Option Available)
- 2-Panel Interior Doors with Bungalow Trim Package
- Oak Stair Treads with Primed White Poplar Risers & "Prairie" Railing
- Mohawk "Founder's Trace" LVP Flooring in Foyer, LR, DR, Kitchen, Utility, 1/2 Bath, Owner's Bath & Hall (At Owner's Suite Entry)
- Linen Cabinet, (2) Wall Cabinets & Wood Shelf at W/D Area
- (5) Recessed Ceiling Lights in Kitchen
- Tall Kitchen Wall Cabinets with Crown Molding to Ceiling
- Stacked Overhead Cabinets with Open Storage
- Tall/Deep refrigerator Overhead Cabinet with (2) Refrigerator End Panels (Refrigerator Optional)
- Tall/Deep Pantry Cabinet
- 36" Wood Chimney Range Hood
- (3) Wall-Wine Cabinets with Mullion Glass Doors
- Garbage Base Pull-Out Cabinet
- Double Wall Oven Cabinet (Appliances Optional)
- Prep for Electric Cooktop (Appliance Optional)
- HanStone Kitchen Countertops with Undermount Stainless Steel Sink (Group 2 HanStone)
- Six3 Tile Backsplash in Kitchen
- (2) Driftwood Pendant Lights over Island (41035CF218888)
- (1) Driftwood Chandelier Light in Dining (41010CF219888)
- (1) Driftwood Chandelier Light over Tub in Owner's Bath (41010CF219888)
- Walk-In, Full Tile "Mini-Infinity" Shower with Glass Wall in Owner's Bath
- Free Standing Tub in Owner's Bath

INTERIOR FEATURES

Included in the House of the
Month Package





KITCHEN/DINING



LIVING ROOM/LOFT

OWNERS SUITE

