

OSPREY RANCH




Ritz-Craft
Custom Building Simplified™

October 2022
House of the Month



The compact Osprey Ranch has the feel and features of a much larger plan. The kitchen and dining areas have an open view of the living room and its entertainment center with floating cabinetry and shelves. A well appointed utility room is just off the dining area and features wall cabinets and shelving over the washer/dryer location and an exterior door for access to rear deck or patio space. The secondary bedrooms in this split-bedroom plan are nicely sized with good closet space. The private master suite includes a walk-in closet and ensuite bath with double vanity, privacy compartment, soaking tub and seated shower. The 1421 square foot Osprey can be the perfect home for first-time buyers as well as for empty nesters looking for an economical downsizing plan.



3 BEDROOMS
2 BATHS

1421 SQ. FT.

OSPREY RANCH

Homestead Series Specifications

Special Package Pricing available through April 2023

Please note: Kitchen and bath cabinet configurations as shown are standard in the House of the Month Package.

Upgraded cabinet styles, hardware and finish colors are shown for depiction purposes and not included.

Personal selections for cabinets and hardware to be priced separately. All appliances (other than range hoods shown) are optional.

EXTERIOR FEATURES

Included in the House of the
Month Package

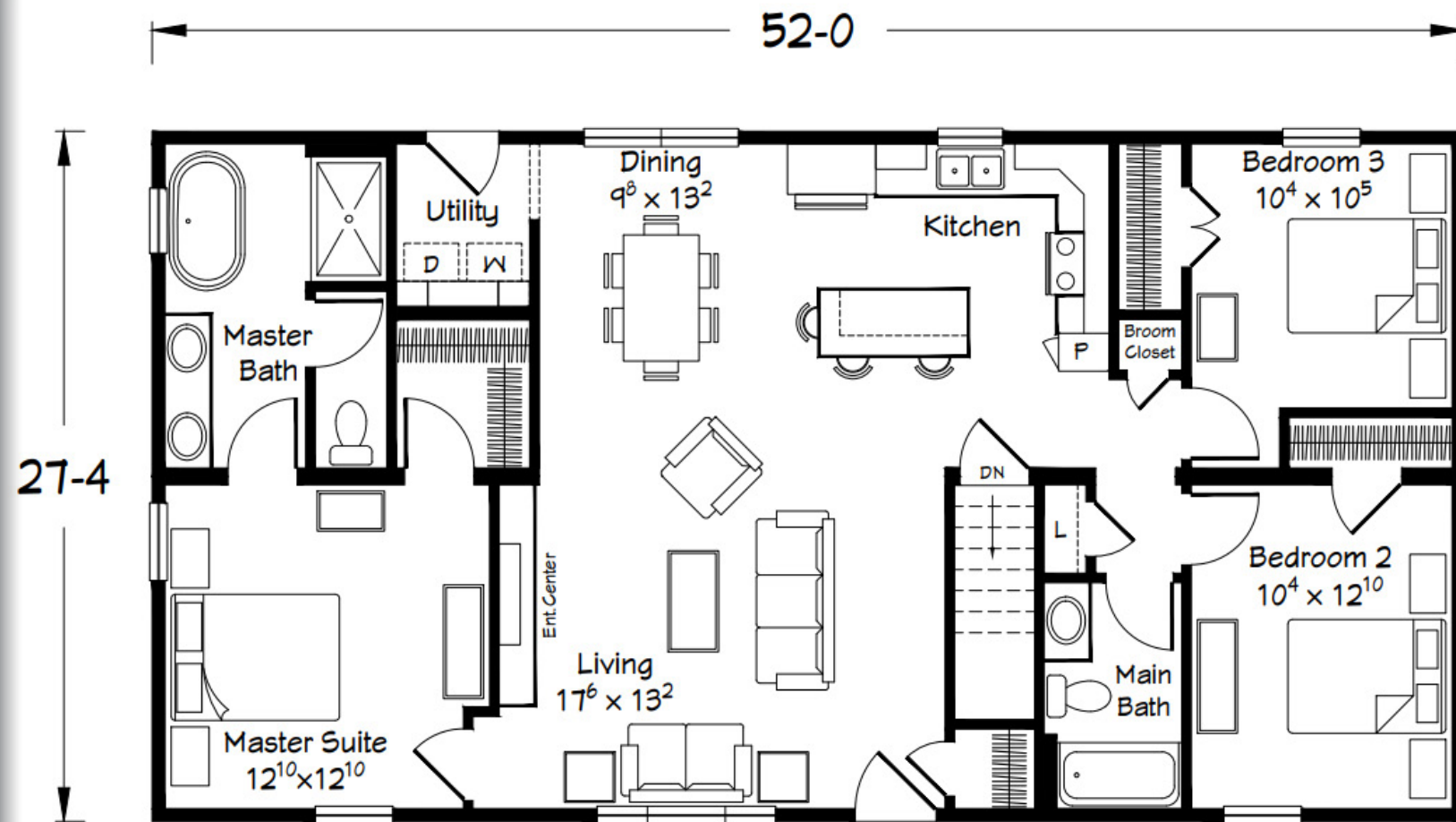


Please Note: Shown with site-built porch

- 4 over 1 window grids throughout
- (2) pairs of louvered shutters
- Homestead “First Impression” wide trim for front door and included picture window
- RCDQ front door painted “Redwood” (Midwest Div. door is RCDQH with “Brick Red” paint)
- RCDZ (NE) or RCDZH (MW) rear door with clear glass and integral blinds (primed-paint optional)
- White vinyl corners

INTERIOR FEATURES

Included in the House of the
Month Package



- 8'-6" ceiling height throughout
- 36" Tall overhead cabinets in Kitchen
- Tall/Deep refrigerator overhead cabinet with (2) (REP) end panels
- Tall pantry cabinet
- (2) hanging pendant lights over island/bar
- Wall cabinets with wood shelf over W/D location
- MOHAWK "Founders Trace" LVP in Living, Dining, Utility, Kitchen and Hall areas
- TRECENTO 12"x24" LVT in Master Bath
- Custom "floating entertainment center" in Living Room (refer to shop plan)
- 2-panel interior doors with Bungalow Trim package
- 60"x34" pedestal tub in Master Bath
- 60"x34" "AcrylX" shower with molded seat and slide-by shower door



KITCHEN/DINING



LIVING ROOM

MASTER SUITE

