

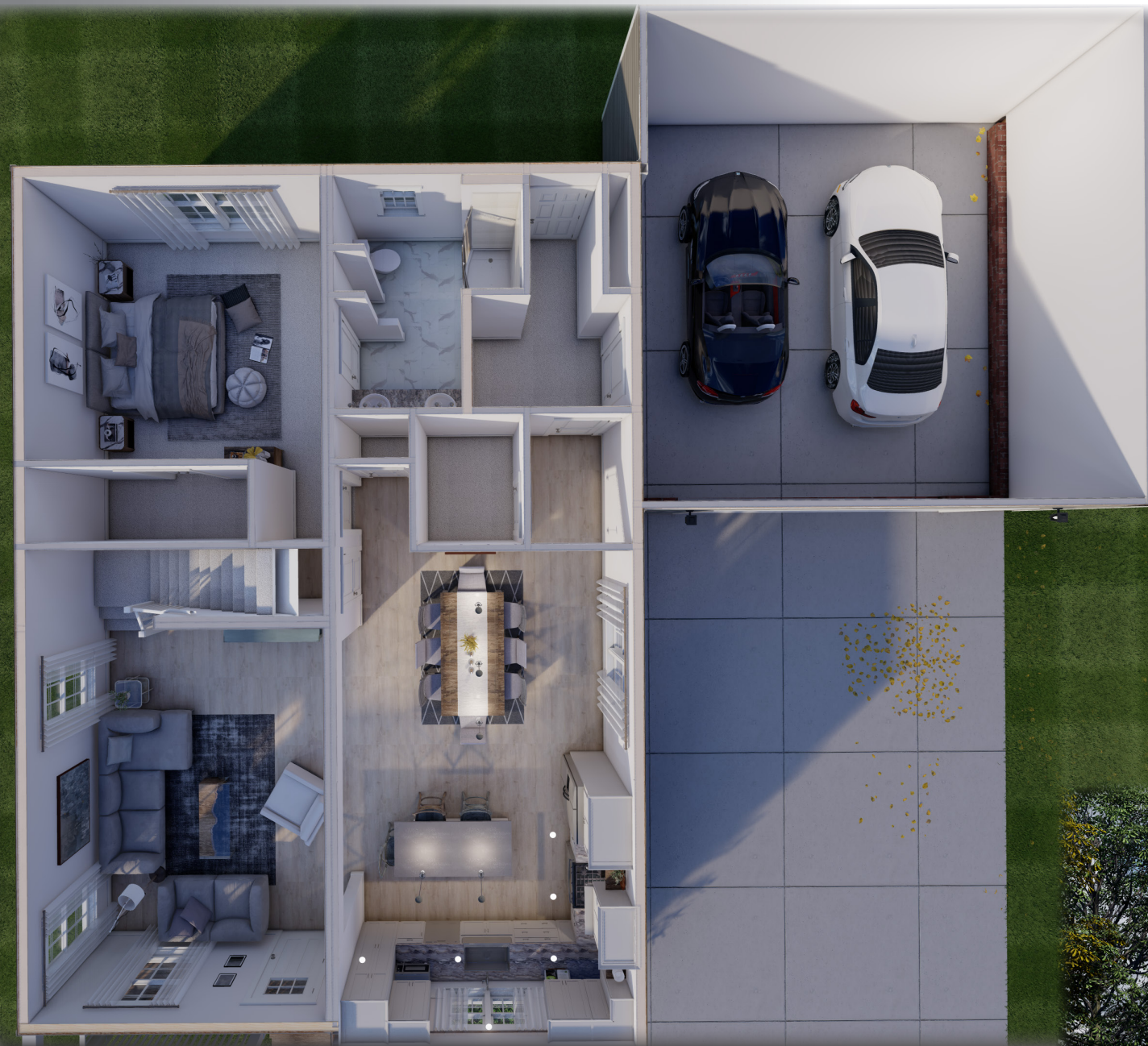
# ANSON II TWO STORY



  
**Ritz-Craft**  
Custom Building Simplified™

August 2022  
House of the Month





The all new, Anson II plan is a larger version of our popular Homestead Series, Anson Two Story with expanded living space and a first-floor master suite. At just over 2500 sf, the Anson II features a large kitchen with a prep/dining island and an open view of the adjacent living and family dining areas. The first floor, “owner’s suite” includes a walk-in closet and well-appointed bath with double vanity, bowfront tiled shower and linen storage. The upper level offers a large loft room for gaming, movies and entertainment in addition to the three second floor bedrooms. All bedrooms include walk-in closets and Bedroom 2 includes a private bath complete with double vanity and seated shower. The Anson II’s feature-packed layout makes it a great choice for those seeking larger plan elements in a design that can be built on smaller footprint homesites.

# ANSON II TWO STORY

Homestead Specifications

Special Package Pricing available through February 2023



**4 BEDROOMS  
3.5 BATHS  
LOFT**

---

**2520 SQ. FT.**

Please note: Kitchen and bath cabinet configurations as shown are standard in the House of the Month Package.

Upgraded cabinet styles, hardware and finish colors are shown for depiction purposes and not included.

Personal selections for cabinets and hardware to be priced separately. All appliances (other than range hoods shown) are optional.



# EXTERIOR FEATURES

---

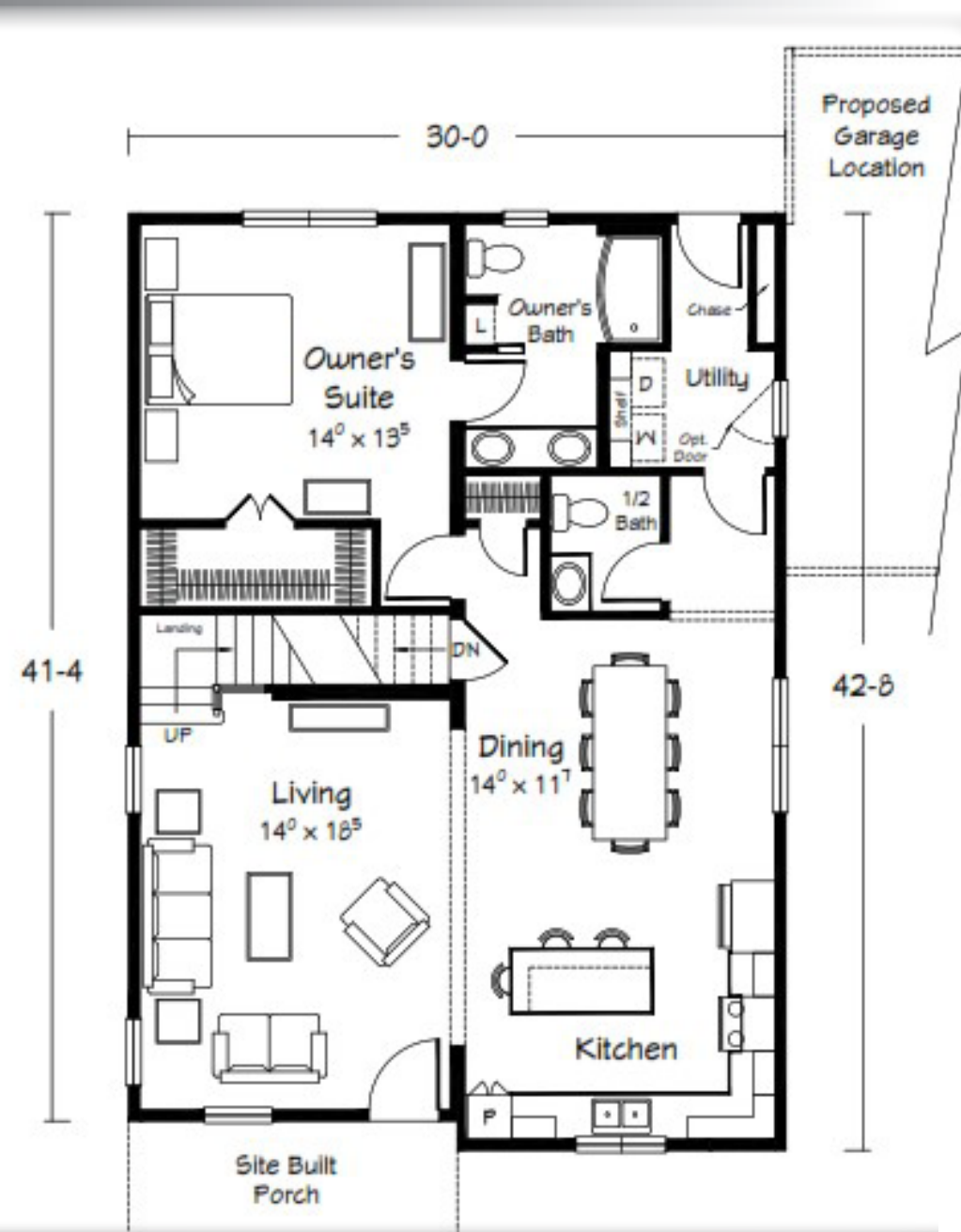
Included in the House of the  
Month Package

- 6 over 6 window grids throughout
- (4) pairs of louvered shutters
- RCDDZ front door (primed--paint optional)
- (1) 20" x 30" decorative, rectangle gable louver
- Vinyl board & batten siding for front porch area and large upper gable
- Full shingled eave return at large upper gable

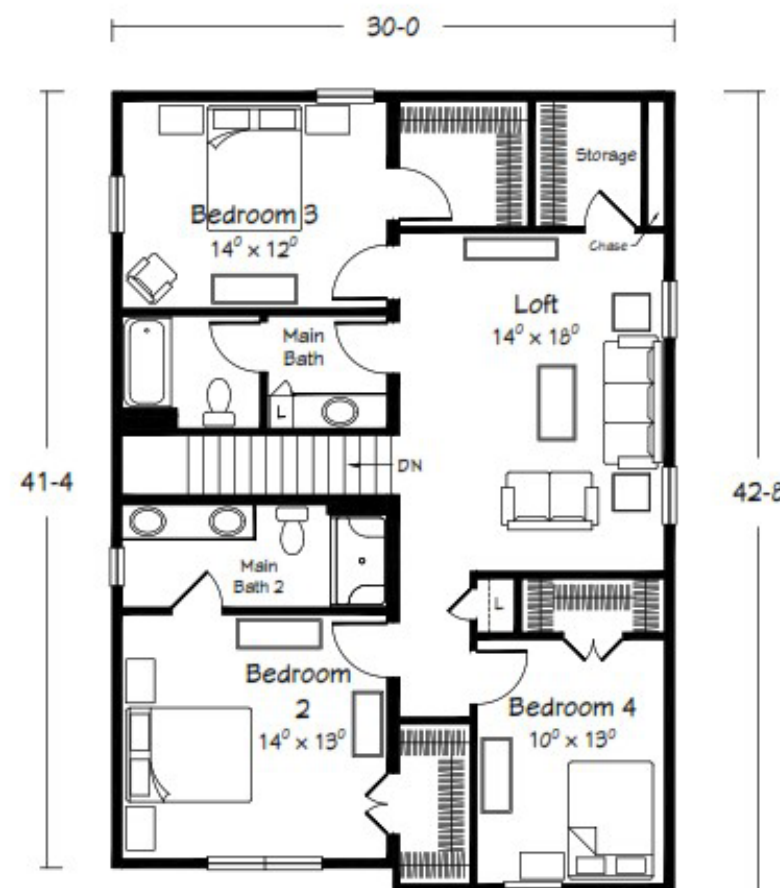


Please Note: Shown with site-built porch & garage





- 8'-6" ceiling height throughout first floor (9' option available)
- 8'-0" ceiling height throughout second floor (8'-6" option available)
- 42" height kitchen wall cabinets with crown molding to ceiling
- Tall/Deep refrigerator overhead cabinet with (2) refrigerator end panels
- Tall/Deep pantry cabinet
- (5) recessed kitchen ceiling lights (includes 1 over sink)
- (2) hanging pendant lights over island/bar
- 3" x 6" subway tile kitchen backsplash
- HANSTONE countertop on kitchen island/bar
- (2) 24" edge banded shelves on each side of range hood (replacing cabinets)
- 30" Mantel Wood range hood
- Wall-Pie corner wall cabinet
- Stainless Steel, single bowl farm sink
- 21" pull-out trash cabinet, (1) pots & pans drawer cabinet and (1) cookie-sheet divider cabinet
- (2) w1530 wall cabinets with wood shelf over W/D area
- 2-panel interior doors throughout with Bungalow trim package
- Prairie style stair railing
- LVP flooring in LR, Kitchen, Dining, 1/2 Bath, Utility and 1st floor hall areas
- LVT flooring in Owner's Bath
- Bowfront shower pan with tiled walls and chrome roller-door enclosure
- Ventilated wood linen shelving in Owner's bath
- Seated ACRYLIX Subway shower with chrome roller-door enclosure in BR2 ensuite bath



# INTERIOR FEATURES

Included in the House of the  
Month Package





# KITCHEN

---





# **LIVING ROOM**

---





## **BEDROOM 2 & BATH** **(SECOND MASTER SUITE)**

---

