

# JUPITER BAY TWO STORY



  
**Ritz-Craft**  
Custom Building Simplified™

July 2022  
House of the Month





The Jupiter Bay Two Story's classic style and curb appeal are timeless. Although moderately sized, the 2340 sq. ft. floorplan includes many features typically found in much larger plans. A step past the foyer provides views of a great-room style space that includes connected living, dining and kitchen areas--perfect for family interactions and entertaining guests. The kitchen includes great counter space with a large island for meal-prep and casual dining. The first-floor master suite includes a nice walk-in closet and large master bath complete with a long double vanity, free-standing tub and a shower compartment with large, tiled shower. The second floor provides three additional bedrooms and a large loft-room with a built-in wet bar.



# JUPITER BAY TWO STORY

Benchmark Specifications

Special Package Pricing available through January 2023

**4 BEDROOMS**  
**2.5 BATHS**  
**LOFT**

---

**2340 SQ. FT.**

Please note: Kitchen and bath cabinet configurations as shown are standard in the House of the Month Package.

Upgraded cabinet styles, hardware and finish colors are shown for depiction purposes and not included.

Personal selections for cabinets and hardware to be priced separately. All appliances (other than range hoods shown) are optional.





# EXTERIOR FEATURES

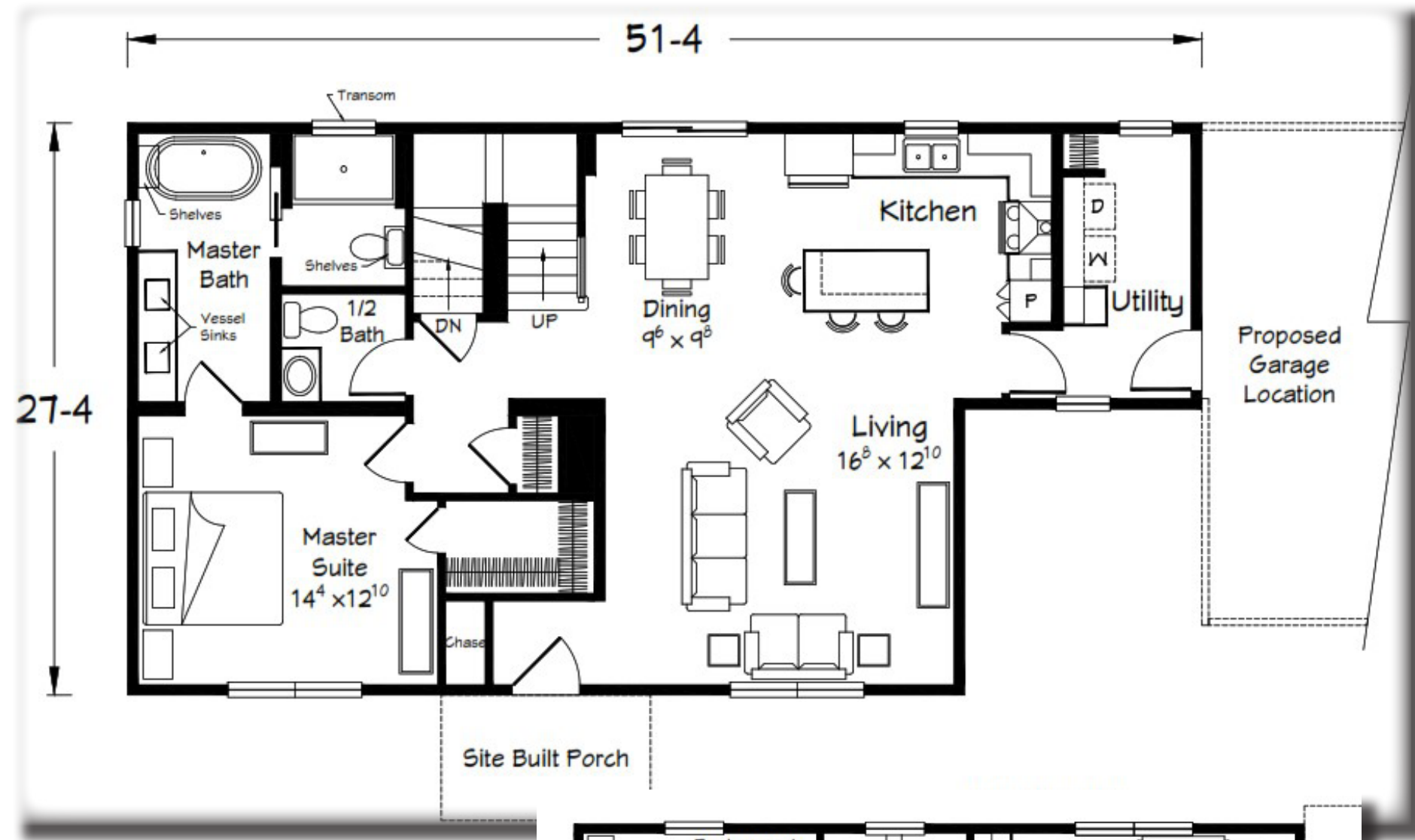
Included in the House of the  
Month Package

- 4 over 1 window grids throughout
- Fixed Transom Window over master bath shower
- (6) pairs of louvered shutters
- Upgraded front porch lights with (1) additional front porch light (9023BK)
- RCDA front door (primed-paint optional)
- Vinyl board & batten siding for 10' wide front porch area
- (2) decorative gable roof dormers with vinyl board & batten siding
- Vinyl board & batten siding for front area of house at utility room with 9-1/4" sill board
- Fire-rated door at garage entry

Please Note: The black windows and fascia/soffit color choice (if selected) may be ordered at optional pricing but is not included in the House of the Month package price.

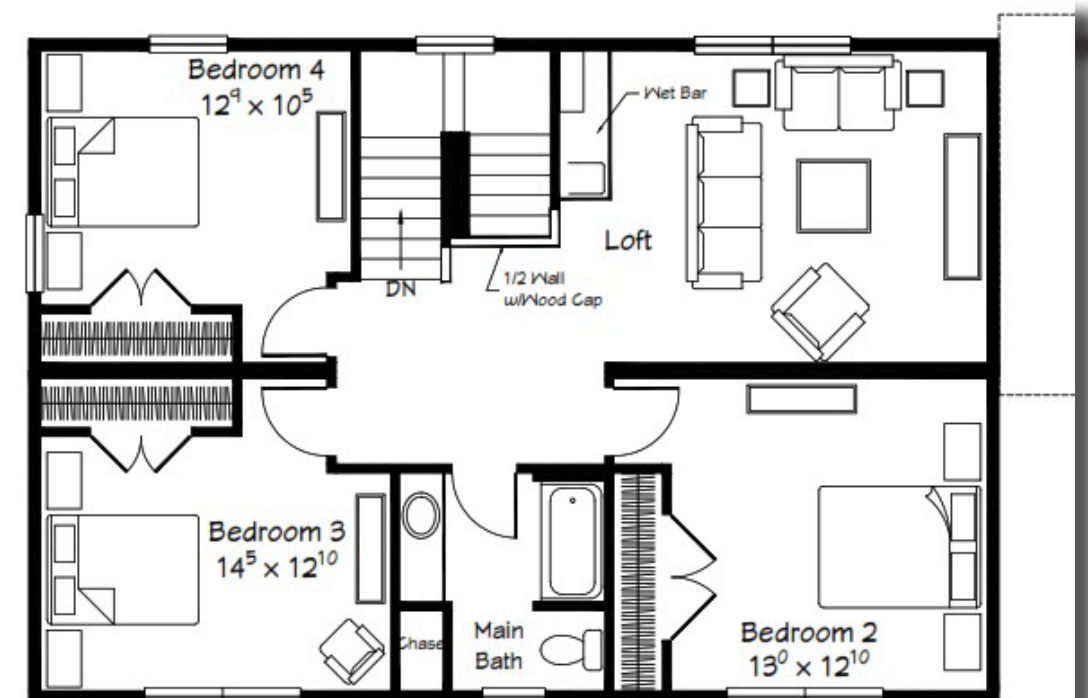


- 8'-6" ceiling height throughout first and second floor (9' first floor ceiling height option available)
- Tall height kitchen wall cabinets (to ceiling) with 6" crown moulding
- Deep refrigerator overhead cabinet with (2) refrigerator end panels
- Polymer carousel in corner base cabinet
- Contemporary cabinet hardware in kitchen
- (2) glass-mullion cabinet doors (flanking range hood)
- Microwave base cabinet in island/bar
- Pots & Pans drawer base in island/bar
- HanStone Quartz Top (Group 2) on perimeter & island w/matching 4" backsplash
- SS Appliances/Hood
- WPC2442L wall cabinet replacing corner wall cabinet in kitchen
- (5) recessed ceiling lights in kitchen (includes 1 over sink)
- (2) hanging pendant lights over island/bar (44032BK)
- (4) recessed ceiling lights in dining room (replacing chandelier)
- Base and wall cabinets (per plan) in utility room with ventilated wood shelving in all utility room locations
- Pocket doors as shown
- "Prairie" style stair railing
- Arts & Craft interior trim with 2-panel interior doors
- Shoal Bay- LVP flooring in Foyer, LR, Kitchen, Utility, DR, Hall, Half-Bath and Master Bath
- VD3B12/TVCD60B/VD3B12 vanity in master bath
- (3) sconce lights in master bath (45910BK)
- (2) edge banded shelves over tub and (2) over toilet in master bath (per plan)
- (2) white square vessel sinks with vessel faucets in master bath
- 60" x 42" shower pan with tiled walls and chrome roller door in master bath compartment
- Oval free-standing tub in master bath
- Wet bar cabinetry with mini-fridge space, bar sink, wine storage and wall shelves in Loft Room (refer to shop print for details)



# INTERIOR FEATURES

Included in the House of the Month Package







**KITCHEN**

---





# LIVING ROOM

---





# MASTER BEDROOM & BATH

---





# LOFT

---

