

JUPITER BAY CAPE




Ritz-Craft
Custom Building Simplified™

June 2022
House of the Month



Whether you're just starting to grow your family or planning for your empty-nester days, the charming "right-sized" Jupiter Bay Cape can fit your needs. The classic plan features an open first floor layout that feels spacious beyond the home's manageable size. After stepping from the foyer, you'll be greeted by views of the interconnected living, dining and kitchen areas. The kitchen includes lots of today's requested features and has a large island/bar for additional prep space and casual dining. The first-floor master suite includes a walk-in closet and nicely appointed master bath with large double vanity, free standing soaking tub and compartmented shower. Finishing the upper level adds two nicely sized secondary bedrooms and a full bath.



3 BEDROOMS
2.5 BATHS

1821 SQ. FT.
(INCLUDES 646 SQ. FT.
SITE-FINISHED UPPER LEVEL)

JUPITER BAY CAPE

Benchmark Specifications

Special Package Pricing available through December 2022

Please note: Kitchen and bath cabinet configurations as shown are standard in the House of the Month Package.

Upgraded cabinet styles, hardware and finish colors are shown for depiction purposes and not included.

Personal selections for cabinets and hardware to be priced separately. All appliances (other than range hoods shown) are optional.



Please Note: Shown with site-built porch & garage

EXTERIOR FEATURES

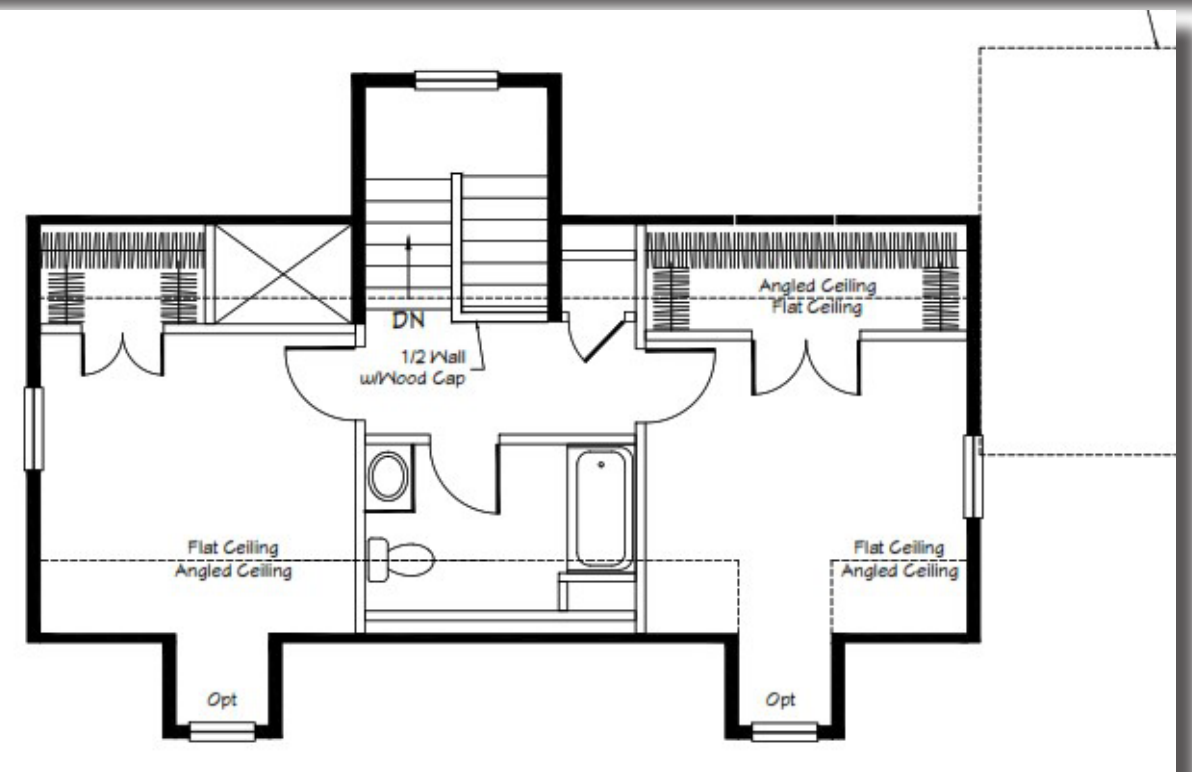
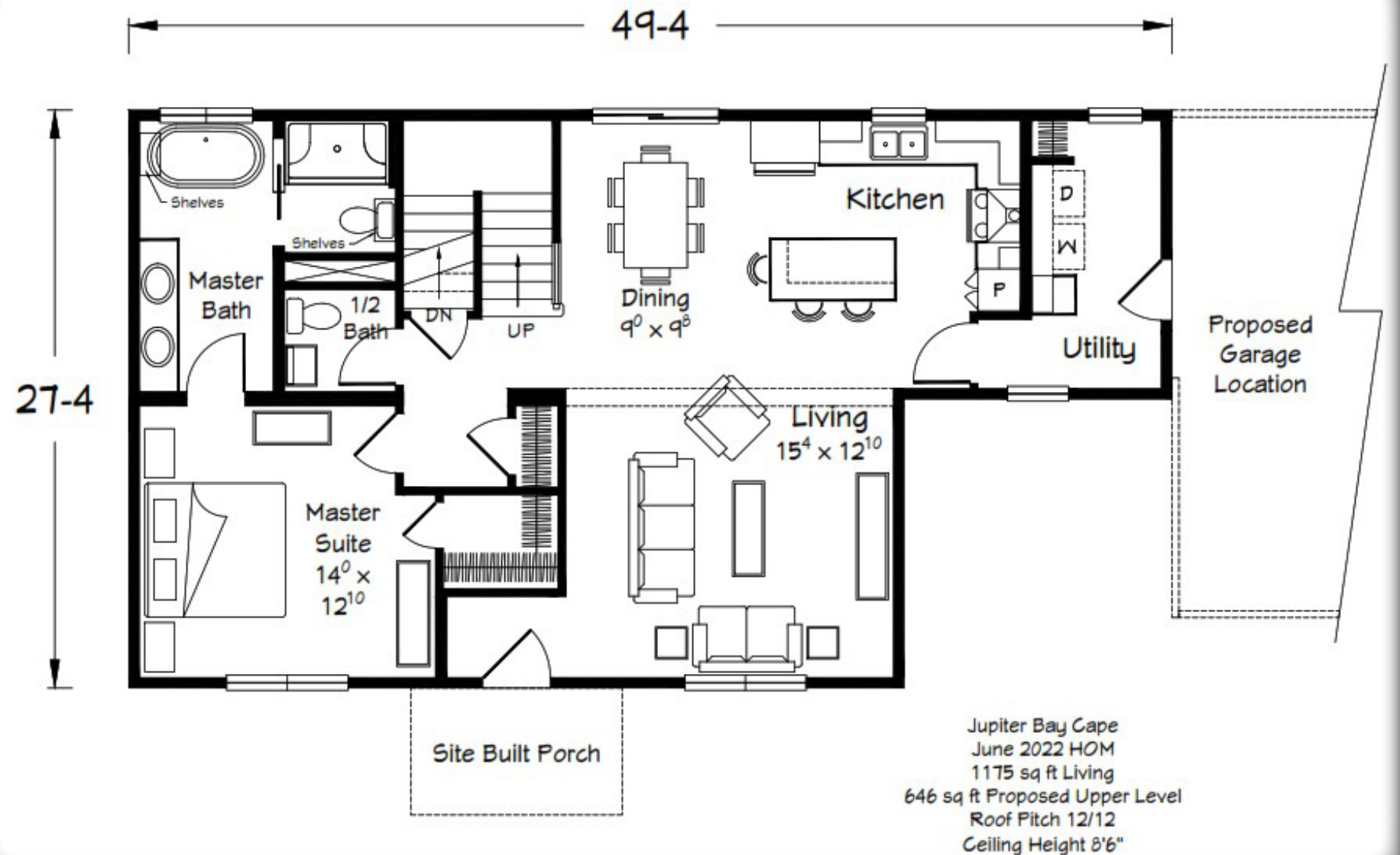
Included in the House of the
Month Package

- (2) 4' front shed roof dormers
- Rear shed roof dormer (at stair tower)
- 4 over 1 window grids throughout
- (3) pairs of louvered shutters
- (1) additional front porch light
- RCDA front door (primed--paint optional)
- Vinyl board & batten siding for 10 wide front porch area
- Vinyl board & batten siding for front dormers
- Vinyl board & batten siding for front area of house at utility room with 9-1/4" sill trim board
- Fire-rated door at garage entry

- 8'-6" ceiling height throughout (9' option available some locations)
- Tall kitchen wall cabinets (to ceiling) with 6' crown moulding
- Deep refrigerator overhead cabinet with (2) refrigerator end panels
- Polymer Lazy Susan in corner base cabinet
- Contemporary Cab Hardware
- (2) glass Mullion cabinet doors (flanking range hood)
- 30" Black SS Chimney Hood IPO standard vent hood/cab
- Microwave base cabinet in island/bar
- Pots and Pans drawer base in island/bar
- Kitchen "Black Farm Sink"
- Kitchen Cambria Quartz Countertop
- 4x12 Glass Backsplash
- WPC2442L IPO CW24 Corner Wall Cab
- (5) recessed ceiling lights in kitchen (includes 1 over sink)
- (2) hanging 44032BK pendant lights over island/bar
- (4) recessed ceiling lights in dining room (replacing chandelier)
- (5) recessed LED in Kitchen IPO standard
- Base and wall cabinets (per plan) with ventilated wood shelves in all utility room locations
- Pocket door as shown
- "Prairie" style stair rail
- Arts & Crafts interior trim with 2-panel interior doors
- Mannington Adura Max LVP Flooring in Foyer, UR, Kitchen, DR, Hall, Half & Master Bath
- VD3B12/TVCD60B/VD3B12 Vanity
- 3 Sconce Lights 45910BK (installed down) IPO of 2 standard vanity lights (sconce on each side of mirror)
- (2) White Square Vessel Sinks w/ Vessel Faucet IPO Standard
- (2) 24" Edge Banded Legacy Shelves with Black Pipe Peg Supports centered over the tub
- (2) 24" Edge Banded Legacy Shelves with Black Pipe Peg Supports centered over the toilet
- 60x34 Ceramic Shower w/SP6034 Pan & Chrome Roller Glass Door IPO Std
- Oval free standing tub in master bath

INTERIOR FEATURES

Included in the House of the
Month Package





KITCHEN



LIVING ROOM

MASTER BEDROOM & BATH

