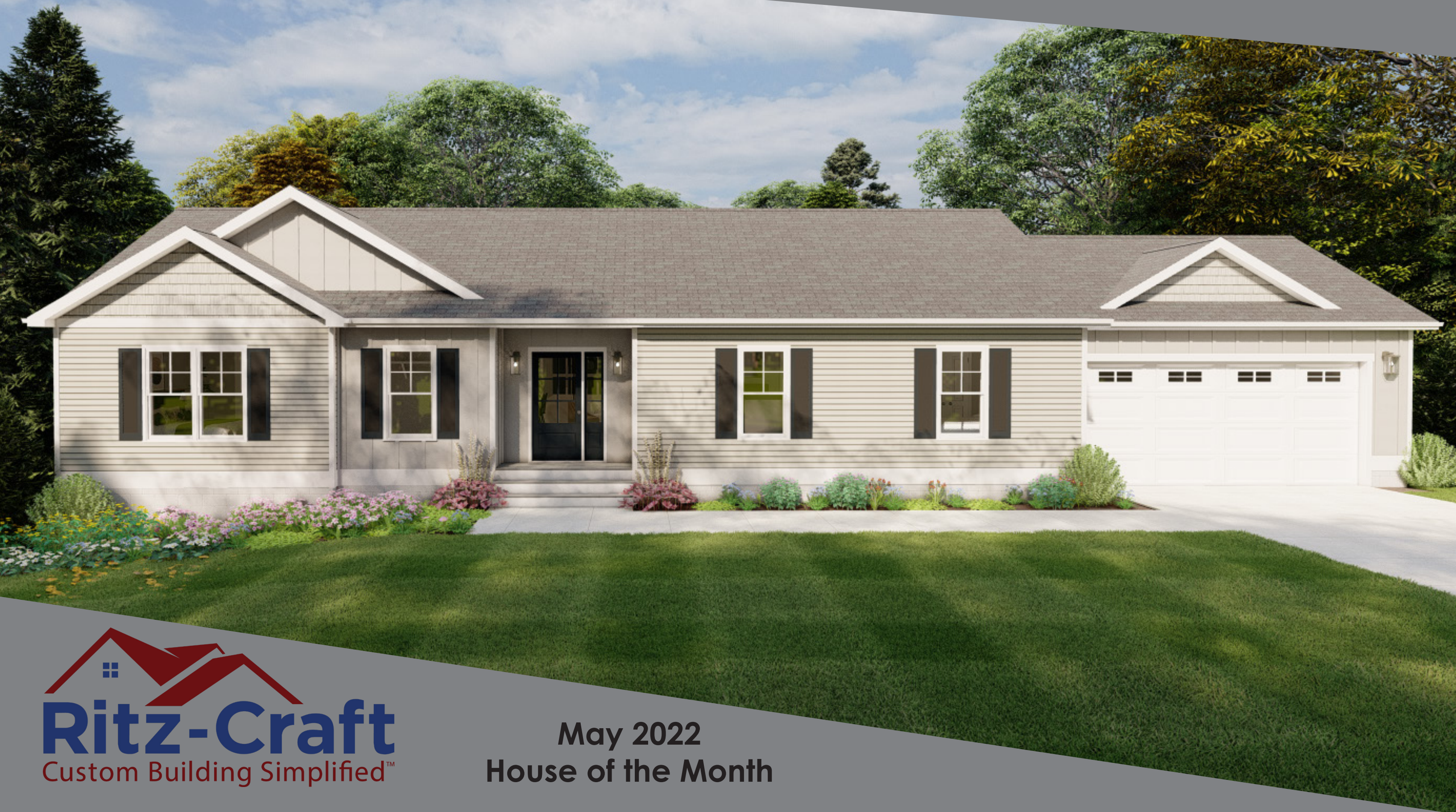


MIRABELLE RANCH




Ritz-Craft
Custom Building Simplified™

May 2022
House of the Month

The “right-sized” 1574 sq. ft. Mirabelle Ranch offers upscale features in an affordable, single-level ranch plan. The large foyer leads to a completely open living-dining-kitchen arrangement--all with rear facing views.

While cooking in the functional galley style kitchen you'll enjoy views of all the main living areas. The convenient island bar is functional and adds casual seating. The Mirabelle's split bedroom layout includes a large utility/garage entry area with laundry cabinets, a custom bench and access to the dual-entry main bath. The master suite has a large walk-in closet and the private bath features a wide double vanity along with a private shower compartment and convenient linen storage.

3 BEDROOMS
2 BATHS

1,574 SQ. FT.



MIRABELLE RANCH

Benchmark Specifications

Special Package Pricing available through November 2022

Please note: Kitchen and bath cabinet configurations as shown are standard in the House of the Month Package.

Upgraded cabinet styles, hardware and finish colors are shown for depiction purposes and not included.

Personal selections for cabinets and hardware to be priced separately. All appliances (other than range hoods shown) are optional.

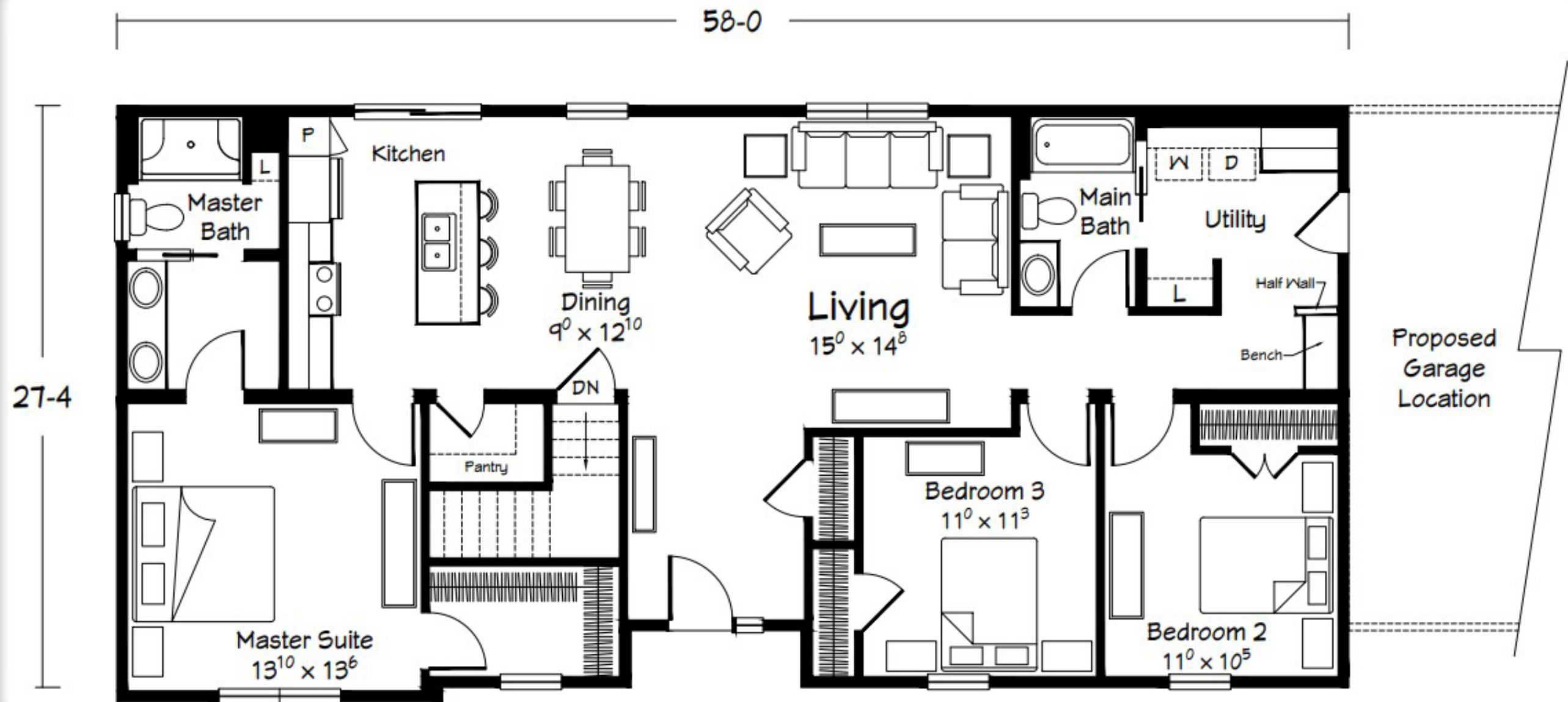


Please Note: Shown with site-built porch & garage

EXTERIOR FEATURES

Included in the House of the
Month Package

- Double gable roof dormer
- 8" front bump-out
- Recessed entry
- 4 over 1 window grids throughout
- (4) pairs of louvered shutters
- RCDA front door with RCSB sidelite (primed--paint optional)
- Fire-rated, 2-panel door at garage entry
- (2) 59016BK front porch lights
- Vinyl board & batten siding for 3-sides of recessed entry, front wall at master closet and for large front gable area PORTSMOUTH vinyl shakes for smaller front gable



- 8'-6" ceiling height throughout (9' option available in many delivery locations)
- SHOAL BAY LVP in Foyer, LR, Dining, Kitchen, Pantry, Master Bedroom, Master Bathroom, Hall and Utility
- 2-panel interior doors with Arts & Crafts trim package
- Pocket doors per plan
- 36" height kitchen wall cabinets
- Tall/Deep refrigerator overhead cabinet with refrigerator end panel
- Prep for site-installed spacesaver microwave (non-vented)--all kitchen appliances are optional
- (2) 78200AP pendant lights over island bar
- (5) recessed ceiling lights in kitchen
- (4) recessed ceiling lights in Dining (replacing chandelier)
- 78200AP light in foyer
- Ventilated wood shelving in master and utility area linen locations
- Utility cabinets per plan with wood shelf over W/D area
- Utility area bench with open shelving and THERMAPLANK back with pegs
- 3' x 5' shower with tiled walls and chrome roller-door in master bath

INTERIOR FEATURES

Included in the House of the
Month Package



KITCHEN



LIVING ROOM



MASTER BEDROOM & BATH

