

ABINGTON CAPE




Ritz-Craft
Custom Building Simplified™

April 2022
House of the Month

The charming Abington Cape's integral front porch will greet you and your guests while providing some relaxing outdoor space. Upon entry, the large, bright foyer offers access to a private home office and adjacent powder room. Stepping past the entry, this great room style plan's living, dining, and kitchen spaces work together as one large family space with great rear-facing views. The large and functional utility room provides access from the garage and is conveniently near the kitchen. The large master bedroom also offers back yard views and includes an exceptionally sized master closet. The master bath includes a full tile, walk-in shower, long double vanity, a linen cubby, privacy compartment and custom bench. Completion of the upper level adds a full bath, two large bedrooms with walk-in closets and spacious loft room.

3 BEDROOMS
2.5 BATHS
OFFICE | LOFT

2,762 SQ. FT.
(INCLUDES 1,102 SQ. FT.
COMPLETED UPPER LEVEL)

85 SQ. FT. COVERED PORCH AREA



ABINGTON CAPE

Benchmark Specifications
Special Package Pricing available through October 2022

Please note: Kitchen and bath cabinet configurations as shown are standard in the House of the Month Package. Upgraded cabinet styles, hardware and finish colors are shown for depiction purposes and not included. Personal selections for cabinets and hardware to be priced separately. All appliances (other than range hoods shown) are optional.

- 9/12 pitch, Tri-Mod roof system
- (2) shed dormers with egress windows
- (3) pairs of louvered shutters
- 4 over 1 window grids throughout
- RCDU front door (primed--paint optional)
- Vinyl board & batten siding for 2-sides of front porch and for dormers
- (1) fixed transom window in master closet
- (1) fixed transom window in master shower
- Fire rated door at garage entry



EXTERIOR FEATURES

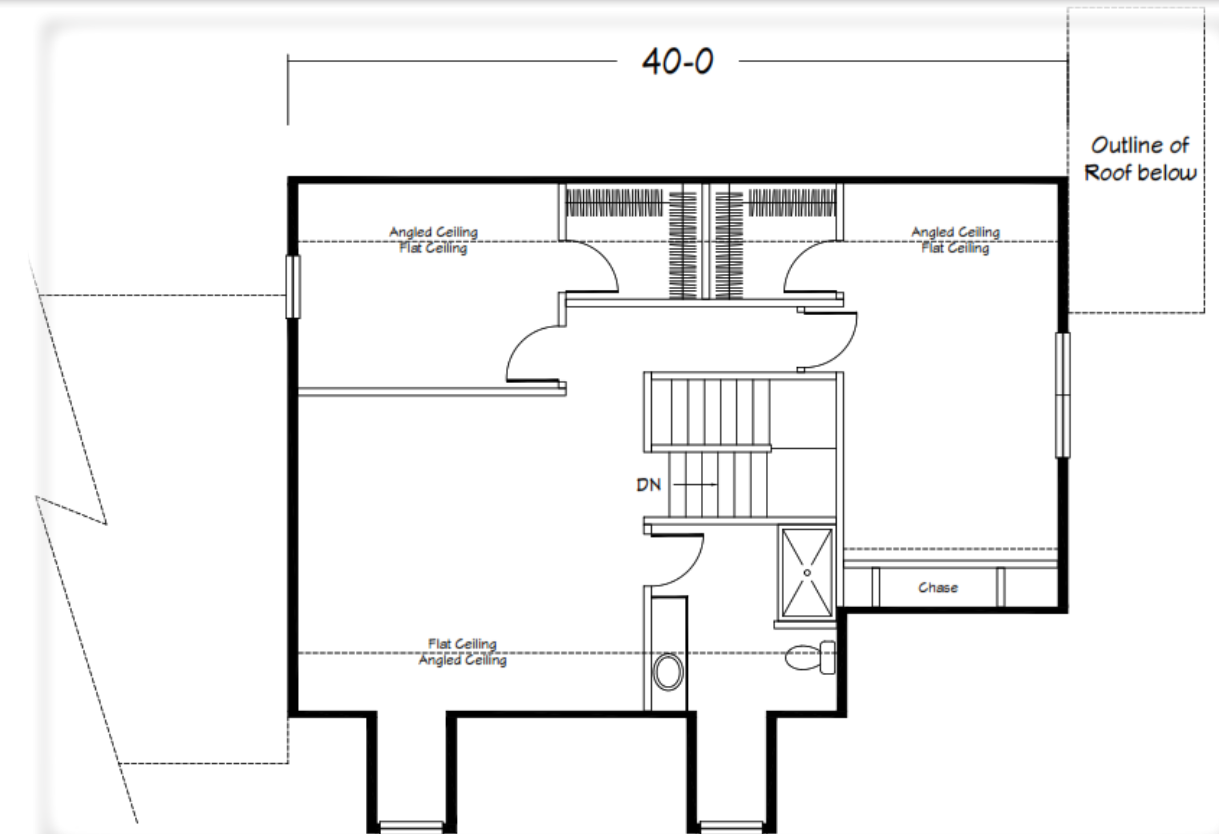
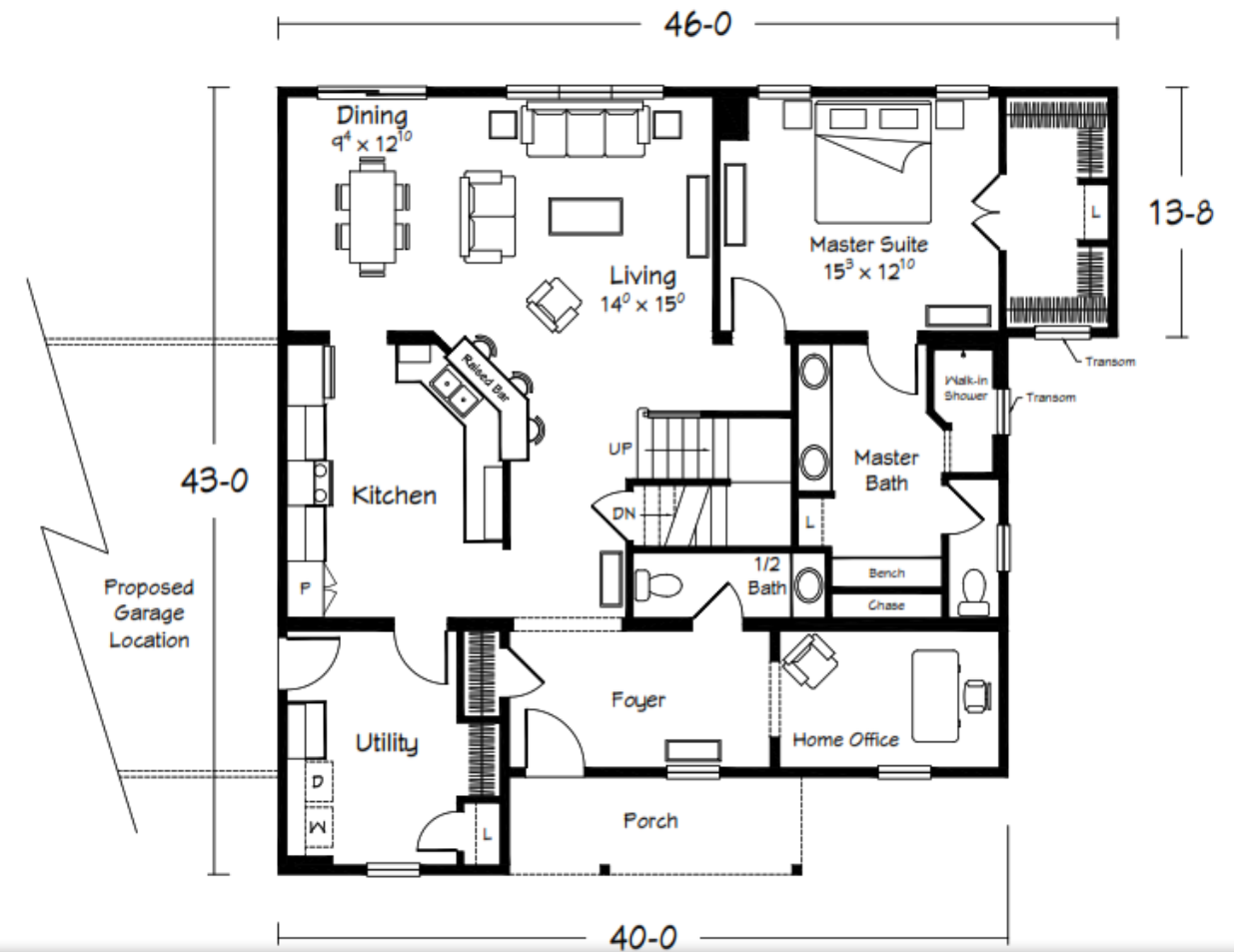
Included in the House of the Month Package

Please Note: Shown with site-built porch and garage

INTERIOR FEATURES

Included in the House of the Month Package

- 8'-6" ceiling height throughout first floor (9' option available in some locations)
- 36" height kitchen wall cabinets
- Extended refrigerator and range overhead cabinets
- Extended pantry cabinet
- Base microwave cabinet and Pot/Pan drawer base
- 4"x 8" stack-stone backsplash
- (5) recessed ceiling lights in kitchen
- (2) 44032 NI hanging pendant lights over kitchen bar
- 2-panel interior doors with Arts & Crafts trim package
- (2) 44036 NI chandeliers--(1) in DR (1) in Foyer
- Tongue and groove shiplap with crown molding installed on ceiling in Foyer
- MOHAWK "Founder's Trace" LVP flooring in Foyer, Office, Half-Bath, Utility, Kitchen, DR, Living Room and Hall
- Full tile, walk-in, "Mini-Infinity" shower in master bath with glass at half walls
- RevoTile flooring in master bath
- Custom, open-shelf bench in master bath
- Ventilated wood shelving in master bath linen area and in Utility
- Base and Wall cabinets per plan in Utility





KITCHEN



LIVING ROOM

MASTER BEDROOM & BATH





FLEX ROOM
