

# FRANKLIN RANCH



  
**Ritz-Craft**  
Custom Building Simplified™

February 2022  
House of the Month



At nearly 2100 sq. ft., the Franklin is an elegant, single-level plan with plenty of space for family gatherings and entertaining.

You'll love the huge "cook's kitchen" with lots of cabinetry, counter space and today's most requested features. The kitchen also offers a large island/dining bar with an open view of the large, rear-facing dining and living spaces. The spacious master suite includes a big walk-in closet and beautifully appointed master bath with privacy compartment, large double vanity and full tile, walk-in shower with fixed glass divider. The Franklin can be built with a front-entry two-car garage on sites that will accept a 64' wide footprint or can include a side entry garage on larger homesites.

**3 BEDROOMS**  
**2 BATHS**

**2,092 SQ. FT.**



## FRANKLIN RANCH

Benchmark Specifications

Special Package Pricing available through August 2022

Please note: Kitchen and bath cabinet configurations as shown are standard in the House of the Month Package.

Upgraded cabinet styles, hardware and finish colors are shown for depiction purposes and not included.

Personal selections for cabinets and hardware to be priced separately. All appliances (other than range hoods shown) are optional.





- Recessed front entry
- 4 over 1 window grids throughout
- RCDU front door with single RCSW sidelite (primed--paint optional)
- (2) 9735BK front entry lights
- Vinyl board & batten siding for front porch area and gable at BR2
- Shingled eave returns at BR2 gable
- (2) pairs of louvered shutters
- Fire-rated door at garage entry



# EXTERIOR FEATURES

Included in the House of the Month Package

---

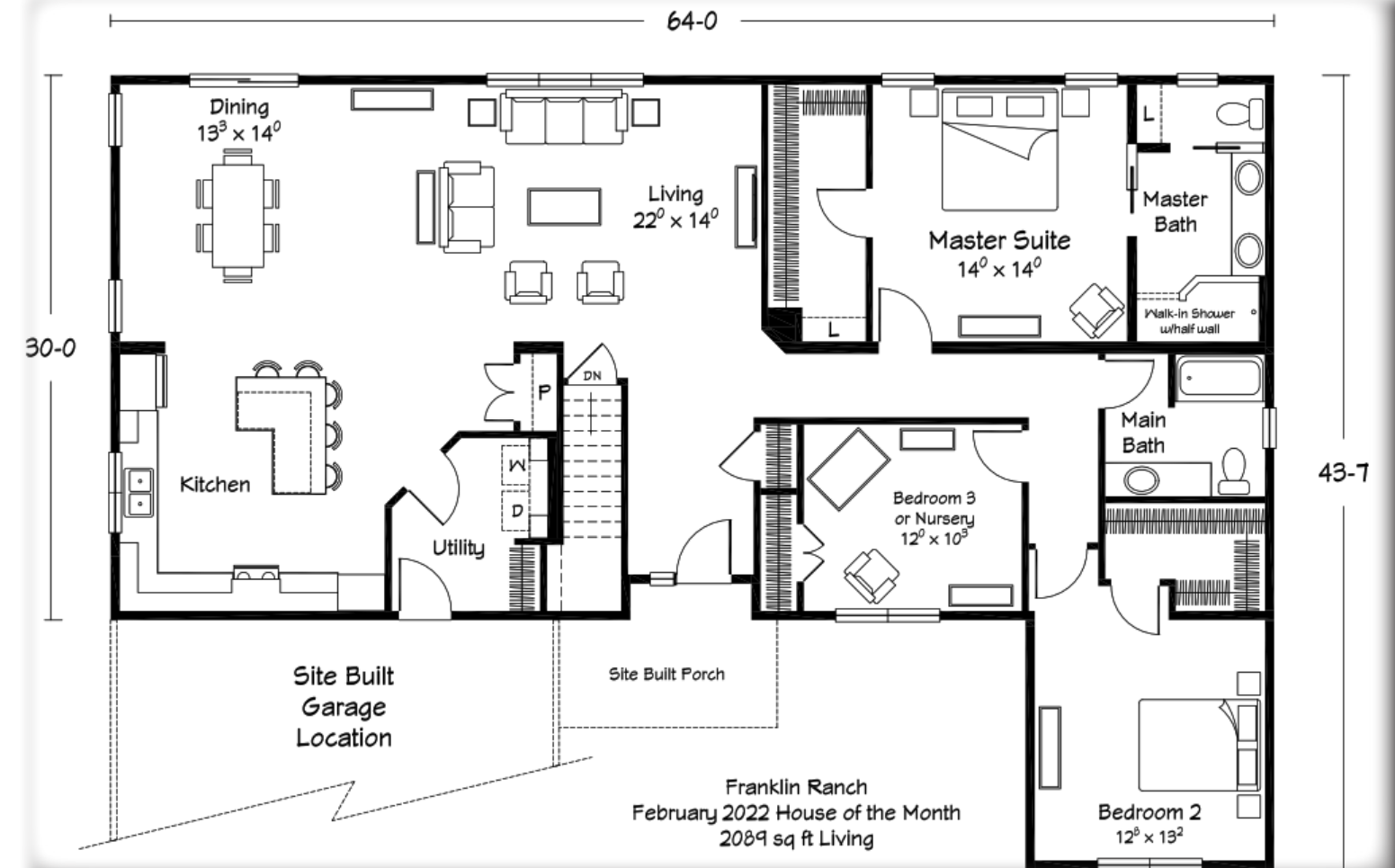
Please Note: Shown with site-built porch and garage



# INTERIOR FEATURES

Included in the House of the Month Package

- 8'-6" ceiling height throughout (9' option available many locations)
- 36" height kitchen wall cabinets
- Tall/Deep refrigerator overhead cabinet
- Tall micro-wave cabinet
- "Edge" single-bowl, stainless steel kitchen sink
- Upgrade range hood
- (1) "Pots & Pans" drawer cabinets
- Polymer Lazy-Susan in corner base cabinet
- (7) recessed ceiling lights in kitchen (includes (1) over sink)
- (2) hanging pendant lights over island/bar
- 4"x12" glass tile backsplash in kitchen
- (2) wall cabinets with wood shelf over W/D
- Ventilated wood shelving in pantry and master bath linen area
- Arts & Crafts interior trim package with 2-panel interior doors
- Pocket doors per print
- (2) antique barrel shelves over toilet area in main and master baths
- Black vanity mirrors in baths
- Full tile, walk-in, "Mini-Infinity" shower in master bath with with clear glass at half wall
- EUREKA LVP flooring in Foyer, Kitchen, Dining, LR, Hall, Main Bath and Master Bath







# KITCHEN

---





# **LIVING ROOM**

---



# MASTER BEDROOM & BATH

---

