

JENNY'S COTTAGE



The charming “Jenny’s Cottage” ranch plan combines great curb appeal with open and functional interior living areas.

This small footprint home can be built with a 2-car garage on homesites that will accept a 60-62’ wide building envelope. The crawl space and full basement versions range from 1459 sf to 1513 sf respectively and offer nice, open living spaces with rear facing views from most rooms. You can choose the standard center kitchen design or the well-appointed, optional end kitchen plan with floor-to-ceiling cabinetry and rustic ceiling beams. Each kitchen includes a large prep/ dining island bar open to the rear facing living room. The bedroom “wing” of the plan offers three bedrooms with a nicely sized master suite with walk-in closet and well-appointed master bath.

**3 BEDROOMS
2 BATHS**

**1459 SQ. FT.
CRAWL SPACE PLAN**

**1513 SQ. FT.
FULL BASEMENT PLAN**



JENNY’S COTTAGE

Benchmark Specifications
Special Package Pricing available through July 2022

Please note: Kitchen and bath cabinet configurations as shown are standard in the House of the Month Package. Upgraded cabinet styles, hardware and finish colors are shown for depiction purposes and not included. Personal selections for cabinets and hardware to be priced separately. All appliances (other than range hoods shown) are optional.



EXTERIOR FEATURES

Included in the House of the Month Package

- Combination 12/12 and 6/12 roof pitches
- Front bump-out with panelized gable roof cap
- Picture window with 3.5"/4.5" Azek or equal trim
- Full width shingled eave return at front 12/12 gable
- 3 Over 1 window grids throughout (black windows shown are optional--not included in package price)
- Vinyl board & batten siding at front and right-side wall of BR2, at front porch area and 3-sides of bump-out
- 9 1/4" sill trim boards (Azek or equal) at board & batten sided areas
- 5.5" Azek or equal trim board between board & batten siding and shake siding at bump-out
- RCDT front door with (1) RCSJ sidelite (primed--paint optional)
- RCDF rear door (LR) (primed--paint optional)
- (1) pair of board & batten shutters
- Vinyl "Portsmouth" shakes for front gables
- 16"x 30" decorative gable vent (Fypon or equal)

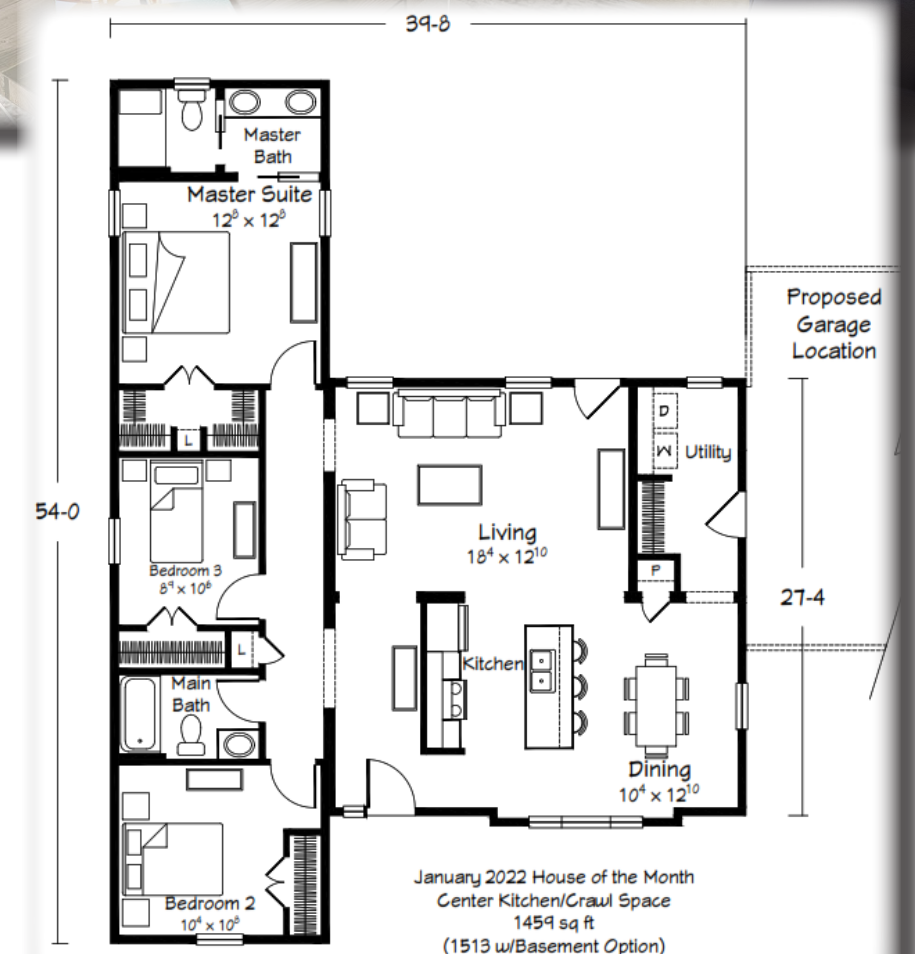
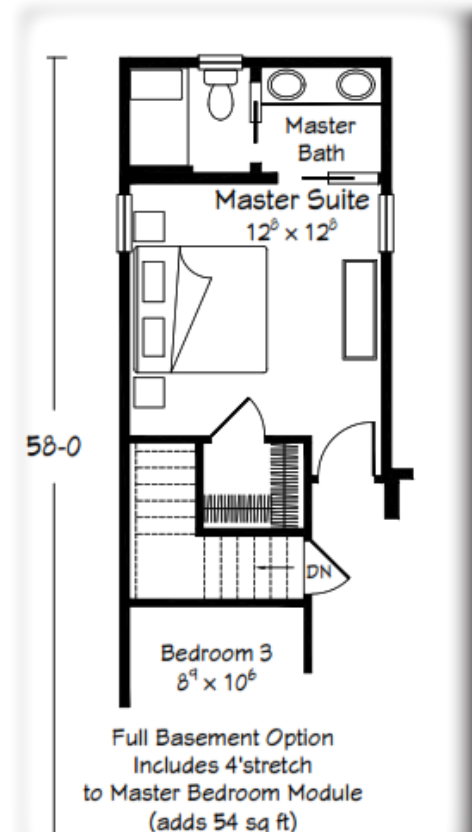


Please Note: Shown with site-built porch and garage

INTERIOR FEATURES

Included in the House of the Month Package

- 8'-6" ceiling height throughout (9' option available in most areas)
- 2-panel interior doors with Arts & Crafts trim package
- Pocket Doors as shown
- 36" height kitchen wall cabinets
- Tall/Deep refrigerator overhead cabinet
- (2) 43852NBR lights over island
- 43095NBR light in DR
- Ventilated wood shelving in Pantry and over W/D
- MOWHAWK "Founders Trace" LVP flooring in Foyer, Kitchen, Dining, Living Room and Utility
- CONGOLEUM "Lux" vinyl flooring in Main Bath
- RevoTile flooring in Master Bath
- Seated Shower with DUMAWALL surround and chrome, slide-by roller door
- HANSTONE vanity top in Master Bath (Group 1)
- CAMBRIA counter tops in kitchen
- Glass tile backsplash in kitchen (4" x 12" tiles)

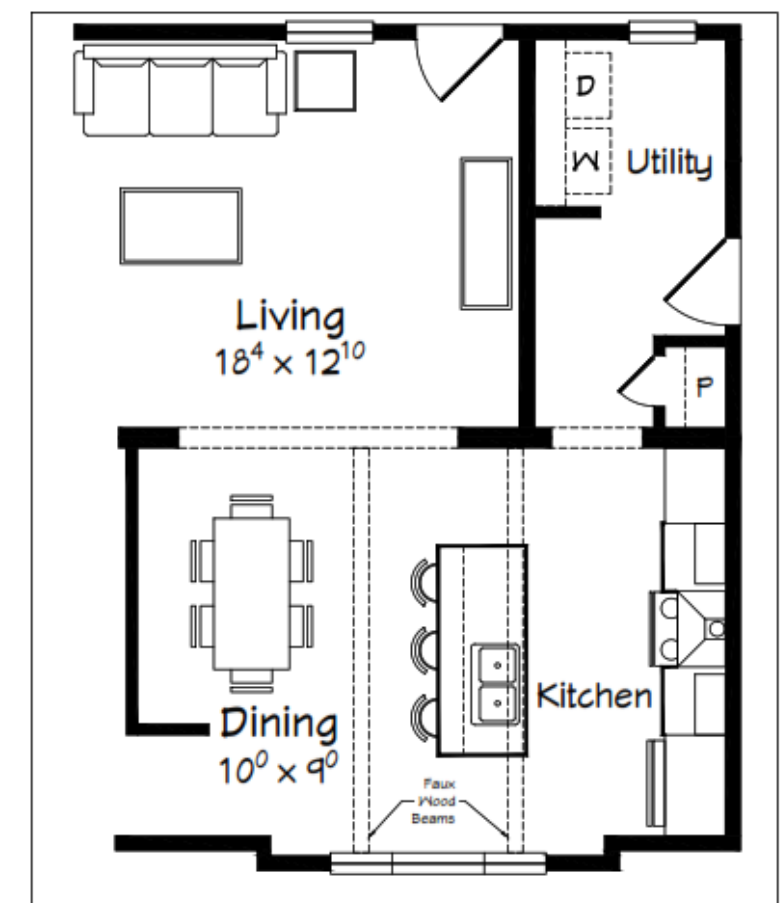




STANDARD KITCHEN



OPTIONAL KITCHEN



January 2022 House of the Month
Optional End Kitchen/Crawl Space
1459 sq ft
(1513 w/Basement Option)

MASTER BEDROOM & BATH

