
DECEMBER 2021

HOUSE OF THE MONTH

Special Package pricing
available through
June 2022



Shown with site-built porch & garage

DIAMOND HILL TWO STORY

Benchmark Specifications

3 Bedrooms / 2.5 Baths / Loft-Home Office
2,677 Sq. Ft. / 265 Sq. Ft. Bonus Area

DIAMOND HILL TWO STORY

Benchmark Specifications

HOUSE OF THE MONTH

House Description



Your family and guests will love the open floor plan of the Diamond Hill. The large, centrally located foyer provides access to all first floor living areas as well as the upper level via the elegant staircase. The large, bright kitchen with custom cabinetry and large prep/dining island has open views of the living and dining areas.

The spacious, first-floor master bedroom includes a great walk-in closet and master bath with double vanity, separate dressing/makeup area and full tile, walk-in "Infinity Shower". The upper level includes two bedrooms, large bath, family-sized loft room and a nice, front facing alcove for a home office space. The bonus area can be site-finished as a fourth bedroom, craft room or second home office.



DIAMOND HILL TWO STORY

Benchmark Specifications

HOUSE OF THE MONTH

**Exterior Features
included in the House
of the Month Package**



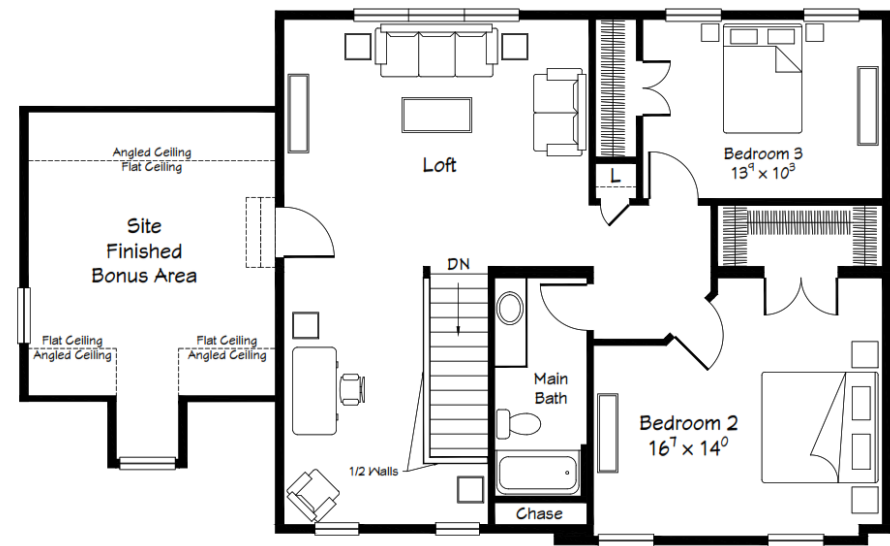
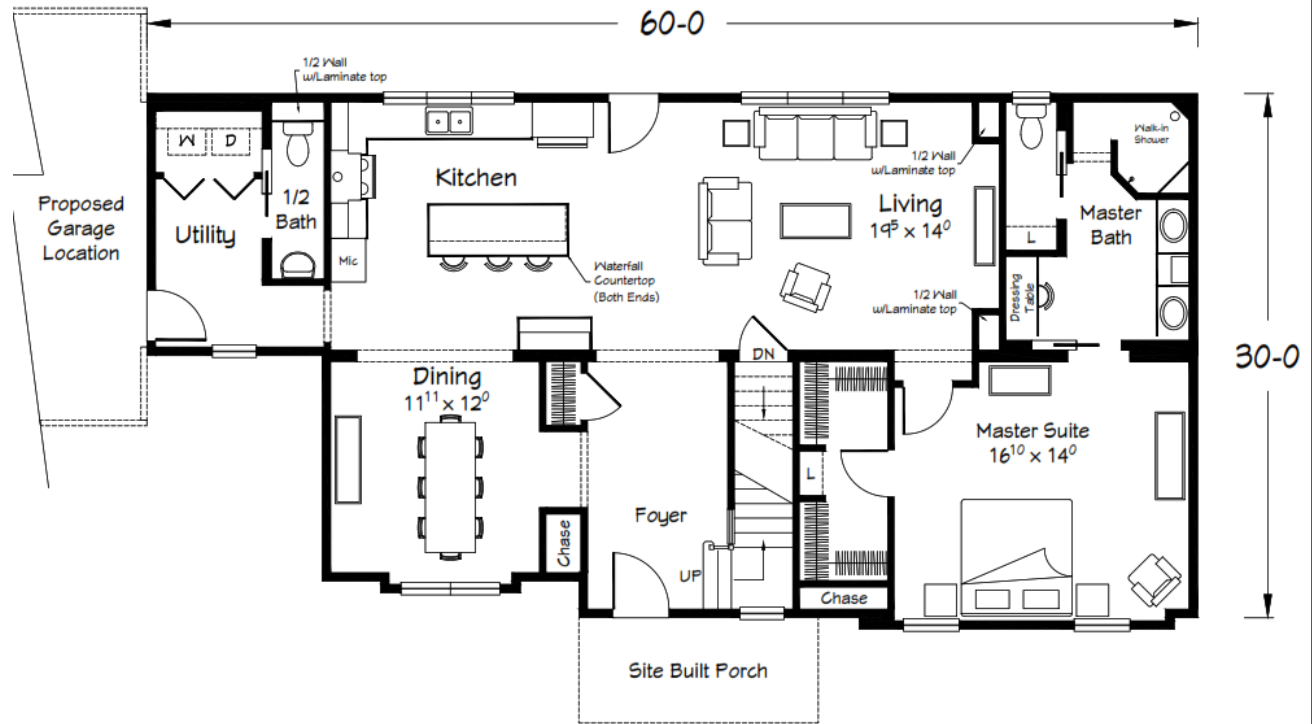
- 6 over 1 window grids throughout
- (7) pairs of paneled shutters
- RCDZ front door (primed--paint optional)
- RCDV rear door 10-lite
- Fire-rated door at garage entry
- Vinyl board & batten siding for front porch shed dormer and dining window bump-out areas
- Shed dormer with egress window
- Front bump-out at master bedroom/bedroom two with gable roof



DIAMOND HILL TWO STORY Benchmark Specifications

HOUSE OF THE MONTH

Interior Floor Plan



DIAMOND HILL TWO STORY

Benchmark Specifications

HOUSE OF THE MONTH

**Interior Features
included in the House
of the Month package**



- 8'-6" ceiling height throughout first floor (9' option available in many locations)
- Tall/Deep refrigerator overhead cabinet with full depth side panels
- Tall Microwave Cabinet
- (5) recessed ceiling lights in kitchen (includes 1 over sink)
- 2-piece layered cabinet crown in Kitchen
- 36" Flat Shiplap Wood Hood
- Contemporary kitchen cabinet hardware
- Quartz waterfall island countertop
- 2-panel interior doors with Bungalow trim package
- Raw Oak treads with white riser material for stairs (shipped loose- 2 1/4 x 3/4 landing flooring)
- White "kickboards" at stairs
- "Prairie" stair railing
- Antique Craft Laminate flooring for Utility, 1/2 Bath, Kitchen, LR, DR & Foyer
- AMERICAN STANDARD "Boulevard" pedestal sink in 1/2 Bath
- Novik Drystack Stone on wall behind pedestal sink
- Novik Drystack Stone on LR accent wall
- Revo Tile flooring in Master Bath
- Pocket doors per plan
- (3) LED mirrors in Master Bath
- Custom style bath vanity cabinets with open shelf cabinet in Master Bath
- Ventilated wood linen shelving in Master bath
- Full tile, walk-in "Infinity Shower" in Master Bath with seat and double shower heads



DIAMOND HILL TWO STORY

Benchmark Specifications

HOUSE OF THE MONTH

Interior
Images

