
NOVEMBER 2021

HOUSE OF THE MONTH

Special Package pricing
available through
April 2022



*Integral porch roof included--porch framing, decking materials and required support posts not included and to be completed on site by builder.

NEWPORT II RANCH

Benchmark Specifications

3 Bedrooms / 2 Baths

2,029 Sq. Ft.

(262 Sq. Ft. Integral Porch area)

NEWPORT II RANCH

Benchmark Specifications

HOUSE OF THE MONTH

House Description



Shown with site-built porch and garage

Great curb appeal coupled with an open floor plan and today's favorite features make the Newport II Ranch an excellent choice for those seeking a well designed, single-level plan.

The wide and welcoming front porch area adds charm and nice, front facing outdoor space. Upon entry, you'll have an open view of the large living room and adjacent kitchen and dining spaces. The kitchen features tall, custom cabinetry with a tower range hood, walk-in pantry and beautiful, custom designed island/bar. Bedroom three in this plan is ideally located for use as an occasional guest room or as a private, home office space. The rear-facing, master suite includes a large bath with long double vanity and full tile, walk-in shower with seat and dual shower heads. You'll love the double master walk-in closet arrangement with a nicely located dressing/make-up vanity. Open, single-level living, charming curb appeal and premium interior features make the Newport II a great plan for empty nesters and those seeking work-at-home space.

NEWPORT II RANCH

Benchmark Specifications

HOUSE OF THE MONTH

Exterior Features
included in the House
of the Month Package



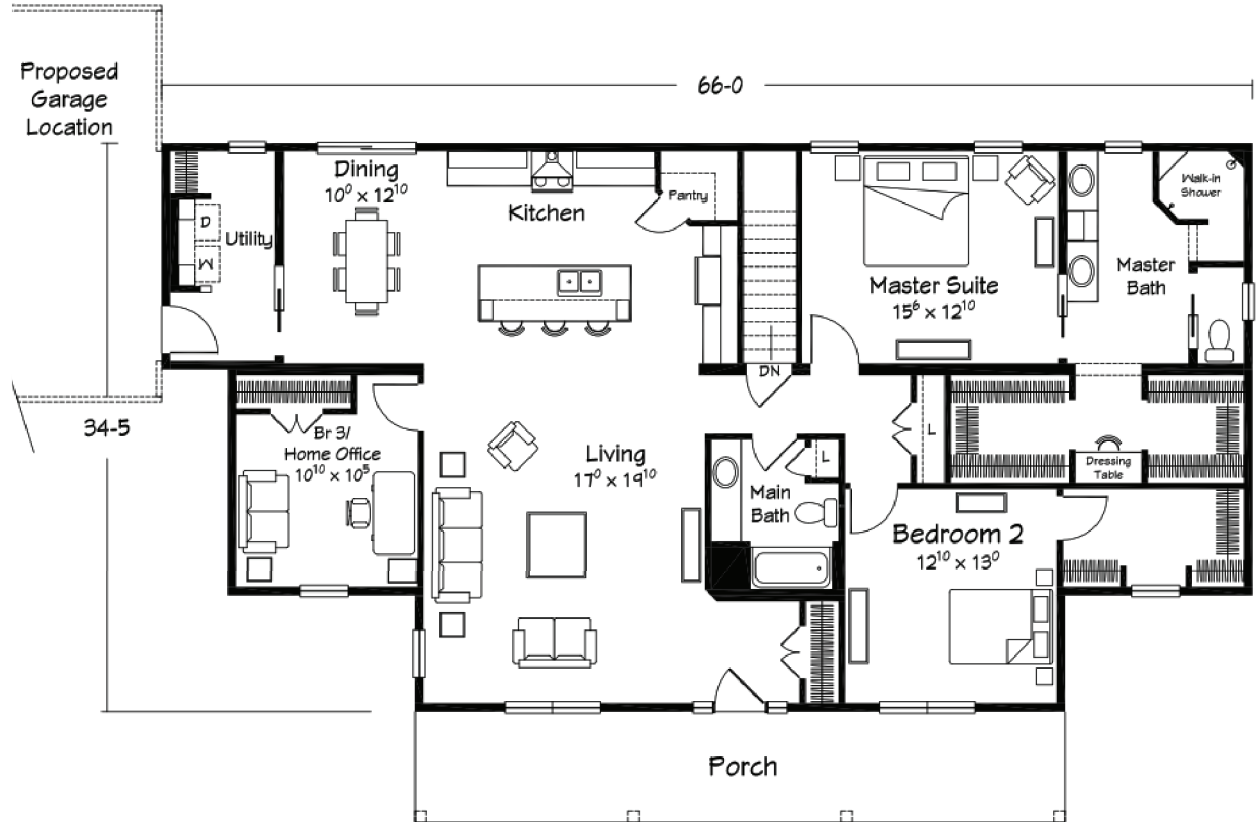
- 3 over 1 window grids throughout
- 5' 2" tall LR and BR windows
- (4) pairs of louvered shutters
- (1) additional front porch light
- RCDT front door with (2) RCSJ sidelites (primed--paint optional)
- Vinyl board & batten siding for front porch area
- Panelized roof dormer with Northwoods Shakes
- 32" x 18" decorative "Eyebrow Vent" for front dormer (FYPON or similar)
- Fire rated door at garage entry

NEWPORT II RANCH

Benchmark Specifications

HOUSE OF THE MONTH

Interior Floor Plan



NEWPORT II RANCH

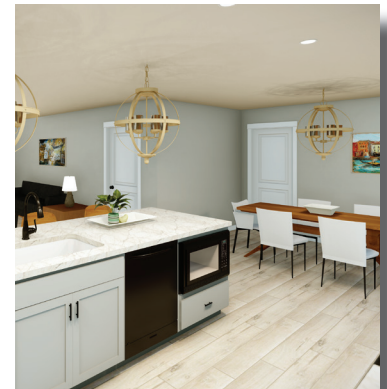
Benchmark Specifications

HOUSE OF THE MONTH

**Interior Features
included in the House
of the Month package**



- 8'-6" ceiling height throughout (9' option available most areas)
- 2-panel interior doors with Arts & Crafts trim package
- Pocket doors per plan
- (5) recessed ceiling lights in kitchen
- 5-light sphere fixture in foyer, dining and over island (410cf219888)
- Tower range hood (choice of black or stainless steel)
- Tall kitchen wall cabinets and custom design island (refer to print for full details)
- Wood pantry shelving
- Contemporary cabinet pulls throughout
- (2) 24"x 36" LED mirrors in Master Bath
- (2) white, "square-vessel" lav sinks with nickel faucets in master bath
- Full tile, walk-in "Infinity" shower in Master Bath
- REVO-TILE flooring in Master Bath
- Custom style vanity with open shelf storage cabinet in Master Bath
- Dressing/make-up area with 24"x36" LED mirror in Master closet area
- Ventilated wood closet shelving in Master closets
- FOUNDER'S TRACE LVP flooring in Foyer, LR, Hall, Main Bath, Kitchen, Dining and Utility Room
- Wall cabinets with wood shelf over washer/dryer area



NEWPORT II RANCH

Benchmark Specifications

HOUSE OF THE MONTH

Interior
Images


Ritz-Craft
Custom Building Simplified™

