

---

# OCTOBER 2021

---

## HOUSE OF THE MONTH

Special Package pricing  
available through  
April 2022



## OLD TOWNE CAPE

Benchmark Specifications

3 Bedrooms / 2.5 Baths / Loft

2,470 Sq. Ft

*(Includes 910 Sq. Ft. Upper-Level area)*

---

## OLD TOWNE CAPE

### Benchmark Specifications

---

# HOUSE OF THE MONTH

## House Description



The Old Towne Cape's traditional exterior will charm any neighborhood while the plan's open and modern interior layout provides today's most sought-after design elements.

An elegant foyer and staircase greet you upon entry and lead you to the wide open, living and dining spaces. The gourmet style cook's kitchen features a huge island/bar with counter-to-ceiling wall cabinetry, a wood chimney-style range hood and bright cheery countertop prep space illuminated by the triple window. The kitchen, living and dining rooms work together like one connected, open space making the plan perfect for large family gatherings and for entertaining.

The beautiful master suite includes a massive walk-in closet and the ensuite bath features a full tile, walk-in "Infinity Shower", double vanity and separate dressing/makeup area. The upper level can be custom finished to include two large bedrooms, additional full bath, storage and large loft room.



---

## OLD TOWNE CAPE

Benchmark Specifications

---

# HOUSE OF THE MONTH

**Exterior Features  
included in the House  
of the Month Package**



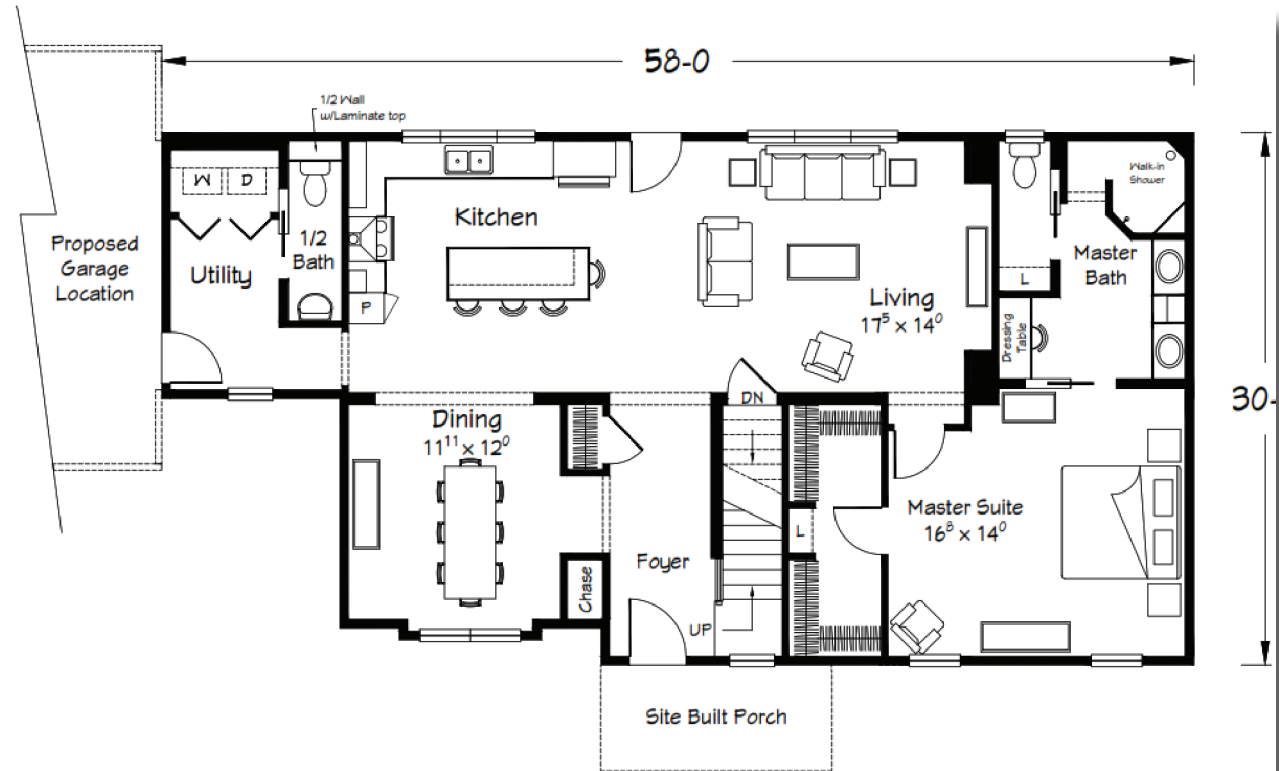
- (3) shed dormers with egress windows
- 4 over 1 window grids throughout
- 5'-2" tall windows in MBR, LR and DR
- (4) pairs of louvered shutters
- 8" deep "bump-out" at DR twin window area
- RCDA front door (primed--paint optional)
- RCDV rear door (primed)
- Fire-rated door at garage entry
- Vinyl "Portsmouth Shakes" for (3) shed dormers
- Vinyl board and batten siding for porch area and (3) sides of bump-out
- 1x10 AZEK (or equal) for sill board at (3) sides of bump-out
- white vinyl corner posts (IPO matching color)

# OLD TOWNE CAPE

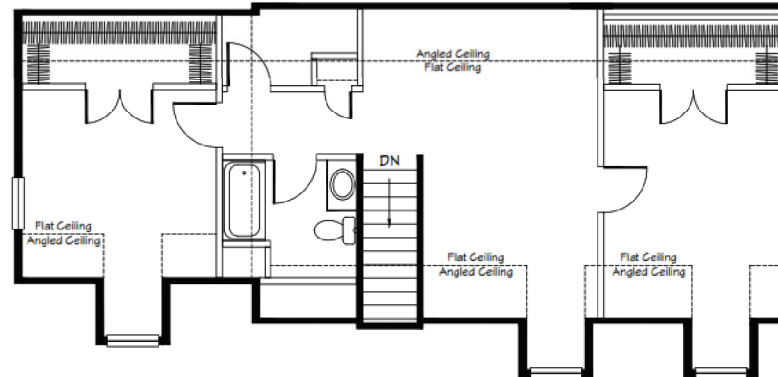
Benchmark Specifications

## HOUSE OF THE MONTH

### Interior Floor Plan



Old Towne Cape  
October 2021 HOM  
1560 sq ft 1st Floor  
910 sq ft proposed upper level



---

## OLD TOWNE CAPE

### Benchmark Specifications

---

# HOUSE OF THE MONTH

**Interior Features  
included in the House  
of the Month package**



- 8'-6" ceiling height throughout first floor (9' option available in many locations)
- Tall/Deep refrigerator overhead cabinet with full depth side panels
- Tall Pantry Cabinet
- (5) recessed ceiling lights in kitchen (includes 1 over sink)
- Hanging pendant light over island
- 2-piece layered cabinet crown in Kitchen
- 36" wood-chimney range hood
- (3) 3-drawer, tall wall cabinets in Kitchen with glass doors
- Contemporary kitchen cabinet hardware
- 2-panel interior doors with Arts & Crafts trim package
- Raw Oak treads with white riser material for stairs (shipped loose- 2 1/4 x 3/4 landing flooring)
- White "kickboards" at stairs
- "Prairie" stair railing
- KARDEAN LVP flooring for Utility, 1/2 Bath, Kitchen, LR, DR and Foyer
- AMERICAN STANDARD "Boulevard" pedestal sink in 1/2 Bath
- DuraGroove barnwood on wall behind pedestal sink
- DuraGroove barnwood ceiling accent on DR ceiling
- "Wanderers Loop" LVT flooring in Master Bath
- Pocket doors per plan
- Custom style bath vanity cabinets with open shelf cabinet in Master Bath
- Ventilated wood linen shelving in Master bath
- Full tile, walk-in "Infinity Shower" in Master Bath with seat and double shower heads





---

# OLD TOWNE CAPE

Benchmark Specifications

---

## HOUSE OF THE MONTH

Interior  
Images



\*\*Appliances shown are optional