

---

# SEPTEMBER 2021

---

## HOUSE OF THE MONTH

Special Package pricing  
available through  
March 2022



## STEEPLECHASE I & II RANCH PLANS

Homestead Series

---

3 Bedrooms / 2 Baths

*Steeplechase I: 27'4" x 58' -- 1,591 sq.ft. Living*  
*Steeplechase II: 30' x 58' -- 1,740 sq. ft. Living*

---

## STEEPLECHASE I & II RANCH PLANS Homestead Series

---

# HOUSE OF THE MONTH

### House Description

The Steeplechase I & II ranch plans are designed for maximum style and affordability. The features included in the House of the Month package put value at the forefront by including the most popular “value-packaged” features for these plans.

The interior plan is wide open and family sized. Upon stepping from the foyer, you’ll be greeted by a wide view of the large living, dining and kitchen spaces. The kitchen features an island bar with sink, lots of counter space and seating for 4. The nearby utility room allows access to the garage location and features custom cabinetry with utility sink and a conveniently located drop-zone bar with charging ports. All bedrooms include large walk-in closets and the master suite’s private bath includes a large double vanity and compartmented shower.



Shown with site-built porch and garage



---

# STEEPLECHASE I & II RANCH PLANS

Homestead Series

---

## HOUSE OF THE MONTH

Exterior Features  
included in the House  
of the Month Package



- NEW! Homestead "First Impression Package" includes LR Picture Window, 6-Panel or 2-Panel front door and 1x3/1x4 Azek (or equal) trim boards around door and window
- 4 over 1 window grids throughout (LR picture window fixed glass does not get grids)
- (2) pairs of louvered shutters
- Vinyl Board & Batten siding in front porch area



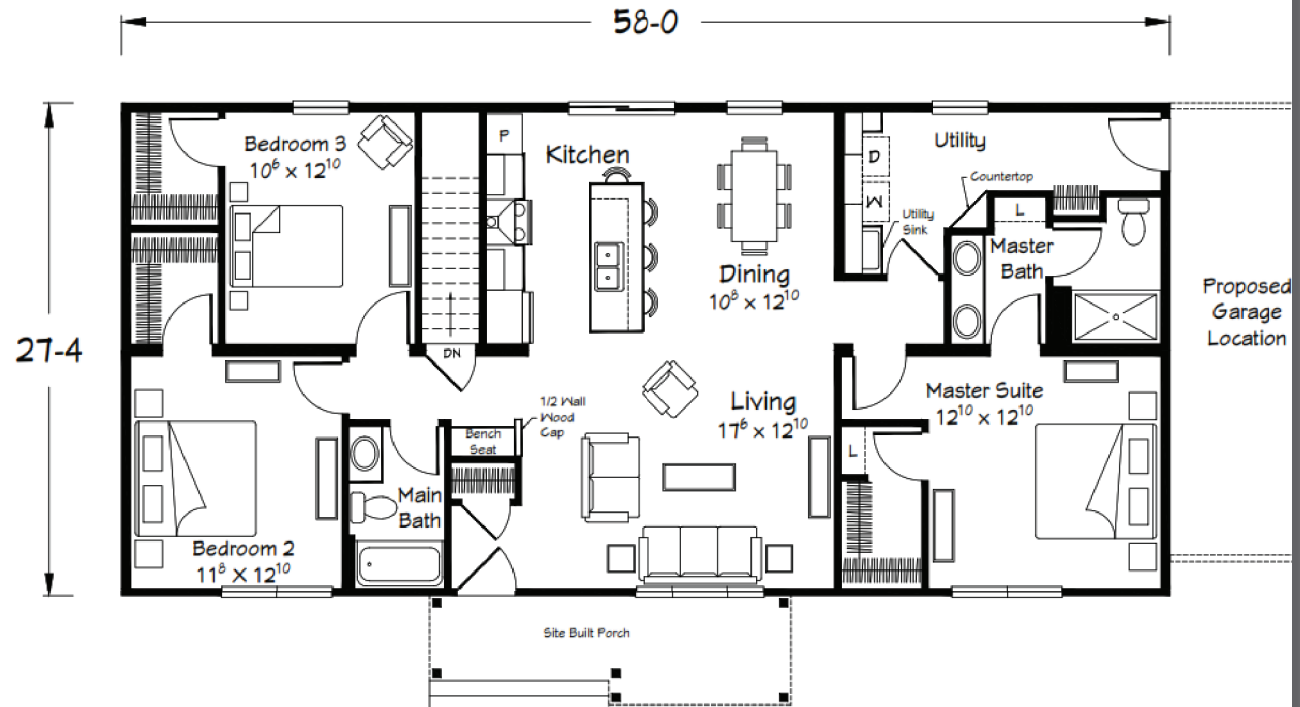
Shown with site-built porch and garage



# STEEPLECHASE I & II RANCH PLANS Homestead Series

## HOUSE OF THE MONTH

Floor Plan  
*Steeplechase I*  
27'4" x 58'  
1,591 sq.ft. Living

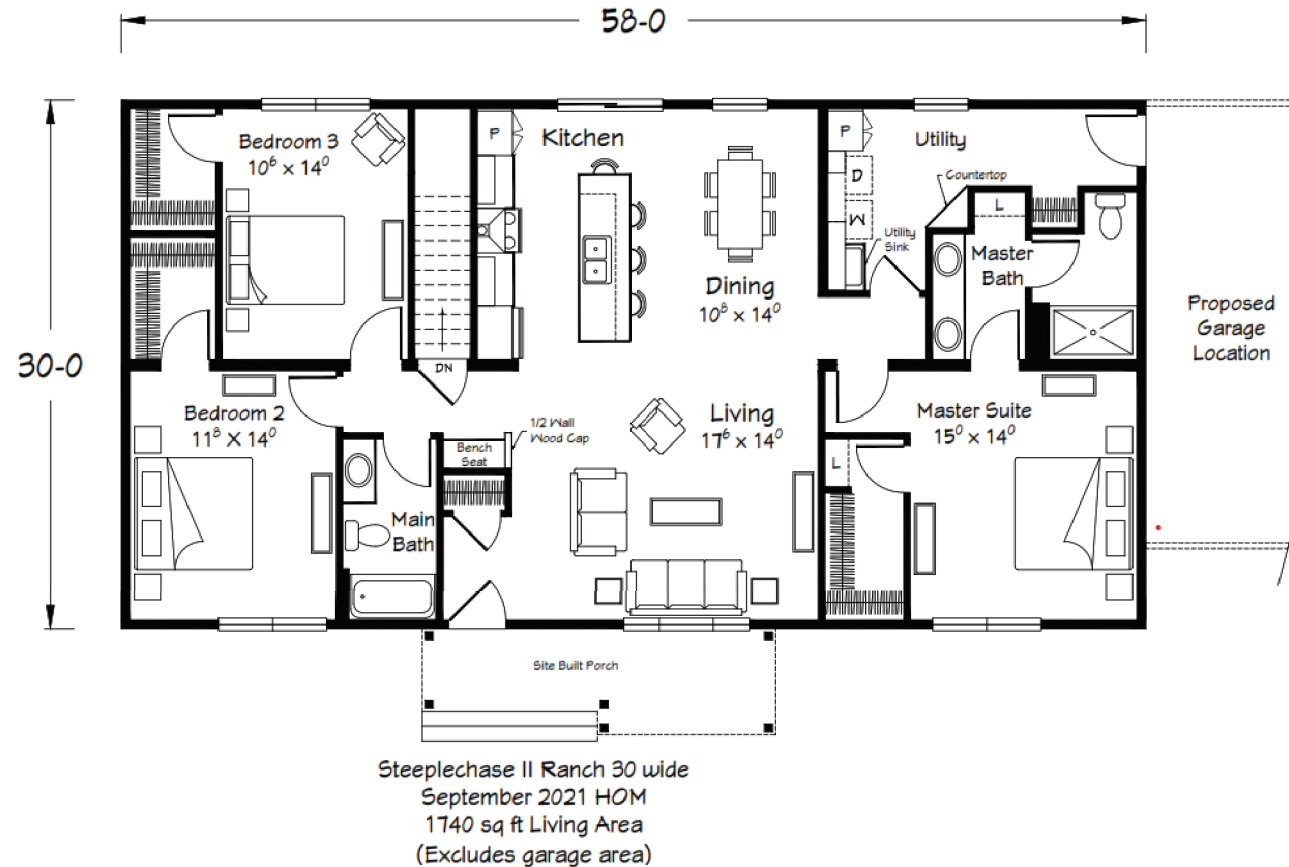


Steeplechase I Ranch 28 wide  
September 2021 HOM  
1591 sq ft Living Area  
(Excludes garage area)

# STEEPLECHASE I & II RANCH PLANS Homestead Series

## HOUSE OF THE MONTH

Floor Plan  
*Steeplechase II*  
30' x 58'  
1,740 sq.ft. Living



---

## STEEPLECHASE I & II RANCH PLANS Homestead Series

---

# HOUSE OF THE MONTH

**Interior Features  
included in the House  
of the Month package**



- 8' 6" ceiling height throughout
- Tall Pantry cabinet in Kitchen
- Tall/Deep refrigerator overhead cabinet
- Custom, tall wall cabinets with open shelf cab. at top
- St. St. Chimney range hood
- Base microwave cabinet in island/bar
- (4) recessed ceiling lights in Kitchen
- (2) hanging pendant lights over island/bar Kichler 52235NI
- Custom cabinetry with wood shelf/rod and utility sink at Laundry area (per print)
- "Drop-Zone" angled countertop in Utility with (1) receptacle/USB charging receptacle
- Fire-rated door at garage entry (in Utility)
- 3' x 5' shower with "Duma-Wall" wall panels and chrome, slide-by roller door in Master Bath
- Round, black framed mirrors in baths (\*\*PA will have (2) 24"x36" Black Rectangular Metal Mirrors in Master, Main Bath 30" Black Round Metal Mirror. MI will use all 24" Black Round Mirrors.)
- Legacy edge-banded linen shelving in Master Bath
- (2) 12" x 24" Edge-Banded w/ Black Peg Supports shelves above toilet in each bath
- 2-panel white interior doors with Arts & Crafts trim package
- Bench seat with open-storage cabinets, Rolled Edge Laminate Top, half wall with white wood cap and white Shiplap Backrest
- Eureka LVP flooring in Foyer, LR, Kitchen/Dining and Hall areas





---

# STEEPLECHASE I & II RANCH PLANS

Homestead Series

---

## HOUSE OF THE MONTH

Interior  
Images

