
AUGUST 2021

HOUSE OF THE MONTH

Special Package pricing
available through
February 2022



AUGUSTA CAPE

Benchmark Specifications

3 Bedrooms / 2.5 Baths / Loft

2,766 Sq. Ft. Living Area

(total living includes 1,138 Sq. Ft. site finished upper level)

AUGUSTA CAPE

Benchmark Specifications

HOUSE OF THE MONTH

House Description



Its welcoming curb appeal, balanced front elevation and classic style makes the Augusta a real neighborhood charmer. This family-sized Cape Cod home features a recessed front entry door that leads to a large, center-hall style foyer with access to all living areas. A rear facing living room is big enough for lots of seating and is open to the kitchen and patio access door.

The Augusta's fabulous kitchen includes loads of countertop workspace and a long, island/bar for casual dining and family mingling. For larger sit-down dining, the front facing dining room is big enough for all and features warm "faux-wood" ceiling beams. The secluded first floor master bedroom includes an en-suite bath/walk-in closet with custom cabinetry, ventilated wood closet shelving and full tile walk-in shower. The upper level can be finished to include an additional full bath, two large bedrooms and large loft room. The Augusta can be the perfect plan for those seeking large home features and Cape Cod style and charm.



AUGUSTA CAPE

Benchmark Specifications

HOUSE OF THE MONTH

Exterior Features

- (4) 4'-8" wide front Cape Cod dormers with egress windows
- 4 over 1 window grids throughout
- (5) pairs of louvered shutters
- RCDU front door with (2) RCSL sidelites (primed--paint optional)
- Vinyl Board & Batten siding for front porch area

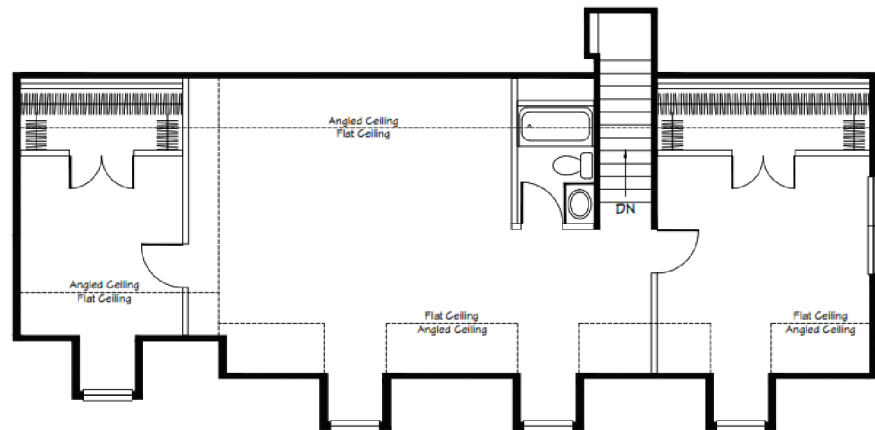
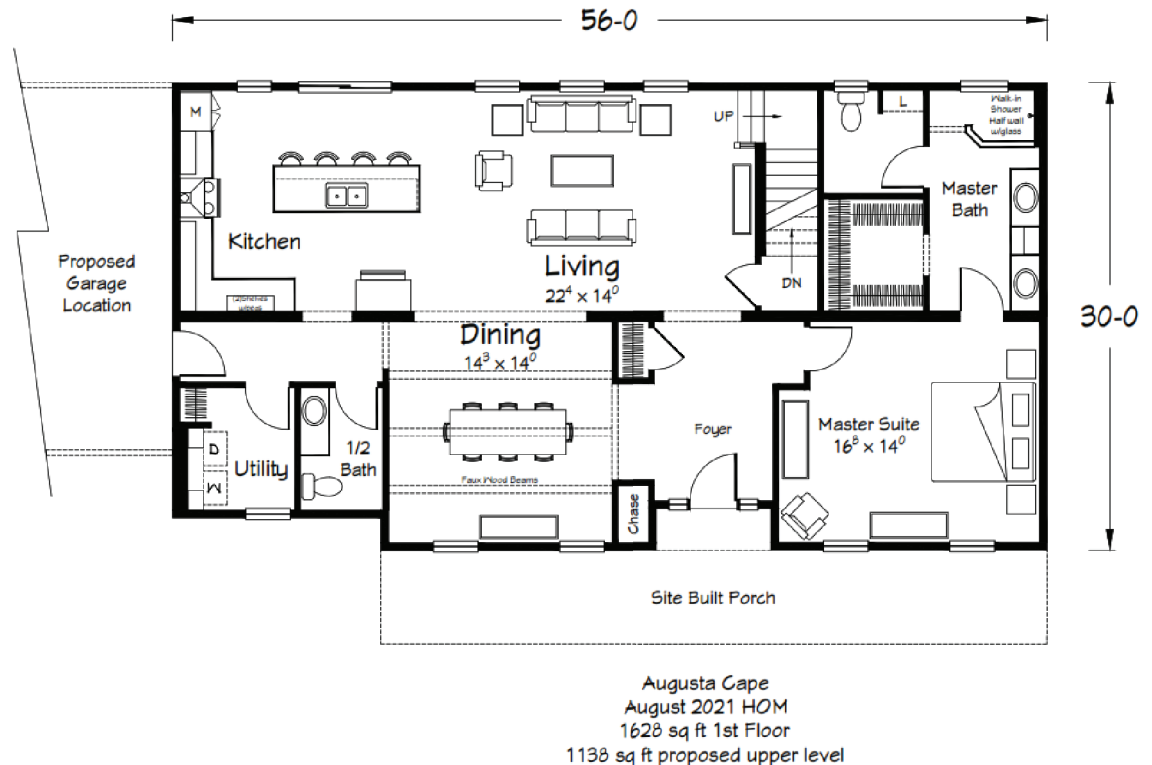


AUGUSTA CAPE

Benchmark Specifications

HOUSE OF THE MONTH

Interior Floor Plan



AUGUSTA CAPE

Benchmark Specifications

HOUSE OF THE MONTH

Interior Features

- 8'-6" ceiling height throughout first floor (9' option available most areas)
- 36" height kitchen wall cabinets
- (5) recessed ceiling lights in kitchen
- Tall/Deep refrigerator overhead cabinet with (2) deep refrigerator end panels
- Tall/Deep microwave/pantry cabinet (TOM 3090B)
- (2) 36" banded shelves with black pegs in kitchen per print
- (2) KICHLER 45910BK Winslow sconce lights over kitchen shelves
- 30" wood "chimney" range hood
- (2) 3-drawer "pots & pans drawer cabinets"
- Decorative "X-Panels" at each end of the island/bar
- HANSTONE (group 2) quartz island/bar top with black composite single-bowl farm sink
- (2) KICHLER 44035BK Winslow chandeliers--1 over island/bar--1 in DR
- (3) Faux-Wood ceiling beams in DR
- 2-panel, smooth interior doors with Arts & Crafts trim package
- "Prairie" stair railing
- Full tile "Mini-Infinity" walk-in shower with glass panels in master bath
- Custom master bath vanity cabinets with drawer bank and open-shelf storage cabinet
- (3) ventilated wood shelves in master bath linen cubby and master closet
- MOHAWK "Wanderers Loop" LVT in master bath and master closet
- MOWHAWK "Antique Craft" LVP flooring in Kitchen, Living Room, Foyer, Dining Room and Hall (from DR to Garage entry)



*optional appliances shown

AUGUSTA CAPE

Benchmark Specifications

HOUSE OF THE MONTH

Interior
Images



*optional appliances shown




Ritz-Craft
Custom Building Simplified™