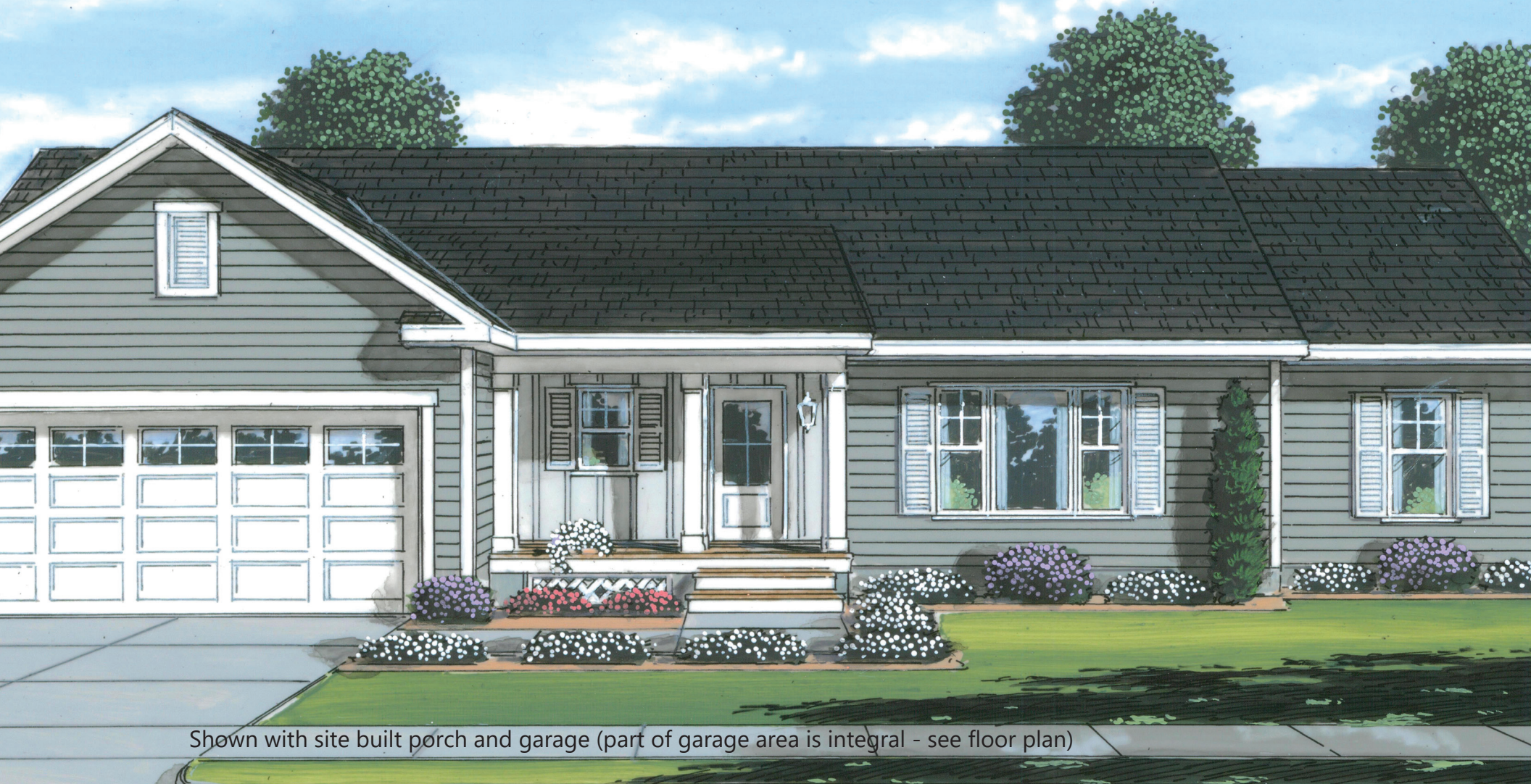


JUNE 2021 HOUSE OF THE MONTH

Special Package Pricing Available through December 2021



Shown with site built porch and garage (part of garage area is integral - see floor plan)

American Dream Collection

**JACLYN
RANCH**

Benchmark Specifications

- 3 Bedrooms
- 2 Baths
- 1,725 Sq. Ft.
- 328 Sq. Ft. Integral Garage Space



American Dream Collection

JACLYN RANCH

Benchmark Specifications

JUNE 2021 HOUSE OF THE MONTH: DESCRIPTION

The Jaclyn Ranch plan provides a front entry garage without the typical “snout-house” look by incorporating much of the garage area into the custom design. The site added garage section can extend forward of the house front wall by as little as 10’ and blends softly into the front elevation and adjacent front entry porch. The split bedroom floor plan includes a nice entry foyer with guest closet and a large, great room style living/dining/kitchen space to keep the family together or entertain guests. The secondary bedroom “wing” is tucked away off the dining area. The very private, rear facing master suite features a huge walk-in closet and functional bath with custom cabinetry and a compartmented shower. For larger sites, the plan can be modified for garage entry from the left gable end by simply extending the site-built section forward and adding front windows.



American Dream Collection

JACLYN RANCH

Benchmark Specifications

EXTERIOR FEATURES INCLUDED IN THE HOUSE OF THE MONTH PACKAGE



Shown with site built porch and garage

Exterior Features Included in the House of the Month Package:

- RCDU front door (primed--paint optional)
- (3) pairs of louvered shutters
- 4 over 1 window grids
- Living Room "picture window" with fixed glass center section flanked by operable windows (no grids in fixed glass)
- Vinyl board & batten siding for 2 sides of front porch area (6'x12' porch area)
- 2-Panel style fire-rated door at garage entry

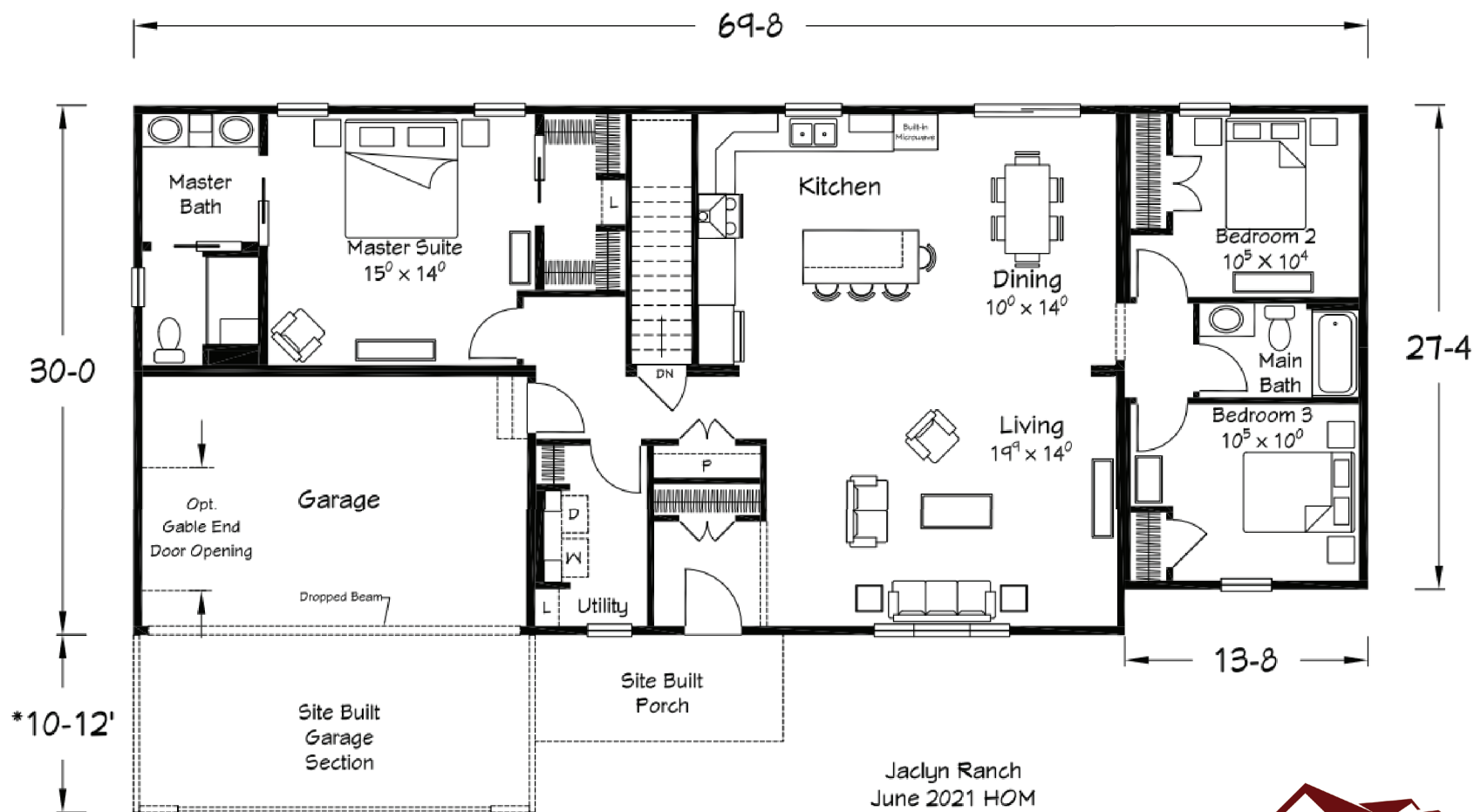


American Dream Collection

JACLYN RANCH

Benchmark Specifications

INTERIOR FLOORPLAN



*Shown at 10'
with front garage door location

Jaclyn Ranch
June 2021 HOM
1725 sq ft Living Area
(Plus 328 sq ft of garage area)


Ritz-Craft
Custom Building Simplified™

JACLYN RANCH

Benchmark Specifications

INTERIOR FEATURES INCLUDED IN THE HOUSE OF THE MONTH PACKAGE

Interior Features Included in the House of the Month Package:

- 8'-6" ceiling height throughout (9' option available most areas)
- 36" height kitchen wall cabinets
- Tall/Deep refrigerator overhead cabinet
- 30" Stainless Steel Chimney Hood
- Tall Microwave Pantry Cabinet (90") (microwave not included)
- (5) recessed lights in Kitchen (includes 1 over sink)
- 5 light sphere, driftwood color light over the island
- 2-Panel interior doors with Arts & Crafts trim package
- Pocket doors per plan
- Karndean LVP flooring in Foyer, LR, DR, Kitchen and MBR/Utility Hall (Hall between BR's 2 & 3 is carpeted)
- (2) w1530 wall cabinets with wood shelf and rod over W/D area
- Ventilated wood shelving in Utility area (3 in Linen area and 1 in hanging section)
- Vanity drawer bank with open shelf cabinet above in Master Bath
- Mohawk-Wanderers Loop-LVT flooring in Master Bath
- Shower pan with end-seat and tiled walls in Master Bath
- Chrome roller-door shower enclosure in Master Bath



American Dream Collection

JACLYN RANCH

Benchmark Specifications

INTERIOR IMAGES

