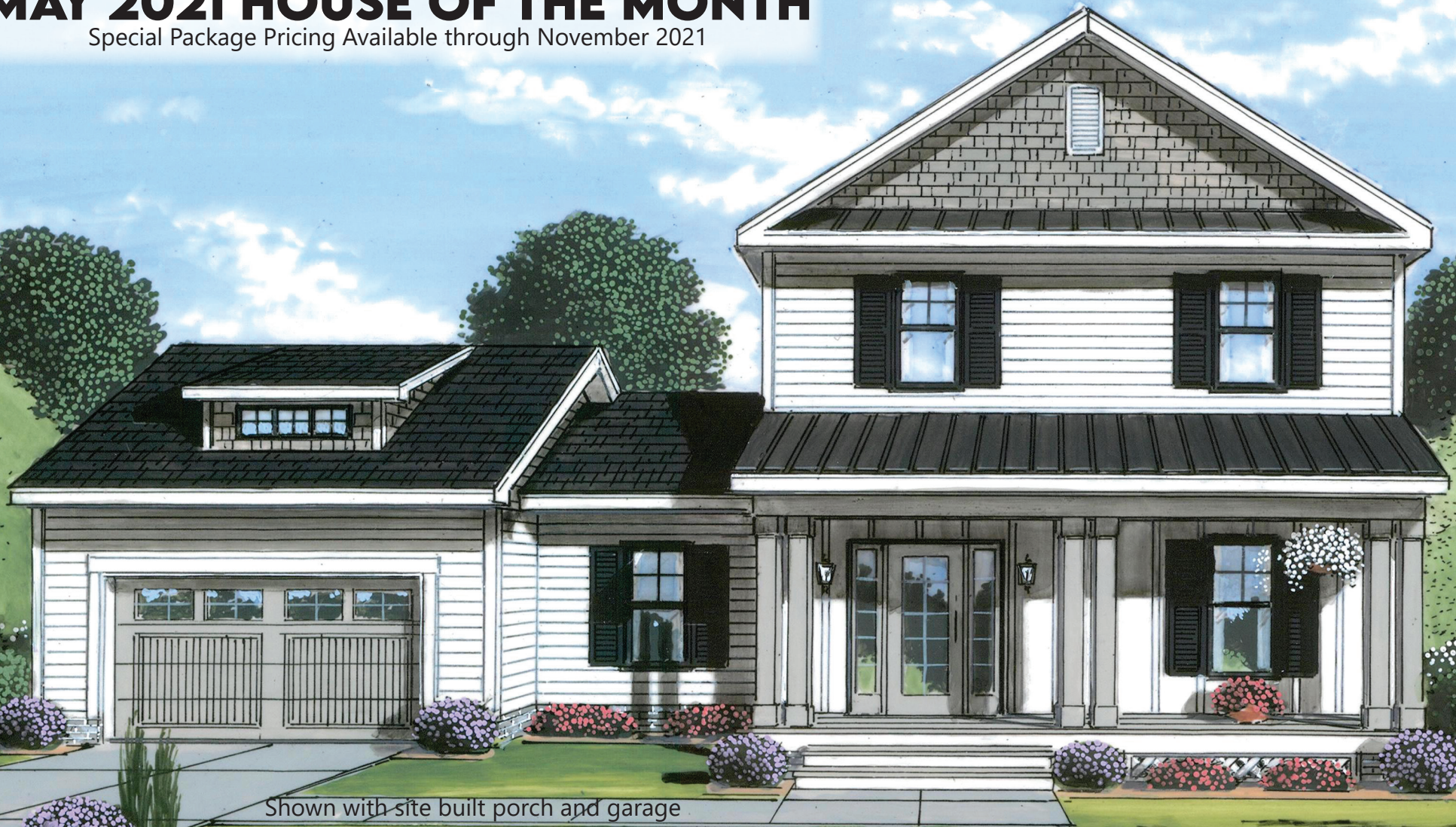


MAY 2021 HOUSE OF THE MONTH

Special Package Pricing Available through November 2021



American Dream Collection

MAYFIELD TWO STORY

Benchmark Specifications

- 3 Bedrooms
- 2.5 Baths
- Loft
- 2249 Sq. Ft

Ritz-Craft
Custom Building Simplified

American Dream Collection

MAYFIELD TWO STORY

Benchmark Specifications

MAY 2021 HOUSE OF THE MONTH: DESCRIPTION

The “updated-farmhouse” style Mayfield Two Story can be built with a two car garage on a building site that will accept a 62-64’ footprint. The open concept floorplan features open and connected family living spaces and a well appointed, first floor master suite. The large living room features an alcove with built-in entertainment cabinetry and recessed lighting. A nicely appointed kitchen includes an island/bar and is just steps away from a wide storage pantry and the utility room. The first floor owner’s suite has a wide walk-in closet and three operable awning windows. A master bath with large tiled shower and twin vanities rounds out the suite space. The upper level includes two large bedrooms--each with a walk-in closet, extra linen and storage closet space and a loft room for TV or gaming away from the living room.



American Dream Collection

MAYFIELD TWO STORY

Benchmark Specifications

EXTERIOR FEATURES INCLUDED IN THE HOUSE OF THE MONTH PACKAGE

Exterior Features Included in the House of the Month Package:

- 4 over 1 window grids throughout
- 5' 2" tall windows on first floor
- (4) pairs of louvered shutters
- RCDV Front Door with (2) RCSK Sidelites (primed--paint optional)
- (1) additional exterior light at Front Door
- Full width shingled eave return at front gable
- Decorative 24"x 36" rectangular gable vent (Fypon or equiv.)
- Vinyl board & batten siding for front porch area
- Portsmouth Shakes for front gable
- Fire-rated door at garage entry
- RCDU rear door (primed--paint optional)

(Black windows as shown in rendering are optional)



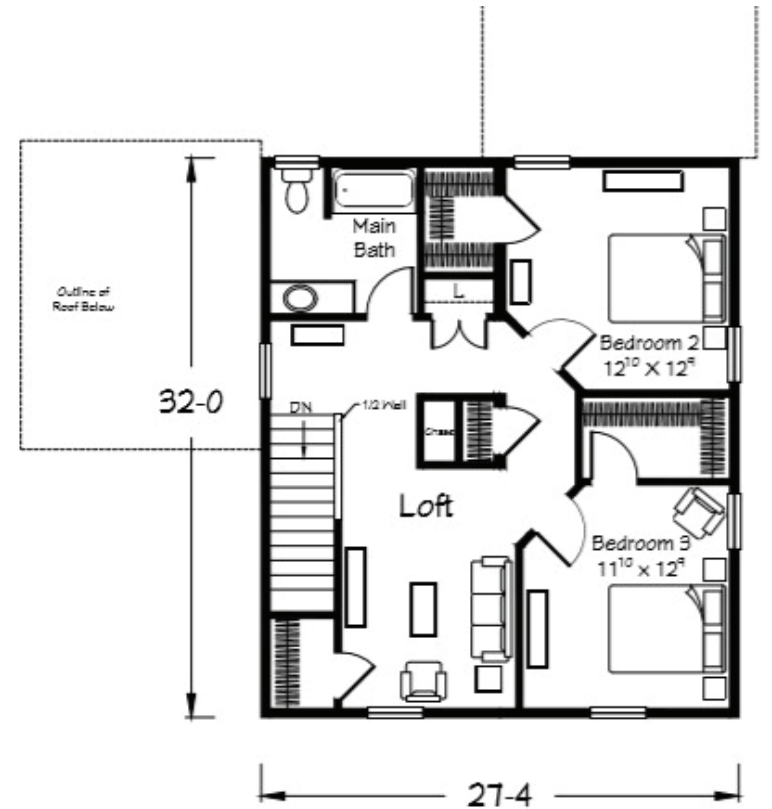
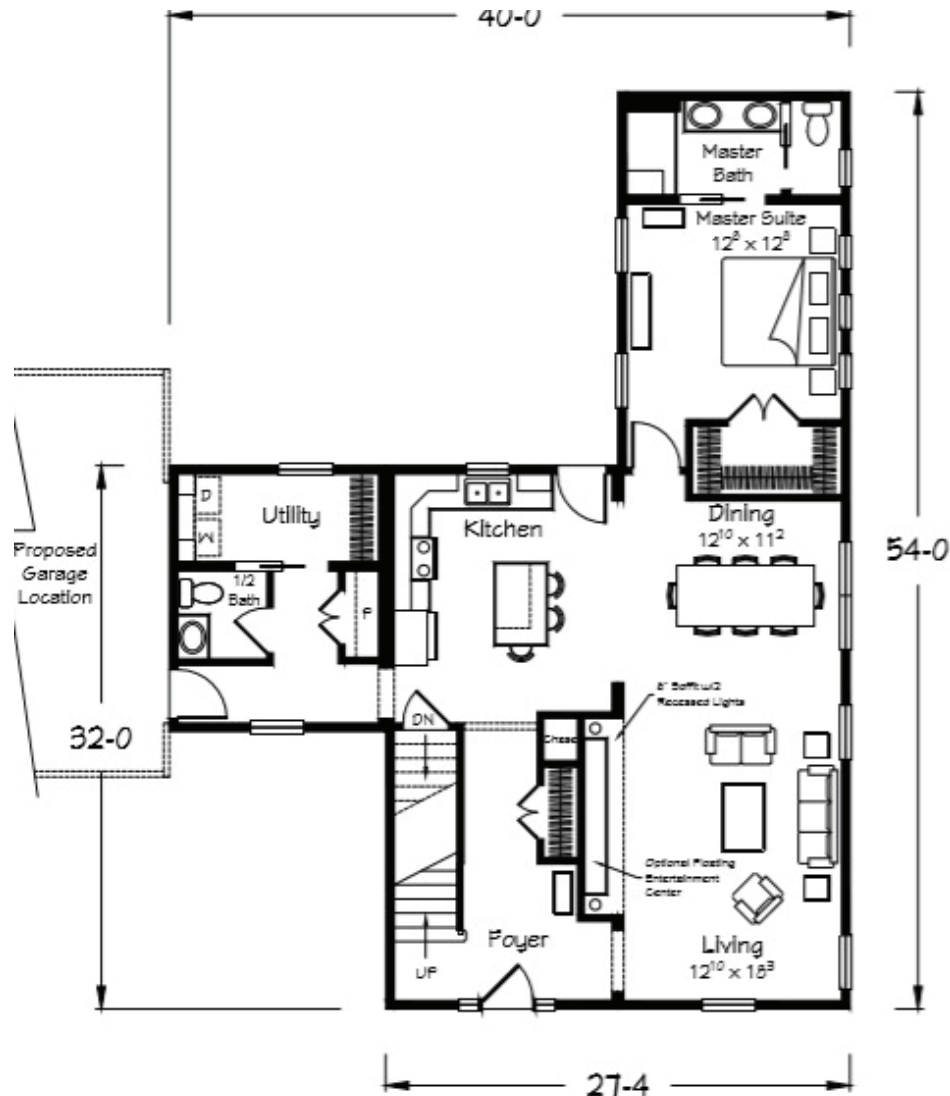
Shown with site built porch and garage

American Dream Collection

MAYFIELD TWO STORY

Benchmark Specifications

INTERIOR FLOORPLAN



American Dream Collection

MAYFIELD TWO STORY

Benchmark Specifications

INTERIOR FEATURES INCLUDED IN THE HOUSE OF THE MONTH PACKAGE

Interior Features Included in the House of the Month Package:

- 8' 6" ceiling height first floor (9' option available most areas)
- 36" height kitchen wall cabinets
- Tall/Deep refrigerator overhead cabinet with (2) refrigerator end panels
- (5) recessed ceiling lights in Kitchen (includes 1 over sink)
- (2) hanging pendant lights over island/bar
- "Prairie" stair railing
- 2-Panel, smooth interior doors throughout
- Pocket doors per plan
- Floating Entertainment Center cabinetry with 6" soffit and (2) recessed lights in LR
- Eureka 7"x48" LVP in Foyer, Kitchen, Garage Entry Hall, Pantry, 1/2 Bath, and Laundry
- (2) 1530 wall cabinets over W/D with wood shelf and hanging rod
- Ventilated wood shelf in Utility Room
- (3) operable awning windows in Master Bedroom
- End-Seat shower pan with tiled walls and Rolling Shower Door in Master Bath
- RevoTile flooring in Master Bath
- (4) recessed ceiling lights in Loft

