



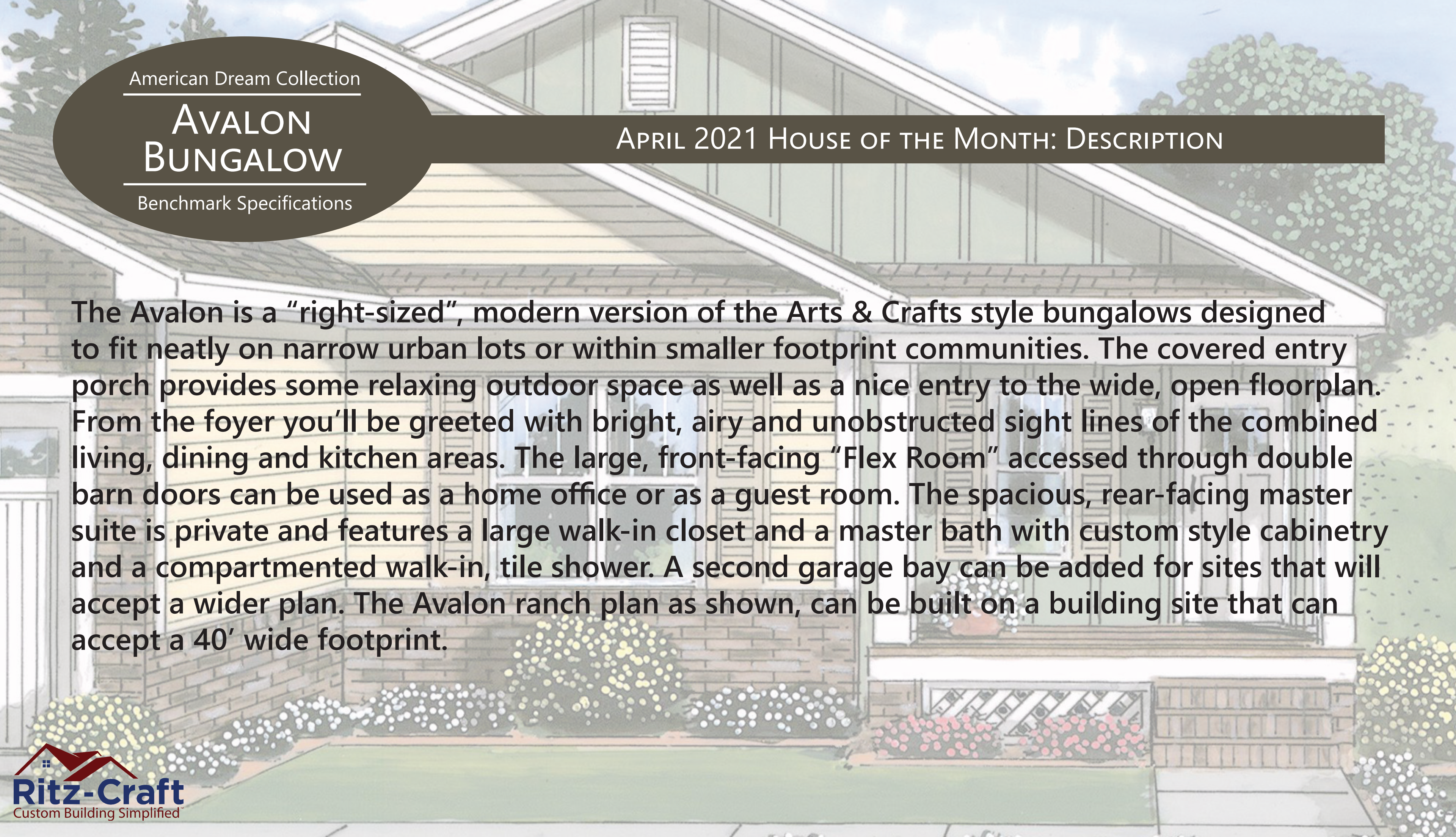
April 2021
HOUSE OF THE MONTH
Special Package Pricing Available
Through October 2021

American Dream Collection

AVALON BUNGALOW

Benchmark Specifications

- 2 BEDROOMS
- 2 BATHS
- FLEX ROOM
- 1818 Sq. Ft.
- INTEGRAL 1 CAR GARAGE

An architectural rendering of a modern bungalow house. The house features a wide, covered front porch with a brick base and white columns. The main body of the house has light-colored horizontal siding and large, multi-paned windows. A prominent dormer with a gabled roof and a central window is visible. The house is surrounded by greenery, including bushes and trees, under a blue sky with light clouds.

American Dream Collection

AVALON BUNGALOW

Benchmark Specifications

APRIL 2021 HOUSE OF THE MONTH: DESCRIPTION

The Avalon is a “right-sized”, modern version of the Arts & Crafts style bungalows designed to fit neatly on narrow urban lots or within smaller footprint communities. The covered entry porch provides some relaxing outdoor space as well as a nice entry to the wide, open floorplan. From the foyer you’ll be greeted with bright, airy and unobstructed sight lines of the combined living, dining and kitchen areas. The large, front-facing “Flex Room” accessed through double barn doors can be used as a home office or as a guest room. The spacious, rear-facing master suite is private and features a large walk-in closet and a master bath with custom style cabinetry and a compartmented walk-in, tile shower. A second garage bay can be added for sites that will accept a wider plan. The Avalon ranch plan as shown, can be built on a building site that can accept a 40’ wide footprint.

American Dream Collection

AVALON BUNGALOW

Benchmark Specifications

EXTERIOR FEATURES INCLUDED IN THE HOUSE OF THE MONTH PACKAGE

- 5/12 Tri-Mod roof system (7/12 options available)
- 3 over 1 window grids throughout
- RCDT front door (primed--paint optional)
- 8' wide sliding patio door in Living Room
- 8" bump-out area in Dining with triple window
- 2-panel, fire-rated door at garage entry
- (2) pairs of louvered shutters
- Decorative 16"x 27" gable vent
- Shingled eave returns as shown on front elevation
- Vinyl board & batten siding for 2-sides of front porch area and for large upper gable
- 5'-2" tall windows where shown



NOTE: GARAGE OVERHEAD DOOR NOT INCLUDED AND MUST BE SITE INSTALLED. PORCH ROOF IS AN EXTENSION OF THE MAIN ROOF--REQUIRED PORCH POSTS, FLOOR FRAMING, DECKING AND STAIRS/RAILINGS ARE NOT INCLUDED AND MUST BE SITE INSTALLED PER CODE AND SITE CONDITIONS.

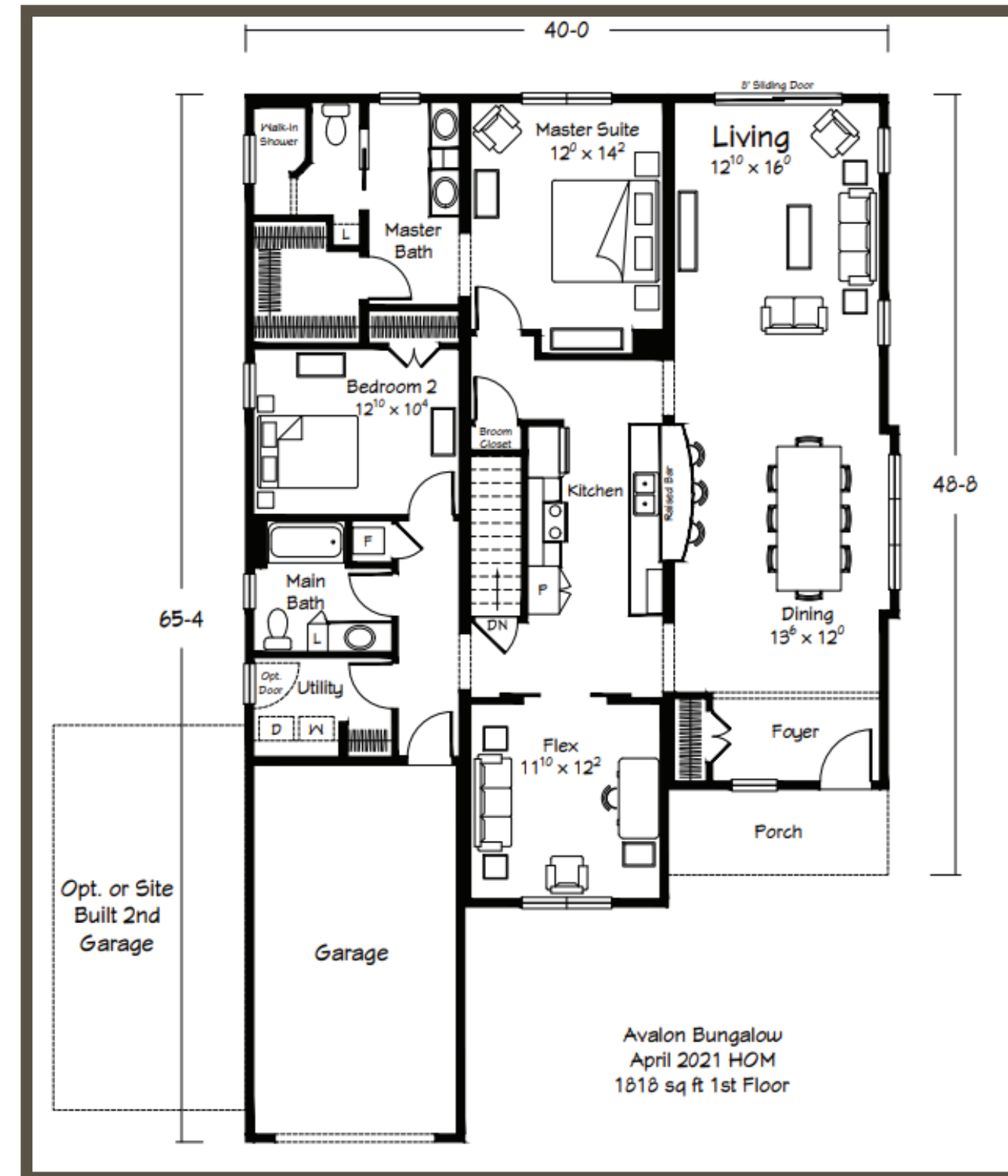
American Dream Collection

AVALON BUNGALOW

Benchmark Specifications

INTERIOR FEATURES INCLUDED IN THE HOUSE OF THE MONTH PACKAGE

- 8'-6" ceiling height throughout
(9' ceiling height option available in most locations)
- 36" tall kitchen wall cabinets
- Tall/Deep refrigerator overhead cabinet with end panel
- Tall pantry cabinet
- (4) recessed ceiling lights in Kitchen (includes 1 over sink)
- (2) hanging pendant lights over raised bar
- 2-panel, smooth interior doors with Arts & Crafts trim
- Pocket doors per plan
- Double, 2-panel "Barn Door" at entry to Flex Room
- Linen closet shelving in closet designated for optional furnace
- Ventilated wood shelving in Utility and Master Bath linen cubby
- DESIGN ELEMENT 6"x 48" LVP in Foyer, Kitchen and all Hall areas
- 12"x 24" RevoTile in Master Bath
- Full tile, walk-in "Mini-Infinity" shower in Master Bath



American Dream Collection

AVALON BUNGALOW

Benchmark Specifications

APRIL 2021 INTERIOR VIEWS IN THE HOUSE OF THE MONTH PACKAGE



NOTE: INTERIOR RENDERINGS SHOW OPTIONAL APPLIANCES AND FURNISHINGS WHICH ARE NOT INCLUDED.