

American Dream Collection

MERRIMACK CAPE COD

Benchmark Specifications

March 2021
**HOUSE OF
THE
MONTH**
Special Package Pricing Available
Through August 2021



SHOWN WITH SITE BUILT PORCH AND GARAGE


Ritz-Craft
Custom Building Simplified™

• 3 BEDROOMS • 2.5 BATHS • LOFT ROOM • 2430 Sq. Ft.
(INCLUDES 860 SQ. FT. PROPOSED UPPER LEVEL COMPLETION)

An architectural rendering of a two-story Cape Cod style house. The house features a dark grey shingled roof with three prominent front-facing dormers, each containing a multi-paned window. The exterior walls are finished with light grey stone or shingle siding. A wide front porch with white columns and a wooden railing spans the width of the house. The porch is elevated with a set of steps. Landscaping includes green lawns, various shrubs, and flowering plants in pots. The sky is blue with scattered white clouds.

American Dream Collection

MERRIMACK CAPE COD

Benchmark Specifications

MARCH 2021 HOUSE OF THE MONTH: DESCRIPTION

At 2430 square feet of living area, the unique Merrimack Cape provides plenty of family space in a plan with an elegant, first floor master suite. The private master's area includes a large sitting room with barn doors that can double as a private office. The owners suite is further complimented by double walk-in closets and a large custom-appointed bath with full tile, walk-in shower. The Merrimack's main level has spacious and interconnected living and dining areas as well as a true "cook's kitchen" with plenty of counter space and oversized island bar. A secondary "family entry" door makes for convenient access from the garage/driveway side of the plan. The upper level can be finished to include two nicely sized bedrooms, a full bath and a bright, cheery loft space with three front-facing dormers.

American Dream Collection

MERRIMACK CAPE COD

Benchmark Specifications

MARCH 2021 EXTERIOR FEATURES INCLUDED IN THE HOUSE OF THE MONTH PACKAGE

- 12/12 pitch Cape Cod roof system (for site completion of upper level)
- (3) 4' Cape Cod dormers
- Shingled eave returns at front pod
- 4 over 1 window grids throughout
- RCDV front door (primed--paint optional)
- RCDU secondary front entry door (primed--paint optional)
- 2-panel, fire rated garage access door
- Vinyl board & batten siding for front porch wall areas
- NORTHWOODS SHAKES for 3-sides of dormers and front wall of sitting room pod
- (1) additional front door porch light--(3) 49183BK lights total
- (3) pairs louvered shutters
- Azek (or equal) trim boards around front triple window (1x6 top board--1x4's at sides/bottom)



NOTE: SHOWN WITH SITE BUILT PORCH AND GARAGE.

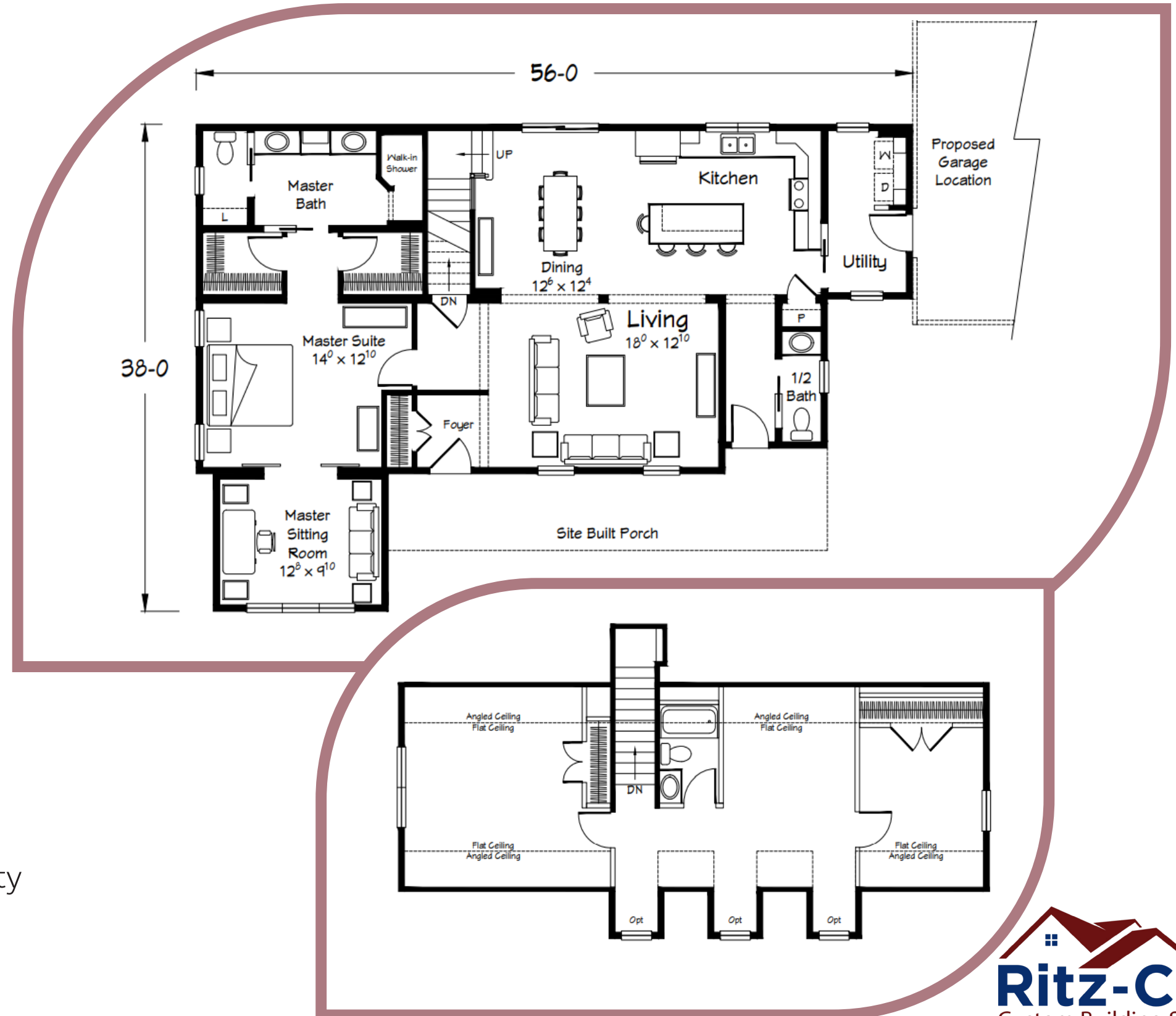
MERRIMACK CAPE COD

Benchmark Specifications

MARCH 2021 INTERIOR FEATURES INCLUDED IN THE HOUSE OF THE MONTH PACKAGE

First Floor

- 8'-6" ceiling height throughout (9' option available most areas)
- 36" tall kitchen wall cabinets
- Tall/Deep refrigerator overhead cabinet with end panels
- (6) recessed ceiling lights in kitchen (includes 1 over sink)
- (3) hanging pendant lights over island/bar
- (2) 1530 wall cabinets with wood shelf/rod over W/D area
- Arts & Crafts trim with 2-panel interior doors
- Pocket doors per plan
- Double, two-panel barn door in master suite
- "Mini-Infinity" full tile, walk-in shower in master bath
- Dropped height drawer bank with open shelf storage cabinet above in master bath
- Ventilated wood linen closet shelving in master bath
- "Prairie" style stair railing
- DESIGN ELEMENT 6"x 48" LVP in Foyer, LR, Master Entry Hall, Kitchen/Dining, Rear Hall, 1/2 Bath and Utility
- 12"x 24" RevoTile flooring in Master Bath



American Dream Collection

MERRIMACK CAPE COD

Benchmark Specifications

MARCH 2021 INTERIOR VIEWS IN THE HOUSE OF THE MONTH PACKAGE



NOTE: INTERIOR RENDERINGS SHOW OPTIONAL APPLIANCES AND FURNISHINGS WHICH ARE NOT INCLUDED.