

Lake & Lodge Collection

# FERN RIDGE TWO STORY

Benchmark Specifications

## February 2021 HOUSE OF THE MONTH

Special Package Pricing Available  
Through July 2021

- 4 BEDROOMS
- 2.5 BATHS
- 2,349 Sq. Ft.



NOTE: SHOWN WITH SITE BUILT PORCH AND GARAGE

  
**Ritz-Craft**  
Custom Building Simplified™





Lake & Lodge Collection

# FERN RIDGE TWO STORY

Benchmark Specifications

## FEBRUARY 2021 HOUSE OF THE MONTH: DESCRIPTION

The Fern Ridge Two Story is the perfect plan to take full advantage of a home site with great, rear-facing views. This four bedroom, two and-a-half bath plan includes a spacious first floor master suite with a custom style bath and double closets. The large kitchen with island/bar has an open view of the spectacular vaulted great room with its double sliding doors and custom upper gable windows. There's plenty of room for family and house guests as the upper level of this plan includes three large secondary bedrooms, a full bath and spacious loft room that overlooks the great room below. The Fern Ridge offers curb appeal from both the entry side and rear elevation making it a great design for mountain or water view locations.



Lake & Lodge Collection

# FERN RIDGE TWO STORY

Benchmark Specifications

## FEBRUARY 2021 EXTERIOR FEATURES INCLUDED IN THE HOUSE OF THE MONTH PACKAGE

- Combination 7/12 and 12/12 Roof areas with box-prow at rear gable
- Tan windows & vinyl sliding glass doors throughout
- RCDT front door (primed--paint optional)
- Fire-rated door replacing window in Utility Room for garage access (2-panel)
- Integral, flat stock style window trim on all operable windows (replaces traditional brick-molding)
- Shingled eave return at front gable (at BR 2)
- 1x10 Azek (or equal) at top and bottom of board & batten sided areas
- 1x6 Azek (or equal) for trim between lap siding and shakes
- Vinyl Board & Batten siding for first floor front elevation, first floor rear elevation and for vaulted rear gable end area
- PORTSMOUTH vinyl shakes for front and rear gable areas as shown on elevations
- Shingled eave returns on rear 12/12 gable
- 1x10 and 1x6 Azek (or equal) trim board for rear elevation sliding doors and for around and between 8-piece gable window array



NOTE: SHOWN WITH SITE BUILT GARAGE AND PORCH.

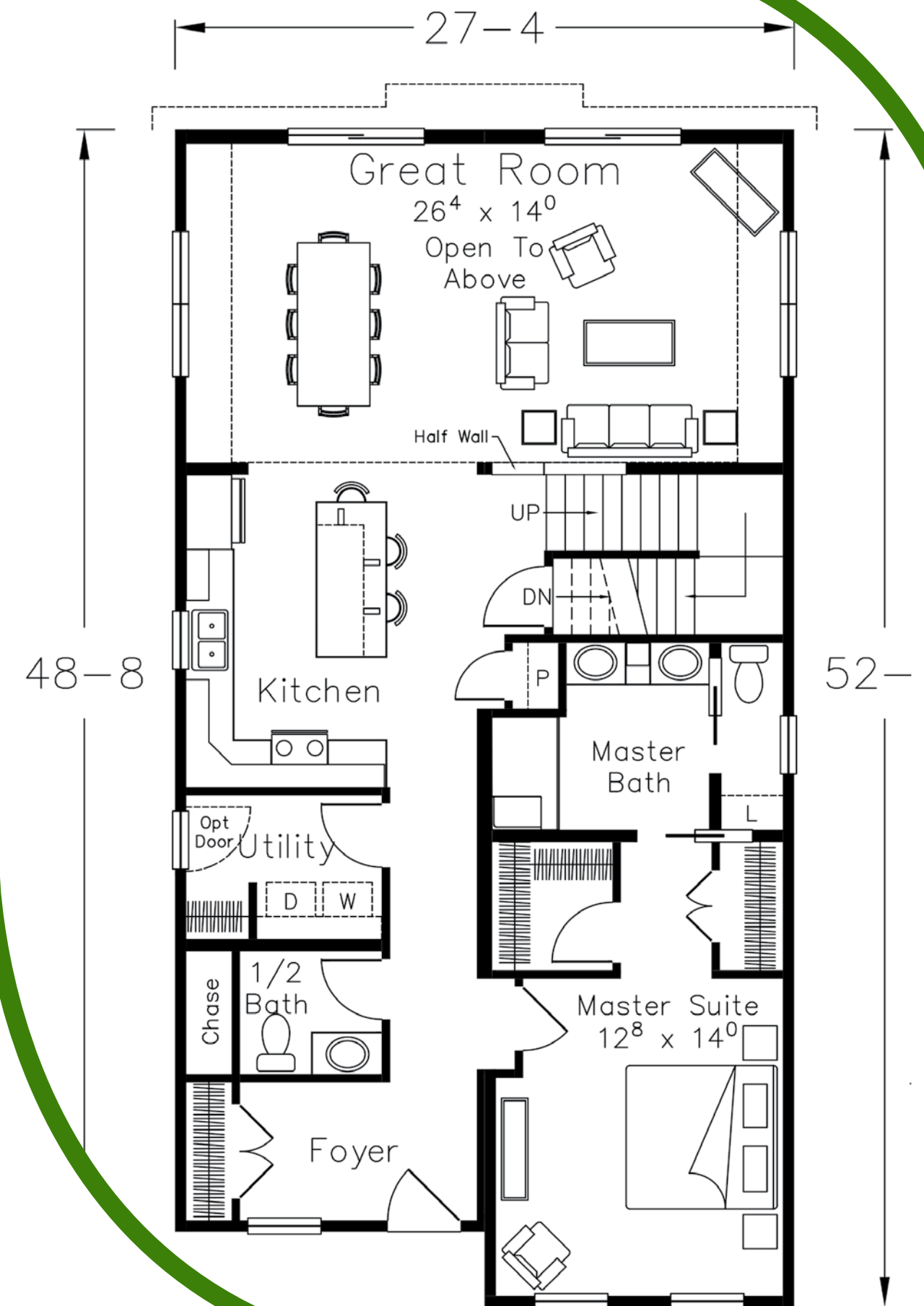
# FERN RIDGE TWO STORY

Benchmark Specifications

## FEBRUARY 2021 INTERIOR FEATURES INCLUDED IN THE HOUSE OF THE MONTH PACKAGE

### First Floor

- 8'-6" ceilings throughout first floor with 12/12 vaulted ceiling in Great Room
- 36" height kitchen wall cabinets
- Tall/Deep refrigerator overhead cabinet
- (5) recessed ceiling lights in kitchen (includes 1 over sink)
- (3) hanging pendant lights over island/bar
- EUREKA 7" X 48" LVP throughout Foyer, Hall, Kitchen and Great Room
- MANNINGTON "Adura-Max" LVP in Master Bath, Utility Room and 1/2 Bath
- Arts and Crafts trim with 2-panel interior doors throughout
- Pocket doors per plan
- Ventilated wood closet shelving in Master Closets, Master Linen, Utility Room and Guest Closet
- Seated shower pan in Master Bath with tiled walls and chrome roller-door enclosure
- Dropped height drawer bank in Master Bath with open shelf storage cabinet above





Lake & Lodge Collection

# FERN RIDGE TWO STORY

Benchmark Specifications

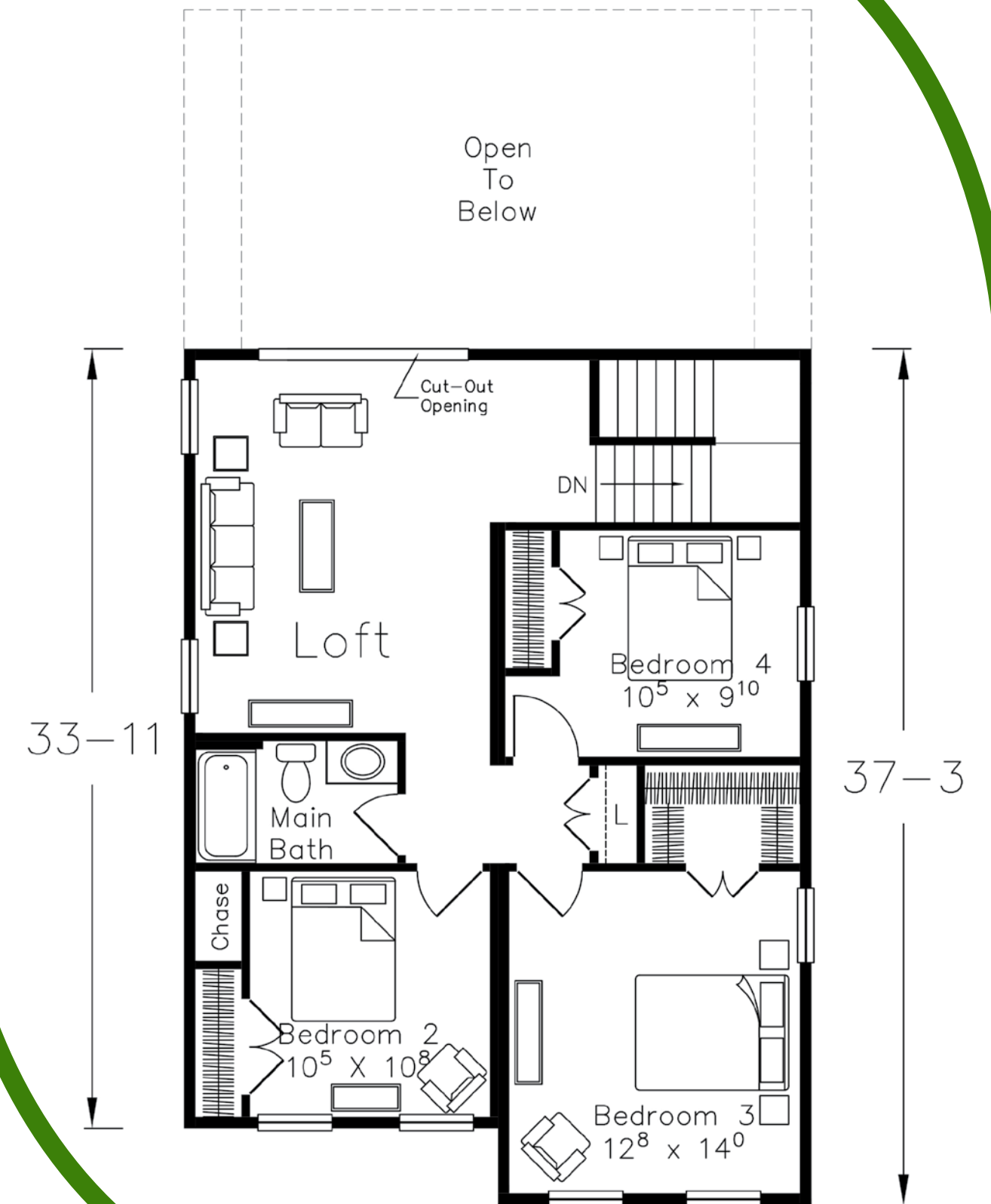
FEBRUARY 2021 INTERIOR FEATURES  
INCLUDED IN THE HOUSE OF THE MONTH PACKAGE

## Second Floor

- 8'-0" ceilings throughout second floor (8'-6" ceiling option available)
- (4) recessed lights in the Loft room
- Hang-safe junction box with double switch (for site-installed fan/light in Loft room)



REAR ELEVATION SHOWN WITH SITE BUILT DECK.





Lake & Lodge Collection

# FERN RIDGE TWO STORY

Benchmark Specifications

FEBRUARY 2021 INTERIOR VIEWS IN THE HOUSE OF THE MONTH PACKAGE



NOTE: INTERIOR RENDERINGS SHOW OPTIONAL APPLIANCES AND FURNISHINGS WHICH ARE NOT INCLUDED.