



JADE TREE RANCH

Benchmark
Modern Living
Specifications

3 Bedrooms, 2 Baths
1,680 Sq. Ft

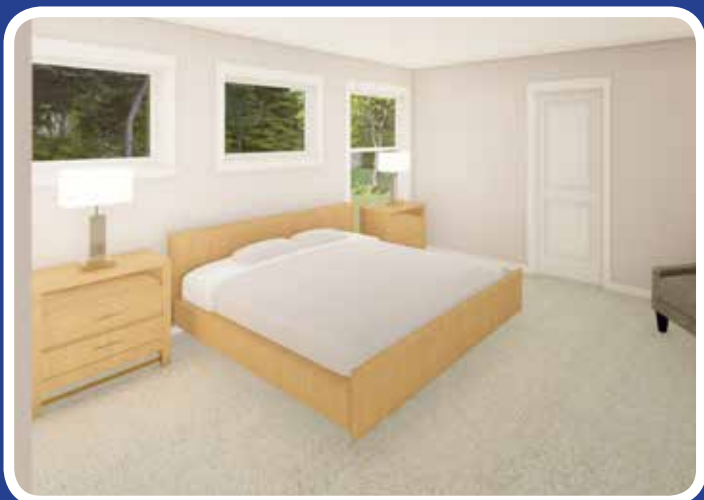
The Jade Tree Ranch may be the perfect plan for those seeking a modern exterior coupled with a free-flowing and open interior plan. Upon entry, you'll be greeted with an unobstructed view of the "Loft-Style" Living areas.

The living, kitchen and dining rooms share an angled ceiling adding volume and style. Large windows throughout complete the open and bright feel of the main living areas. The kitchen includes a large, free-standing island/bar and additional open shelf cabinets over the wall cabinets on the range side. The secondary bedroom "wing" includes nicely sized bedrooms, a bath and large utility room that can include an optional door for access to a garage. The master suite features a full walk-in tile shower, tile floor, custom style cabinetry and two large, fixed transom windows that add brightness while maintaining privacy.



JADE TREE RANCH

Benchmark
Modern Living
Specifications



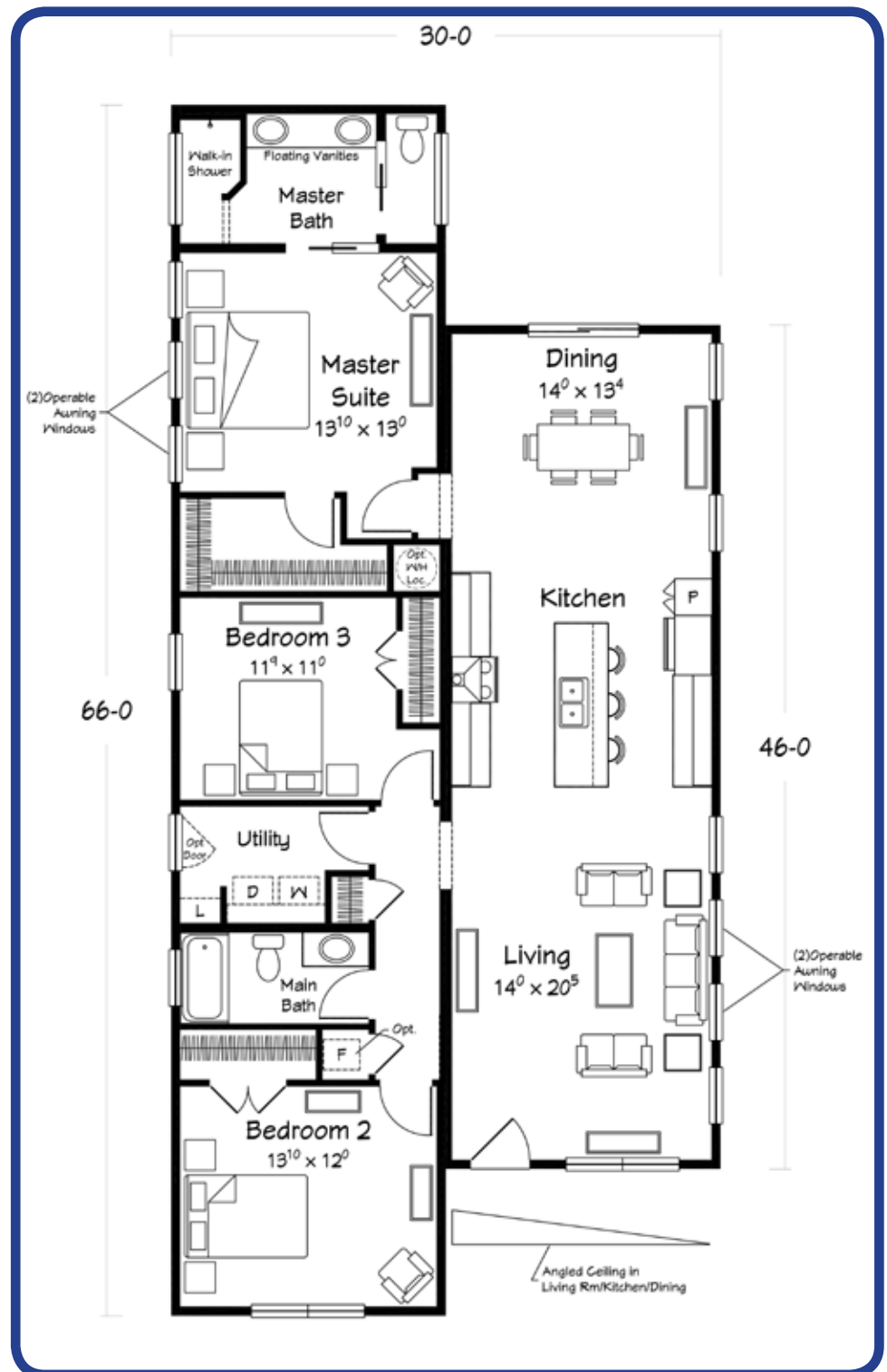
- Combination 3/12-4.5/12 “sawtooth” roof truss system
- Roof prepped for on-site metal roofing
- House wrap at all exterior walls as prep for site installed siding (siding is optional)
- Black cottage style windows and operable awning windows included
- (1) 3’ fixed transom in main bath (not standard this series)
- (2) 5’ fixed transom windows in master bath (not standard this series)
- Sliding Patio Door in Dining (Black)
- Painted RCDDR front door (standard this series)
- (2) Seaside - 1 black exterior light

NOTE: ALL SIDING MATERIALS, METAL ROOFING, PORCHES, DECK AND SUSPENDED FRONT ENTRY ROOF ARE SITE ADDED FEATURES.



JADE TREE RANCH

Benchmark
Modern Living
Specifications



- Angled ceiling throughout Living, Kitchen and Dining. (7'-4" at exterior wall side-9'3" at mating wall side of rooms)
- 8' ceiling height in Bedrooms, Baths and Utility
- Furnace closet converted to linen closet with (3) 16" deep ventilated wood shelves
- Ventilated wood shelving in Utility Room, Linen area and all closets
- 2-panel, smooth interior doors with Arts & Crafts trim
- Stainless Steel, tower range hood in kitchen
- Open shelf cabinets above the 30" wall cabinets on the range side of the kitchen
- (5) recessed ceiling lights in kitchen (includes 1 over sink)
- (2) hanging pendant lights over island/bar
- DESIGN ELEMENTS 6" x 48" LVP in LR, Kitchen, Dining, Hall and MBR entry hall
- Mini-Infinity, full tile, walk-in shower in Master Bath
- 6" x 36" RevoTile throughout Master Bath
- Floating vanity cabinets in baths
- Pocket Doors per plan