

JAYDEN Two Story

Benchmark
Specifications

July 2020
HOUSE OF THE MONTH

Special Package Pricing Available
Through November 2020



• 3 Bedrooms & Home Office • 2.5 Baths • 2,151 Sq. Ft.



JAYDEN TWO STORY

Benchmark
Specifications

JULY 2020 HOUSE OF THE MONTH: DESCRIPTION

The Jayden Two Story can be built with a 2-car garage on a 52-54' building envelope. The classic exterior with two, large front gables can have a modern farmhouse look as shown or with just a few changes embrace a more traditional, colonial style. Upon entry, the wide foyer provides a long view of the open living areas. Neatly tucked off the foyer is a nicely sized home office or den that can be made private with the addition of optional double doors. The rear-facing kitchen, dining and living rooms are open and connected providing one large area for family activities or entertaining. The second floor includes three large bedrooms and a convenient, well equipped laundry room. The oversized owner's suite features large, rear facing windows and a well appointed master bath with large double vanity, seated shower, privacy pocket door and adjacent walk-in closet.

JAYDEN TWO STORY

Benchmark
Specifications

JULY 2020 HOUSE OF THE MONTH: EXTERIOR FEATURES

- RCDU front door with single RCSL sidelite (primed--paint optional)
- 8' sliding patio door in Dining (6' sliding door is standard)
- Fire-rated door at garage entry
- 5' 6" tall windows in Home Office and Living Room
- 4 over 1 window grids throughout
- (5) pairs of louvered shutters
- 12" x 30" decorative "eyebrow louver" for large front gable
- Vinyl board & batten siding for front elevation areas as shown
- Combination 9/12 and 6/12 roof trusses (refer to shop drawings for details)

NOTE: BRICK EXTERIOR, GARAGE AND FRONT ENTRY ROOF ARE SITE ADDED FEATURES. ARTIST'S RENDERING SHOWS BLACK WINDOWS WHICH ARE NOT INCLUDED IN THE HOUSE OF THE MONTH PACKAGE. WINDOW COLORS OTHER THAN WHITE MUST BE ORDERED AS AN OPTION.



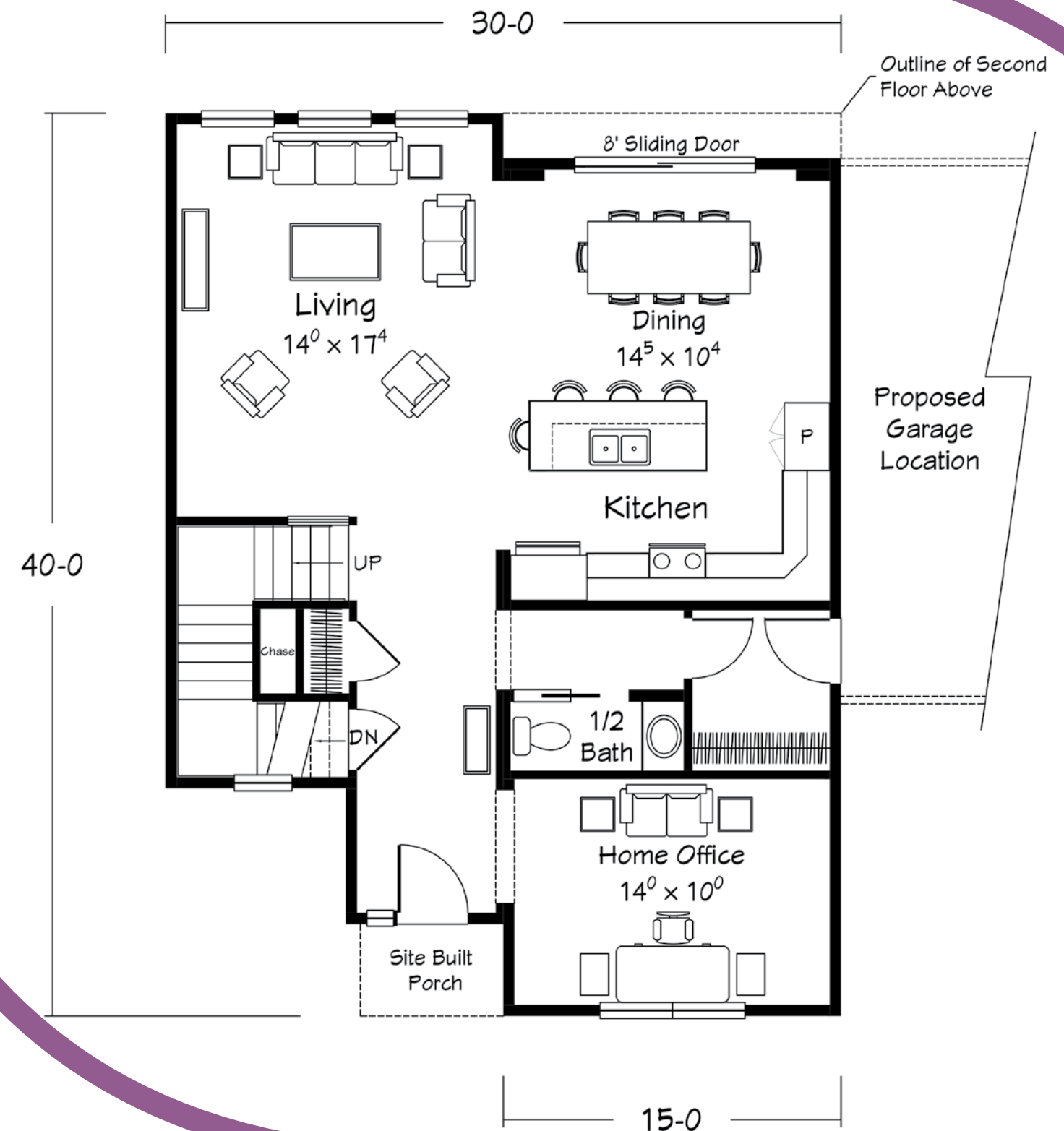
JAYDEN Two Story

Benchmark
Specifications

JULY 2020 HOUSE OF THE MONTH: INTERIOR FEATURES

First Floor Features

- 9' ceilings throughout first floor (8' ceilings second floor)
- 36" height kitchen wall cabinets
- Deep refrigerator overhead cabinet
- Pocket doors as shown on plan
- (5) recessed ceiling lights in kitchen (includes 1 over sink)
- (2) hanging pendant lights over island/bar
- "Prairie Style" stair railing per plan
- Arts and Craft interior trim with 2-panel, smooth interior doors
- DESIGN ELEMENTS 6" x 48" LVP in Foyer, Hall, 1/2 Bath, Living, Dining and Kitchen



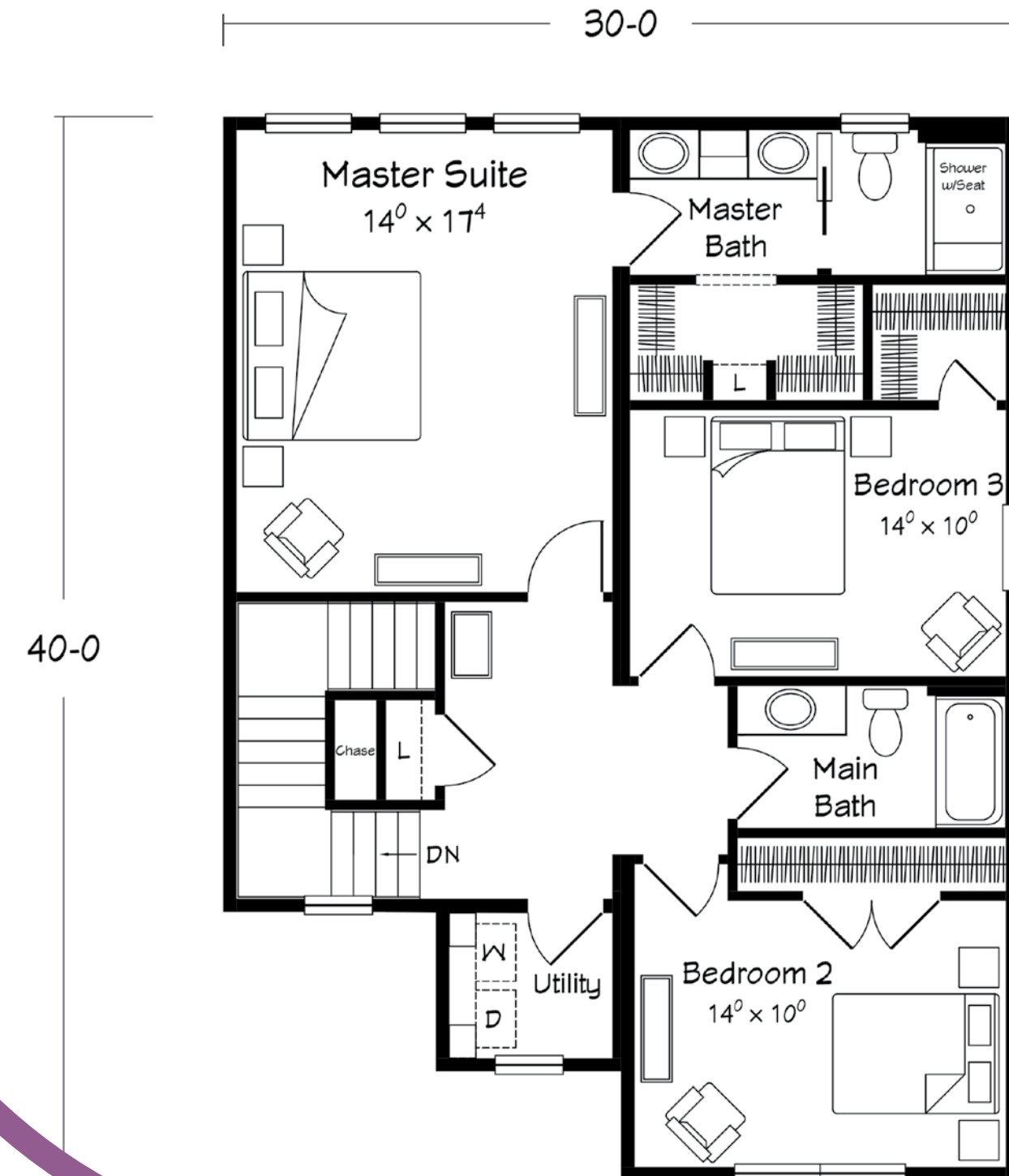
JAYDEN TWO STORY

Benchmark
Specifications

JULY 2020 HOUSE OF THE MONTH: INTERIOR FEATURES

Second Floor Features

- 8' ceilings second floor
- (2) wall cabinets with ventilated wood shelf in Utility above W/D
- Seated shower pan with tiled walls and glass accent strip in Master Bath
- Chrome “roller door” shower enclosure in Master Bath
- REVO-TILE flooring in Master Bath
- Open shelf storage cabinet at Master Vanity
- Ventiladed wood shelving in Master Closet



JAYDEN Two Story

Modern Benchmark
Specifications

