

American Dream Collection

NARRAGANSETT CAPE

Benchmark Specifications

November 2020
HOUSE OF THE MONTH

Special Package Pricing Available
Through May 2021



• 3-5 BEDROOMS • 2.5-3.5 BATHS • 3,159 Sq. Ft.
INCLUDES 1,187 SQ. FT. OF UPPER LEVEL AREA

An architectural rendering of a two-story Cape Cod style house. The house features a dark grey shingled roof with white trim around the windows and doors. There are several windows, including a large multi-paned window on the left side of the first floor and a smaller window in the center of the second floor. The house is set on a green lawn with a sidewalk in the foreground. The sky is blue with some clouds.

American Dream Collection

NARRAGANSETT CAPE

Benchmark Specifications

NOVEMBER 2020 HOUSE OF THE MONTH: DESCRIPTION

With full completion of the upper level, the handsome Narragansett Cape provides up to five bedrooms and three and a half baths. The open first level includes a large entry foyer with open views of all of the main living areas. A nicely defined, yet open, formal living room is adjacent to the kitchen dining and large family room making the plan perfect for large families and for entertaining. The main level includes two nicely sized secondary bedrooms and a first-floor master suite that is tucked away for privacy. The master quarters feature a large walk-in closet and well appointed bath with large double vanity and tiled, seated shower. The large upper level is accessed by a centrally located stairwell and can provide two additional bedrooms and a large additional family room. The Narragansett is custom designed for those seeking classic curb appeal and large plan interior features.

American Dream Collection

NARRAGANSETT CAPE

Benchmark Specifications

NOVEMBER 2020 EXTERIOR FEATURES INCLUDED IN THE HOUSE OF THE MONTH PACKAGE

- Combination 12/12 and 10/12 roof trusses
- 8' Shed dormer with twin window
- (5) pairs of louvered shutters
- 6 over 1 window grids throughout
- RCDDZ front door (primed--paint optional)
- Full width shingled eave return at front gable
- PORTSMOUTH vinyl shakes for front wall of Utility Area, Shed Dormer and Front Gable



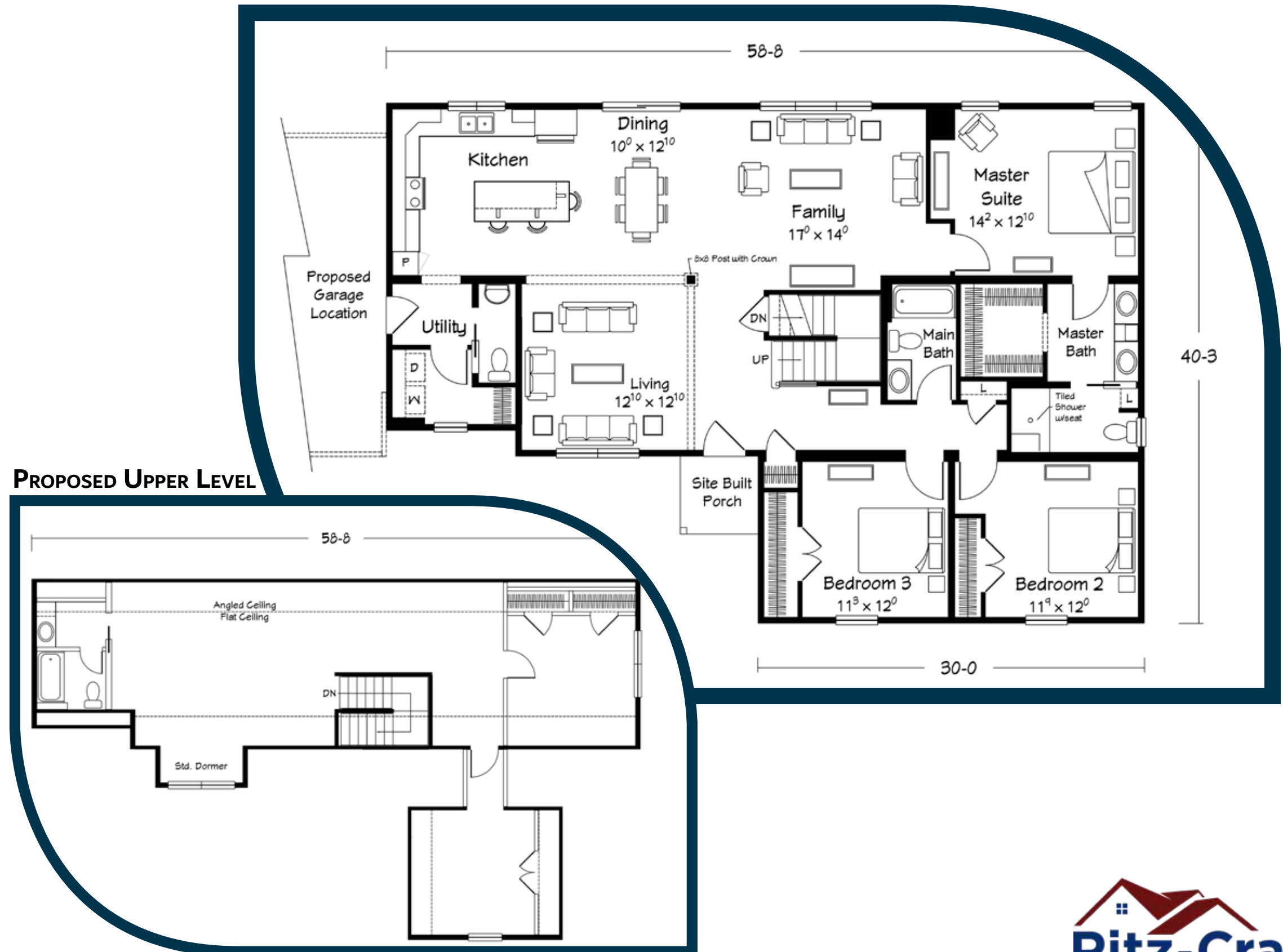
NOTE: SHOWN WITH SITE BUILT PORCH AND GARAGE

NARRAGANSETT CAPE

Benchmark Specifications

NOVEMBER 2020 INTERIOR FEATURES INCLUDED IN THE HOUSE OF THE MONTH PACKAGE

- 8'-6" ceiling height throughout
- 36" height kitchen wall cabinets
- 90" tall pantry cabinet
- Tall/Deep refrigerator overhead cabinet
- (8) recessed ceiling kitchen lights (includes 1 over sink)
- (3) hanging pendant lights over island/bar
- Prairie style open rail at stair (as shown)
- 2-panel (smooth) interior doors with Arts & Crafts trim
- Pocket doors as shown
- MOHAWK 9"x80" Antique Craft Laminate in Foyer, Hall, Kitchen, Dining and Family Room
- 6"x24" REVO-TILE in Master Bath
- Shower with seat and tiled walls in Master Bath
- Chrome roller-door shower enclosure in Master Bath
- Ventilated wood closet shelving in Master Closet and Master Linen
- Dropped headers (as shown) at Living Room



American Dream
Collection

NARRAGANSETT CAPE

Benchmark
Specifications

