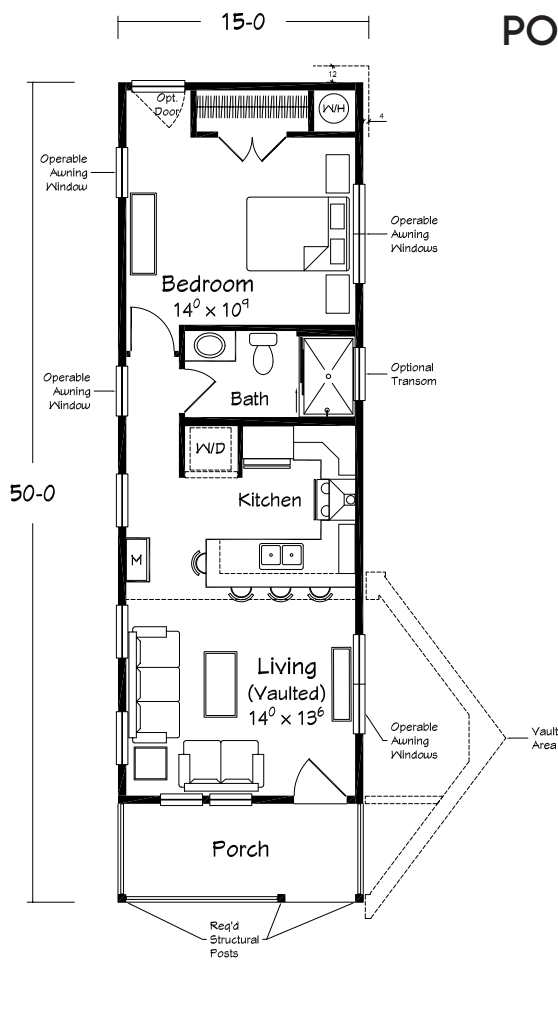


Shown with integral finished porch, vault roof and optional decorative dormer

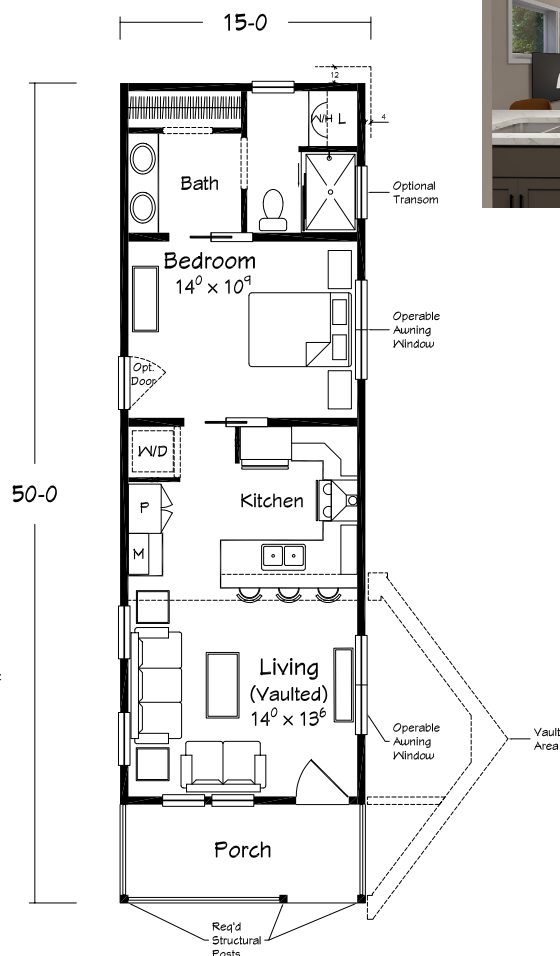
NEW PLAN OF THE MONTH: JUNE 2026 POLARIS COTTAGE PLANS I & II

MODERN LIVING SERIES - BENCHMARK SPECIFICATIONS
1 BEDROOM | 1 BATH | 658 SQ. FT. LIVING | 90 SQ. FT. INTEGRAL PORCH

POLARIS COTTAGE I



POLARIS COTTAGE II



Scan QR for Interior Views



- The Polaris Cottage Plans include a crane-on vaulted roof-cap assembly. Interior side finishes of the vaulted ceiling are to be finished on site. The pre-engineered vaulted roof-cap assembly cannot be modified.
- Polaris Cottage plans are designed to ship on one carrier—no length extensions are available for these plans.

Artist's renderings depict homes as they may be built on a typical site. Renderings may show optional or site installed features. Some elevations include uniquely designed standard features. Refer to Ritz-Craft's "Modern Living Series - Benchmark Specifications & Plan-Specific Drawings" to review standard and optional features. Be sure to thoroughly discuss all aspects of your building project with your selected home builder.