

HOMESTEAD
SERIES

Le Grand Collection

Ranch, Cape Cod Style and Two Story Homes from 1390 to 2418 Square Feet



Ritz-Craft Custom Building Simplified™

LeGrand Collection

Homestead “LeGrand” plans include specially designed exterior and interior features in addition to our quality Homestead Series standards.

The packaged front elevation “curb-appeal” features are specific to each LeGrand floor plan and are only available with Homestead LeGrand Collection homes.

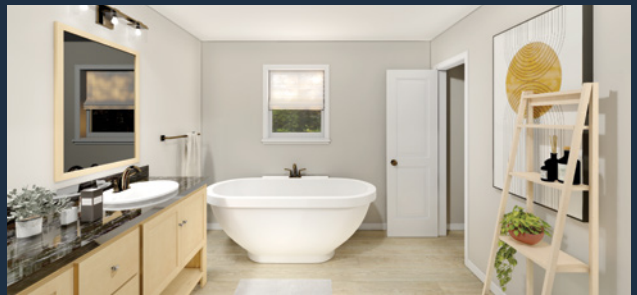
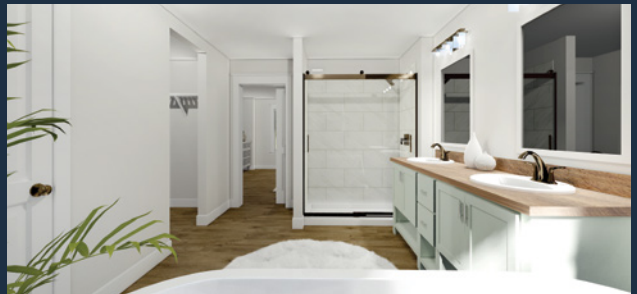
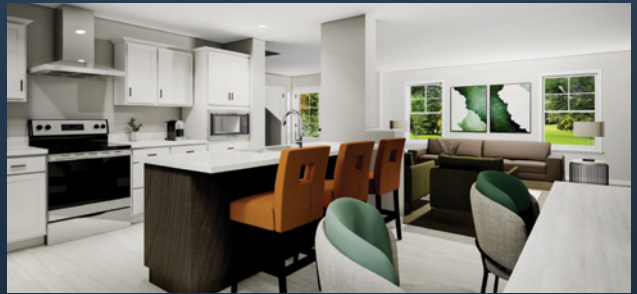
INCLUDED EXTERIOR FEATURES:

- Each exterior bump-out area shown on the elevation includes a panelized gable roof dormer. Ranch gable dormers are 7/12 pitch. Cape gable dormers are 10/12.
- Front recess area as shown on elevation (most plans)
- Sliding glass doors (where shown)
- Front shutters

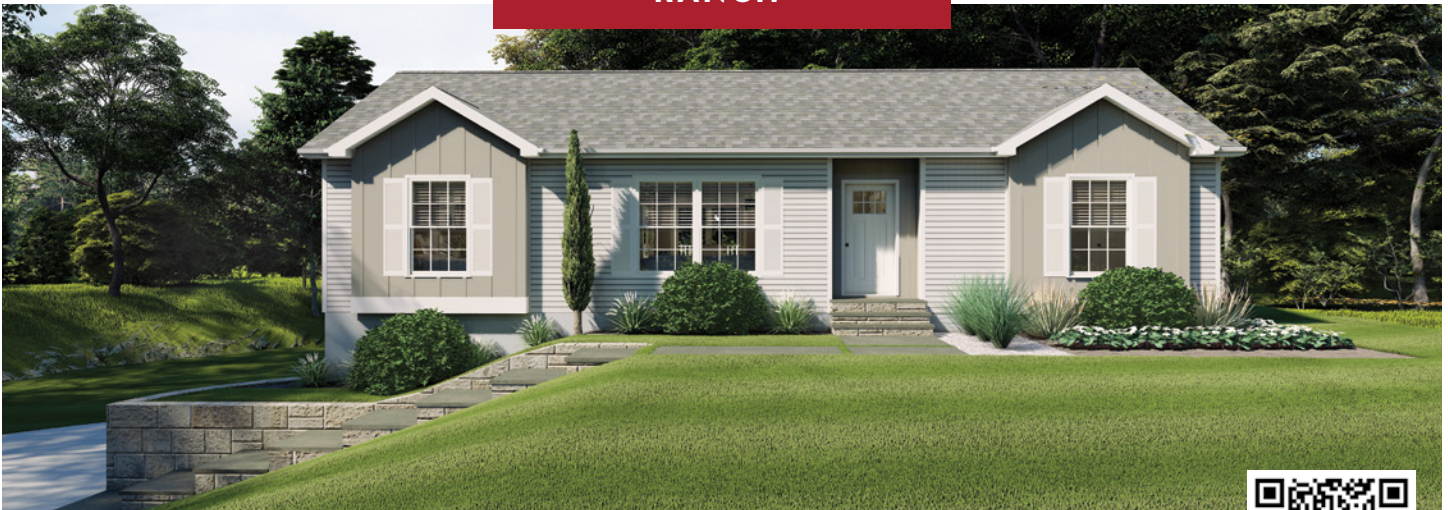
*Note: Cape Cod roof dormers with windows are optional.
Please refer to floor plans.*

INCLUDED INTERIOR FEATURES:

- Deep refrigerator overhead cabinet
- Stainless Steel chimney-style range hood
- Microwave cabinet (per plan)
- Additional built-in cabinetry features (per plan)
- Free-standing oval tub in owner’s bath
- Duma-Wall shower with chrome slide-by, roller door in owners bath
- Interior pocket doors (where shown)

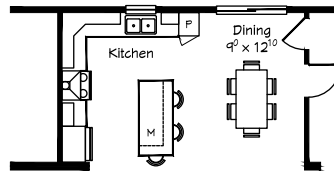
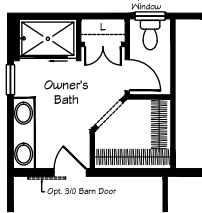


RANCH

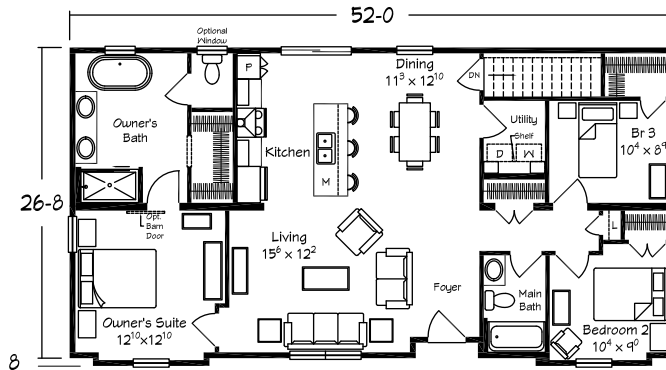


Scan for
interior views

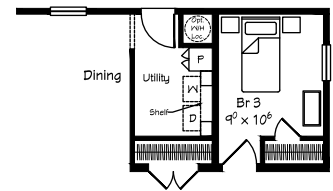
Optional Bath
Configuration
with 4260
Shower



Optional Kitchen
Configuration



Crawl Space Configuration



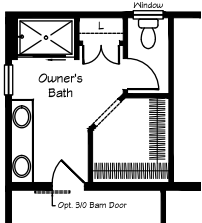
Le Grand

RANCH 1392

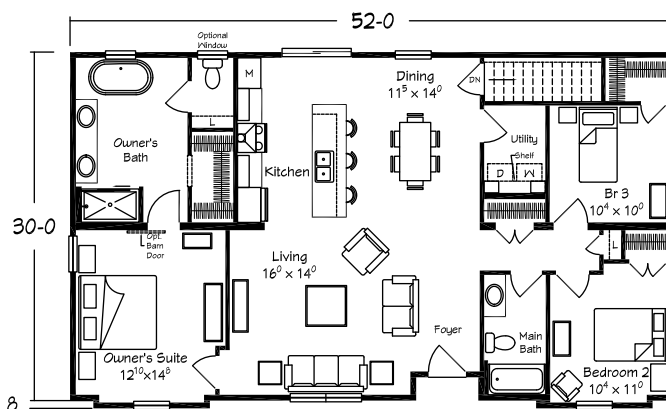
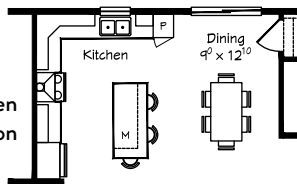
1392 sq. ft. • 3 BRs • 2 Baths

Note: This plan is
designed to accept
a basement level
garage entry at
the left gable end.

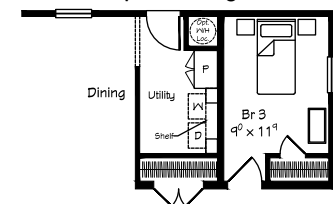
Optional Bath
Configuration
with 4260
Shower



Optional Kitchen
Configuration



Crawl Space Configuration



Le Grand

RANCH 1562

1562 sq. ft. • 3 BRs • 2 Baths

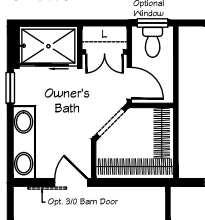
RANCH



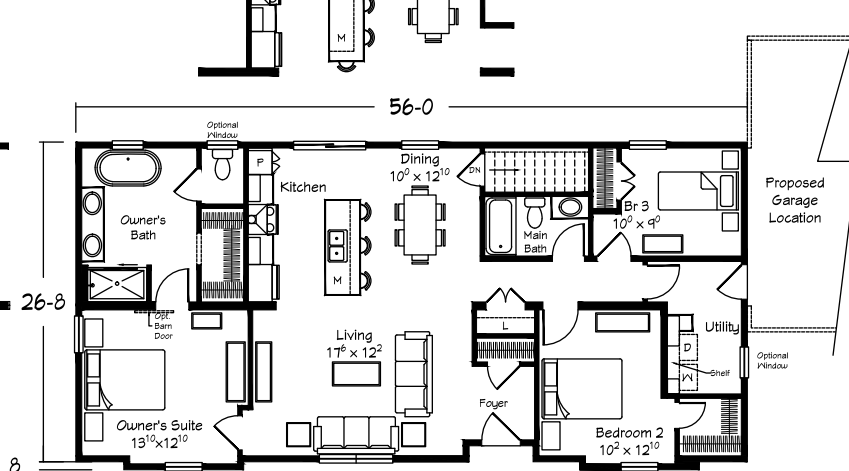
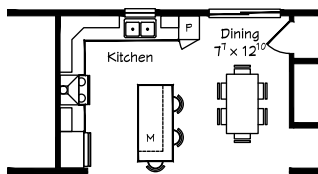
Scan for
interior views

Shown with site built garage.

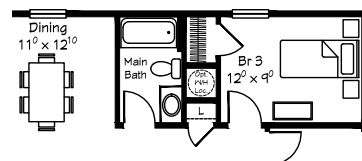
Optional Bath
Configuration
with 4260
Shower



Optional Kitchen Configuration



Optional Crawl Space
Configuration

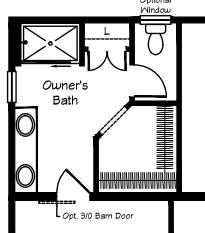


Le Grand

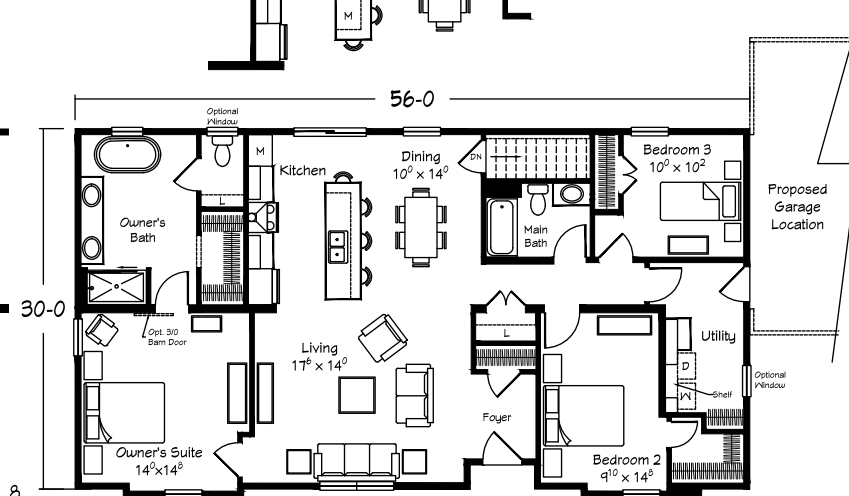
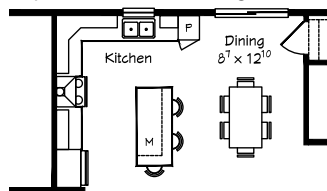
RANCH 1507

1507 sq. ft. • 3 BRs • 2 Baths

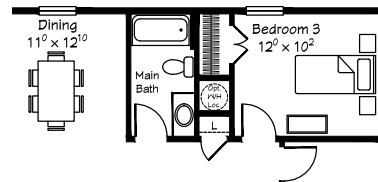
Optional Bath
Configuration
with 4260
Shower



Optional Kitchen Configuration



Optional Crawl Space
Configuration



Le Grand

RANCH 1678

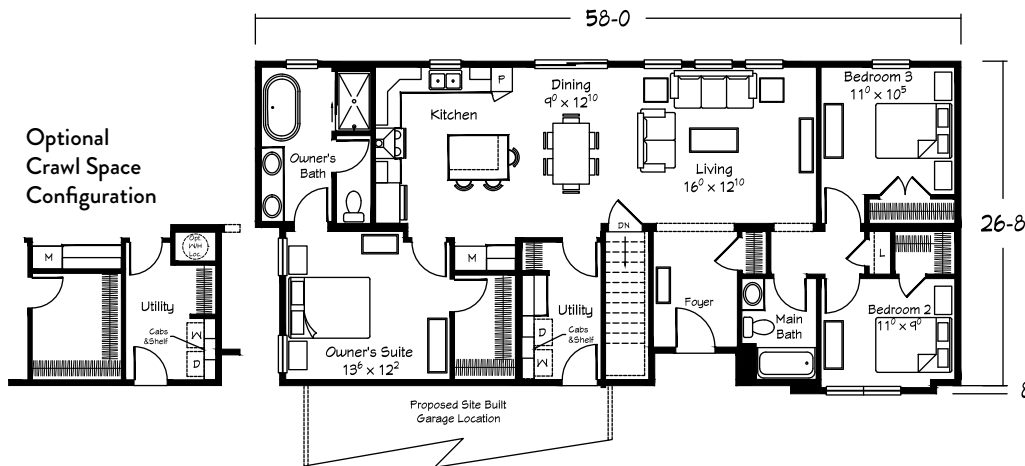
1678 sq. ft. • 3 BRs • 2 Baths

RANCH

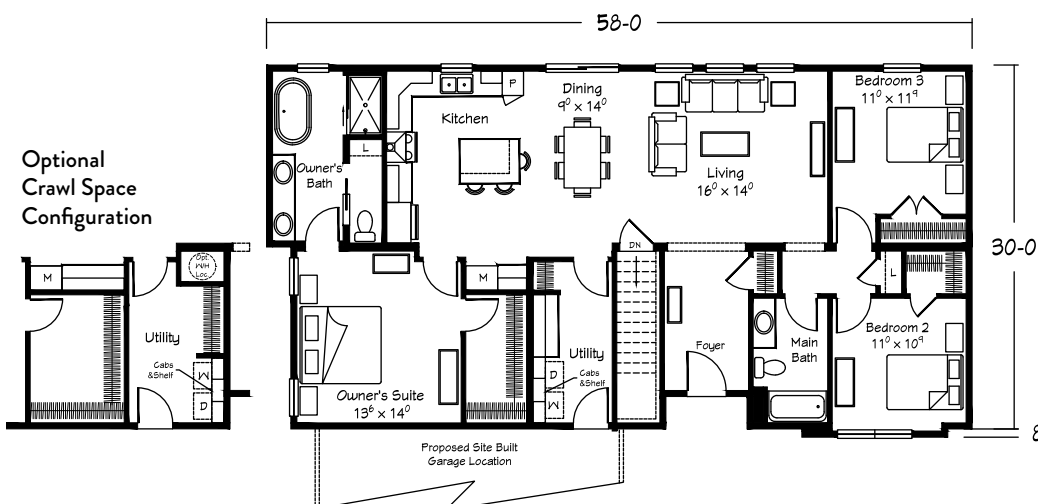


Scan for
interior views

Shown with site built garage.



Le Grand
RANCH 1511FG
1511 sq. ft. • 3 BRs • 2 Baths



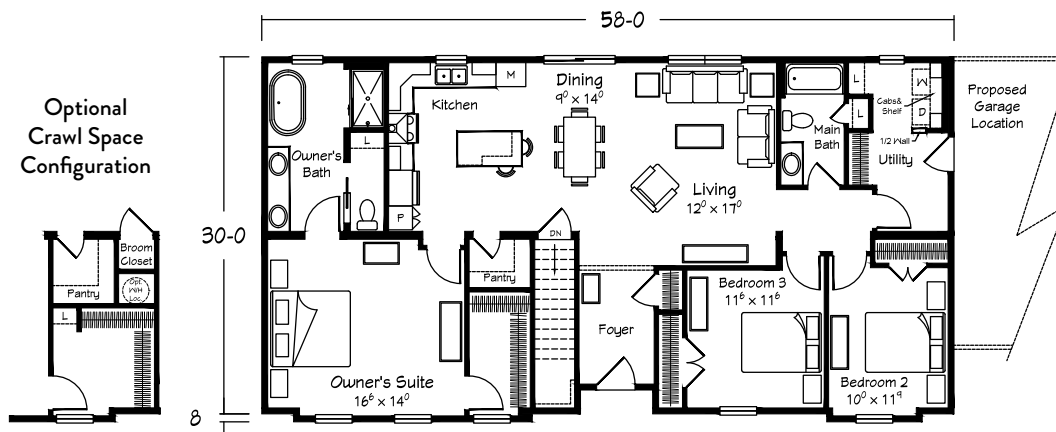
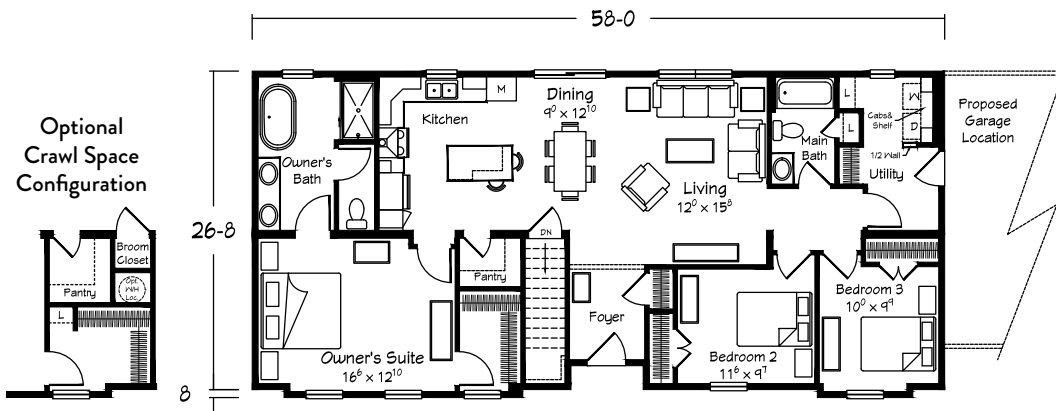
Le Grand
RANCH 1695FG
1695 sq. ft. • 3 BRs • 2 Baths

RANCH



Scan for
interior views

Shown with site built garage.



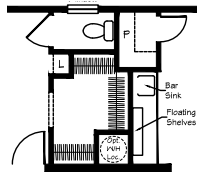
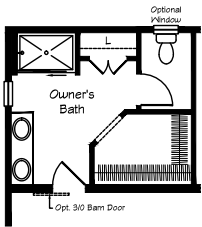
RANCH



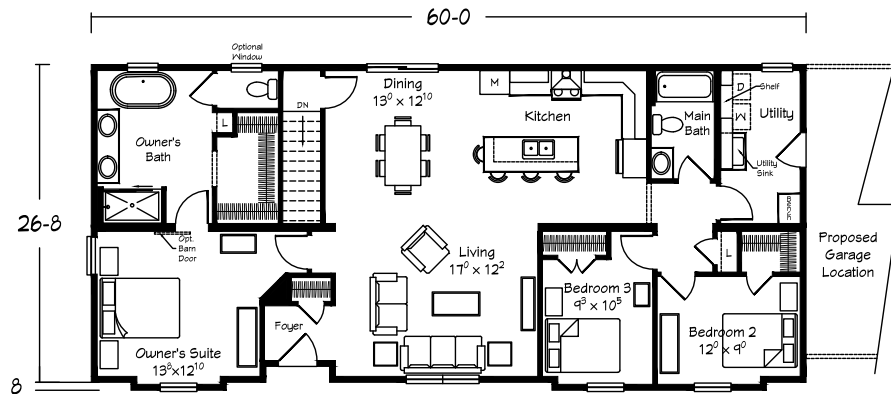
Scan for
interior views

Shown with site built garage.

Optional Bath
Configuration
with 4260
Shower



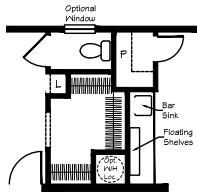
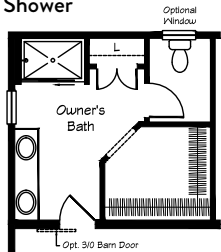
Optional Crawl Space
Configuration w/included wet bar



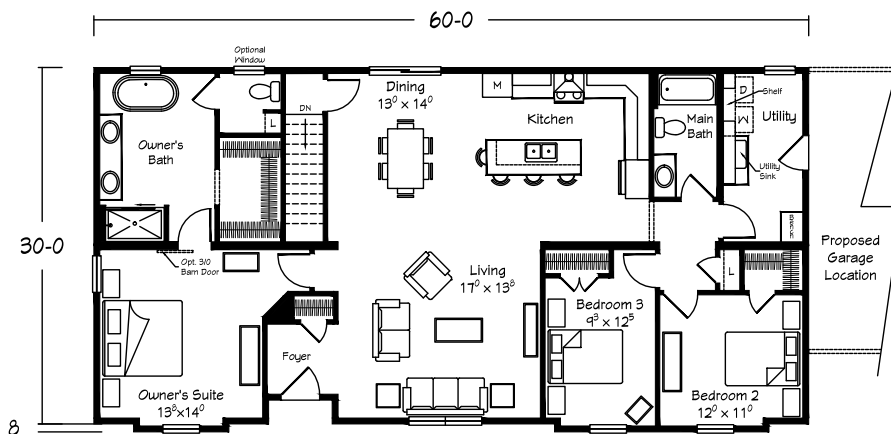
Le Grand
RANCH 1610

1610 sq. ft. • 3 BRs • 2 Baths

Optional Bath
Configuration
with 4260
Shower



Optional Crawl Space
Configuration w/included wet bar



Le Grand
RANCH 1802

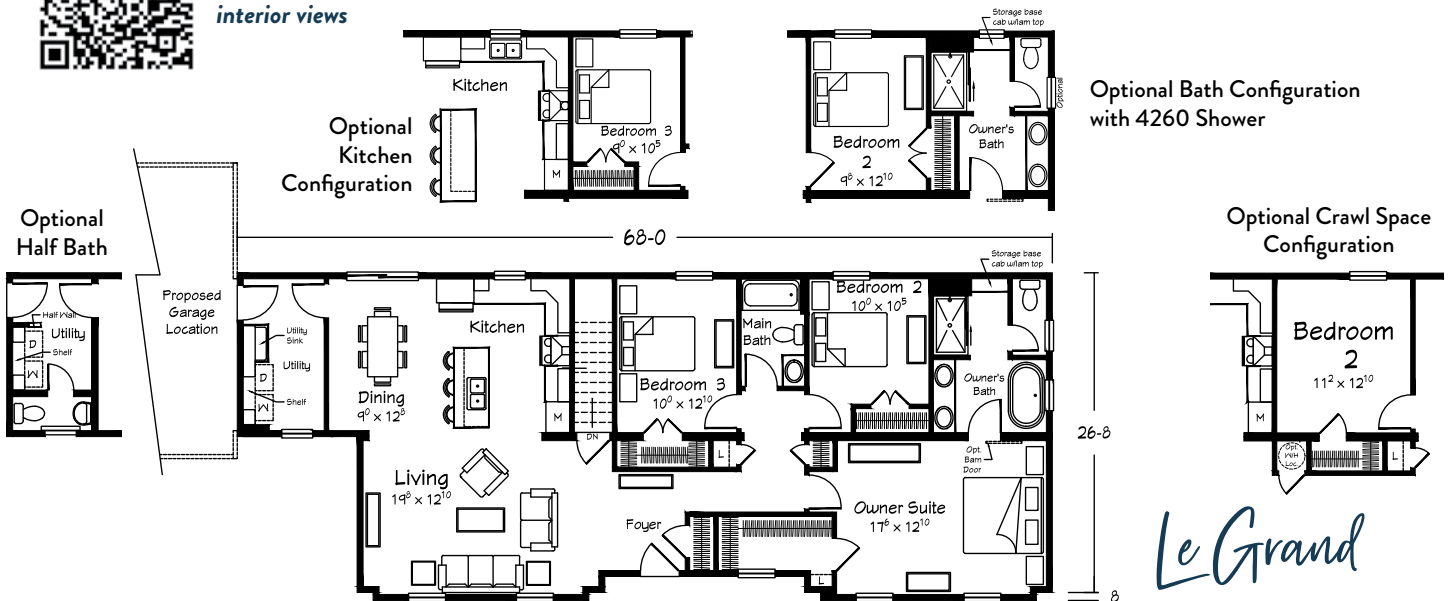
1802 sq. ft. • 3 BRs • 2 Baths

RANCH



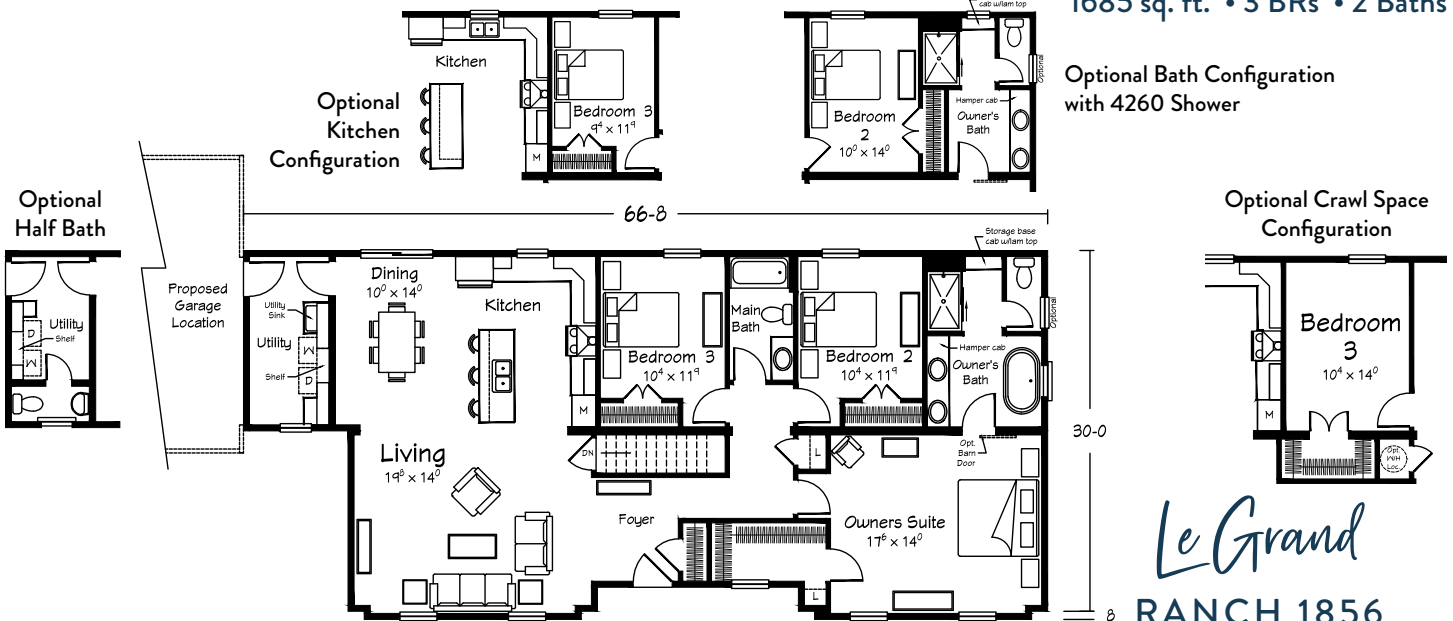
Scan for
interior views

Shown with site built garage.



Le Grand
RANCH 1685

1685 sq. ft. • 3 BRs • 2 Baths



Le Grand
RANCH 1856

1856 sq. ft. • 3 BRs • 2 Baths

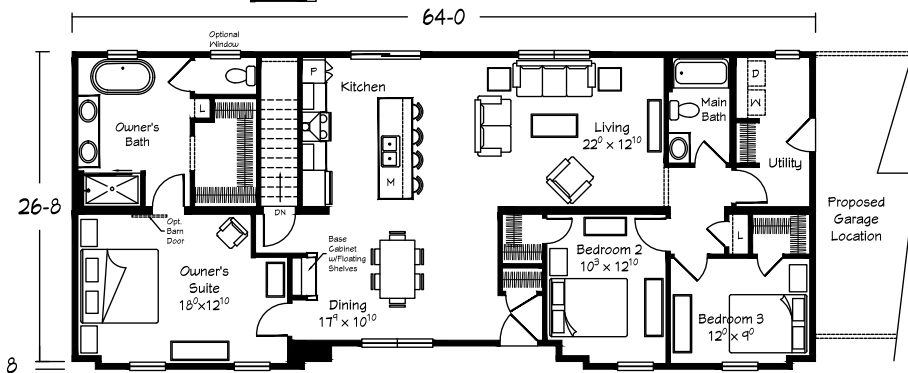
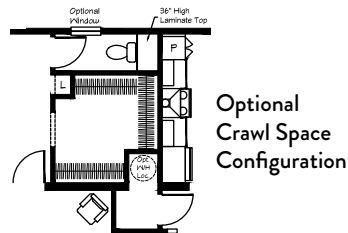
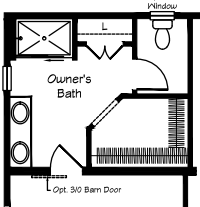
RANCH



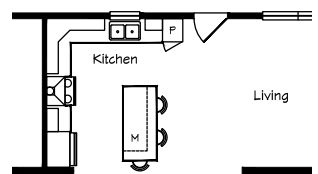
Scan for
interior views

Shown with site built garage.

Optional Bath
Configuration
with 4260
Shower



Optional Kitchen
Configuration

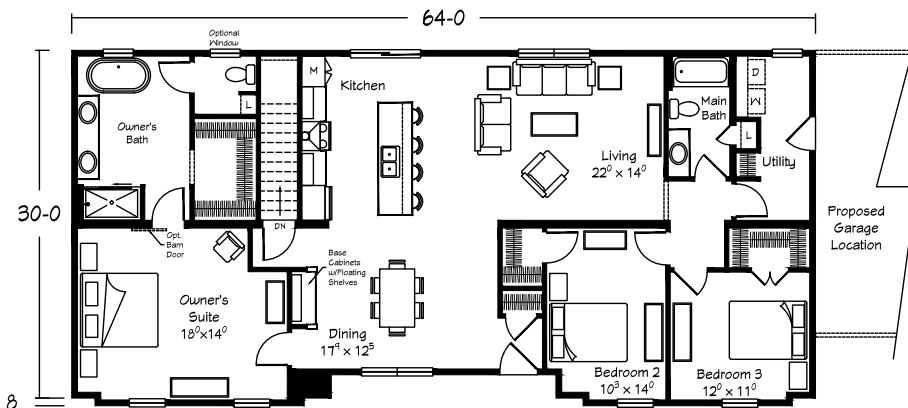
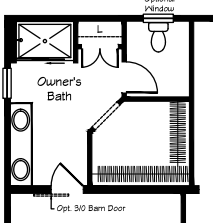


Le Grand

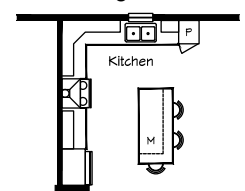
RANCH 1705

1705 sq. ft. • 3 BR • 2 Baths

Optional Bath
Configuration
with 4260
Shower



Optional Kitchen
Configuration



Le Grand

RANCH 1900

1900 sq. ft. • 3 BR • 2 Baths

RANCH

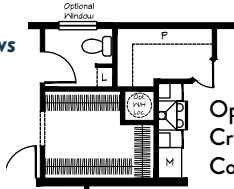
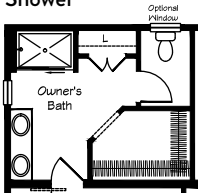


Scan for
interior views

Shown with site built garage.

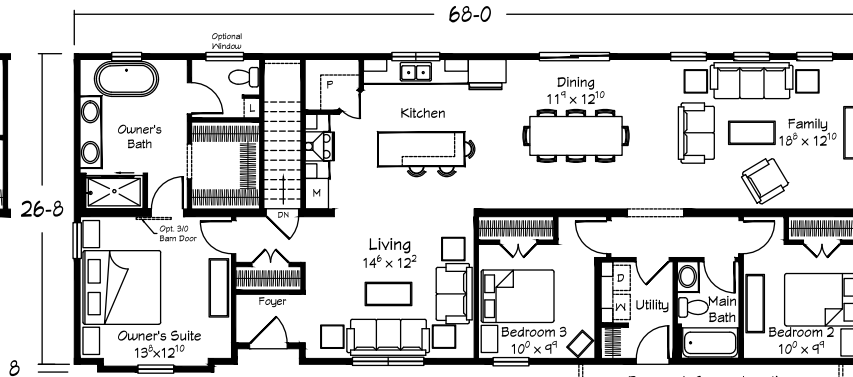
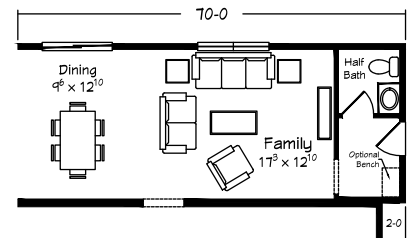
See back cover of this brochure for optional front elevation of this plan

Optional Bath
Configuration
with 4260
Shower



Optional
Crawl Space
Configuration

Optional 2' Extension w/
1/2 Bath (adds 28 sqft)

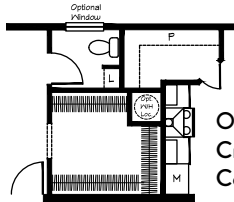
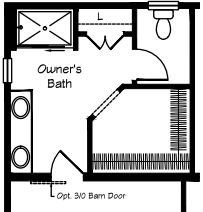


Le Grand

RANCH 1809FG

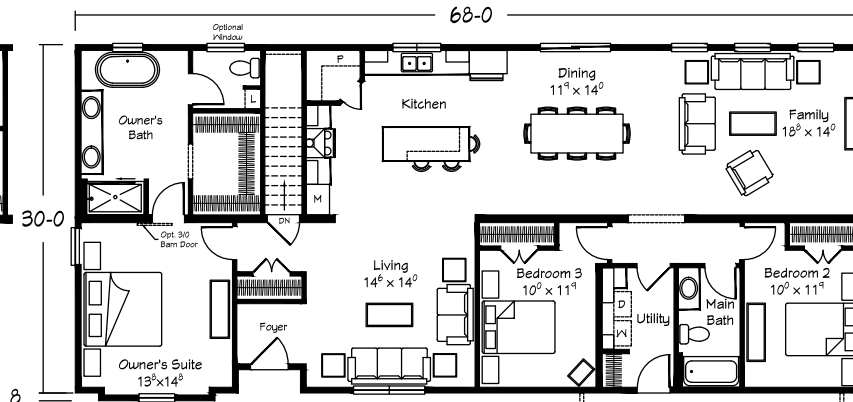
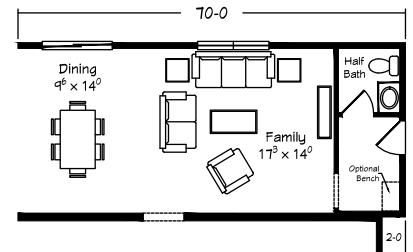
1809 sq. ft. • 3 BRs • 2 Baths

Optional Bath
Configuration
with 4260
Shower



Optional
Crawl Space
Configuration

Optional 2' Extension w/
1/2 Bath (adds 30 sqft)

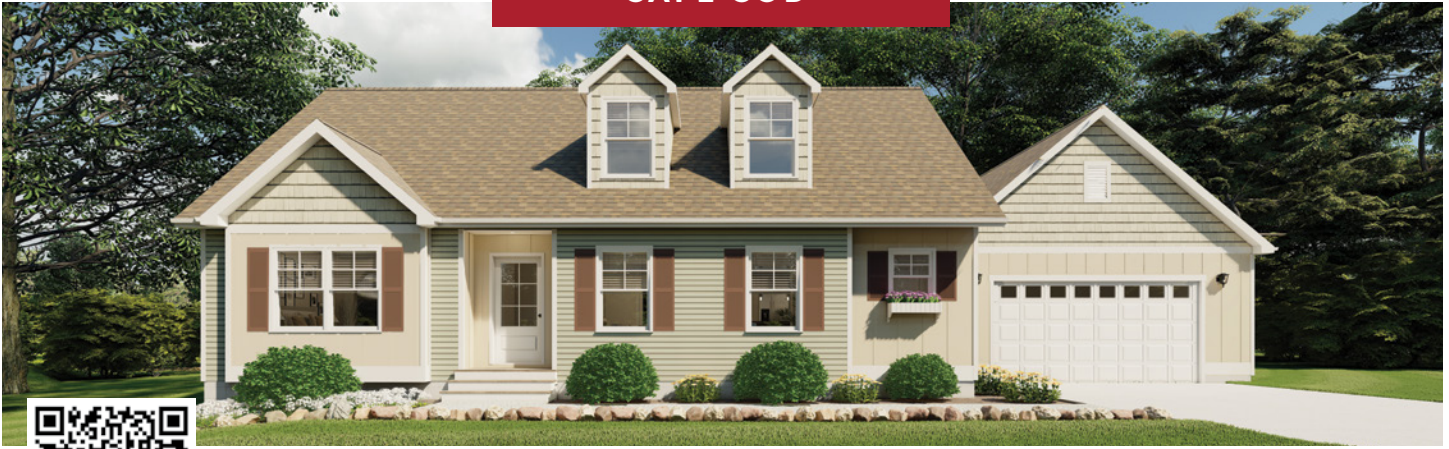


Le Grand

RANCH 2030 FG

2030 sq. ft. • 3 BRs • 2 Baths

CAPE COD

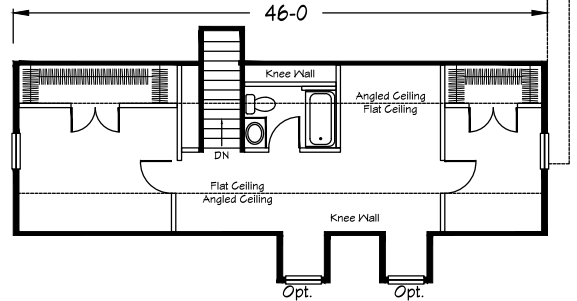


Scan for
interior views

Shown with site built garage.

Proposed Upper Level

Outline of Roof Below



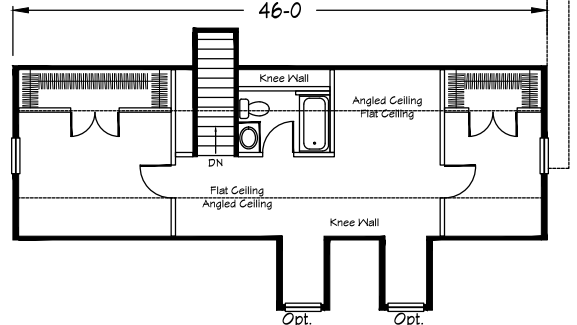
Le Grand

CAPE COD 1940

1940 sq. ft. • 3 BRs • 2.5 Baths
(with completion of 690 sq. ft. upper level)

Proposed Upper Level

Outline of Roof Below



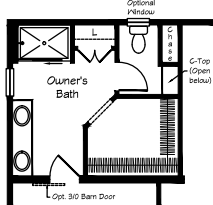
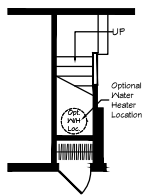
Le Grand

CAPE COD 2088

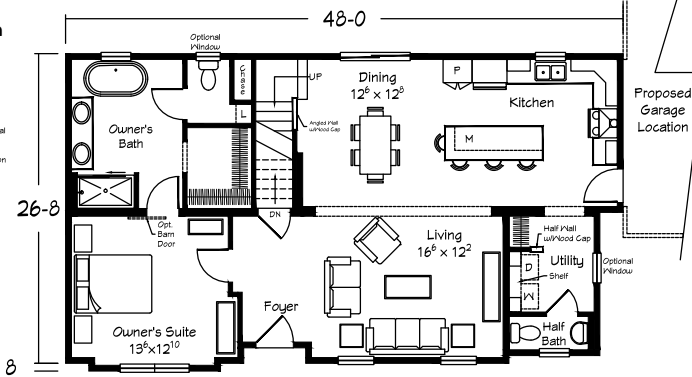
2088 sq. ft. • 3 BRs • 2.5 Baths
(with completion of 690 sq. ft. upper level)

Total "sq. ft. Living Area" shown for Cape Cod style plans assumes completion of total available square footage on the upper level. Optional dormer square footage is not included in the listed total. Finish materials and fixtures are not included. The proposed upper level must be site-finished by your selected builder.

Optional
Crawl Space
Configuration

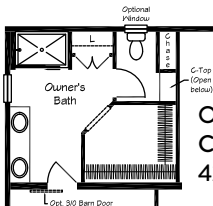
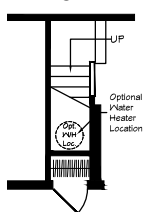


Optional Bath
Configuration with
4260 Shower

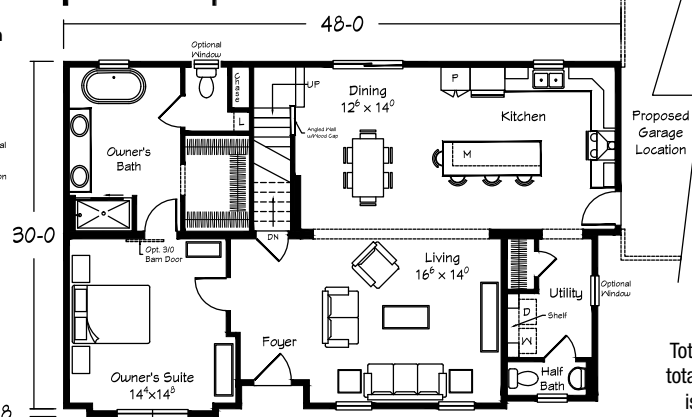


Proposed
Garage
Location

Optional
Crawl Space
Configuration



Optional Bath
Configuration with
4260 Shower



Proposed
Garage
Location

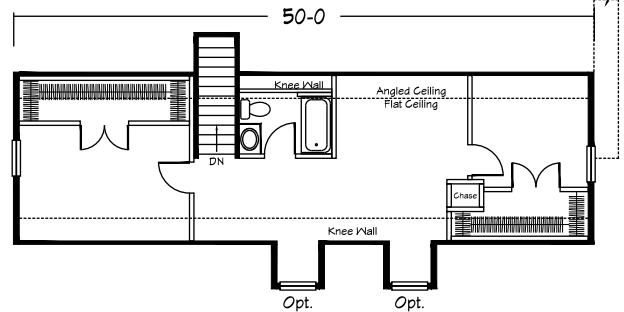
CAPE COD



Scan for
interior views

Shown with site built garage.

Proposed Upper Level

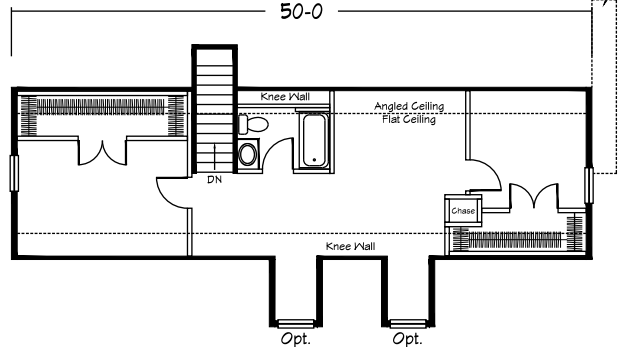


Le Grand

CAPE COD 2106

2106 sq. ft. • 3 BRs • 2.5 Baths
(with completion of 742 sq. ft. upper level)

Proposed Upper Level

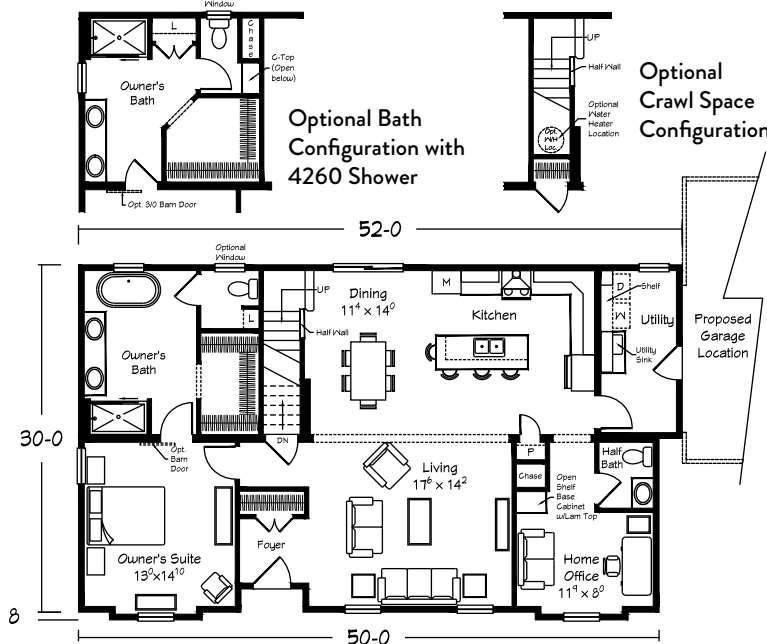
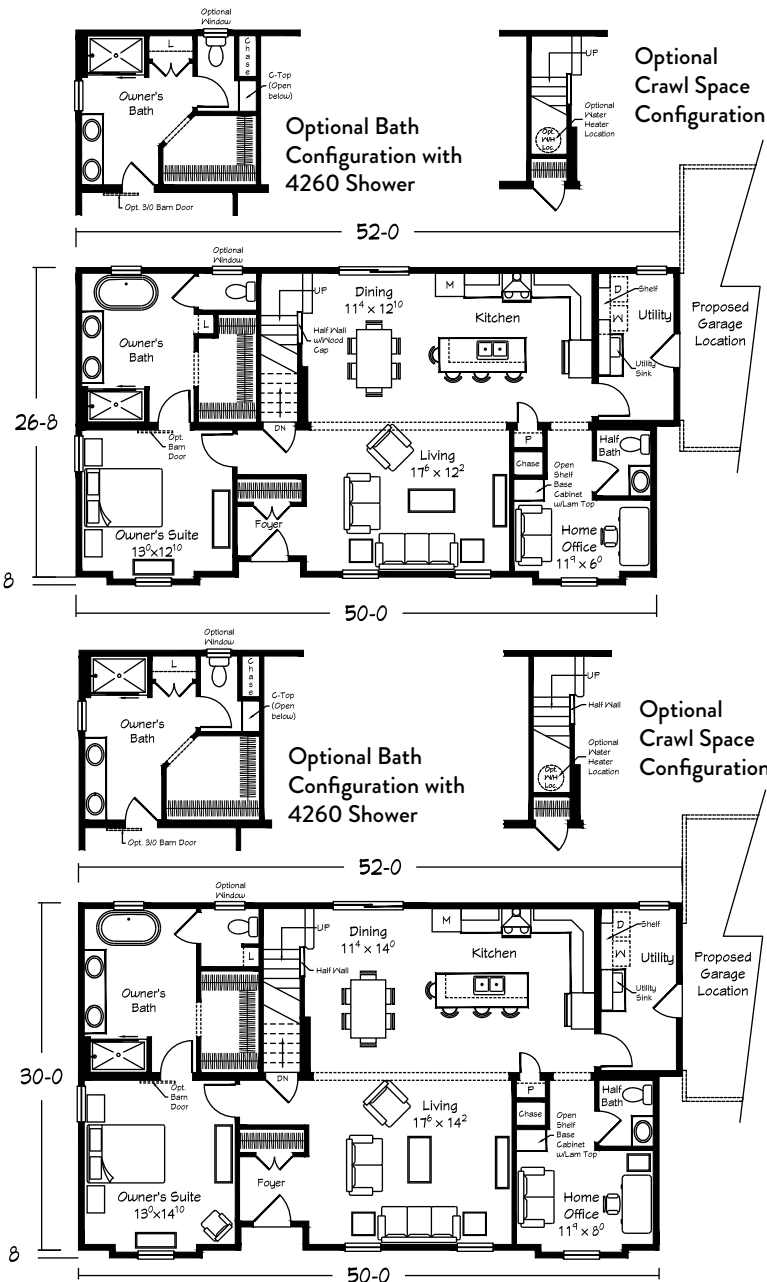


Le Grand

CAPE COD 2267

2267 sq. ft. • 3 BRs • 3.5 Baths
(with completion of 742 sq. ft. upper level)

Total "sq. ft. Living Area" shown for Cape Cod style plans assumes completion of total available square footage on the upper level. Optional dormer square footage is not included in the listed total. Finish materials and fixtures are not included. The proposed upper level must be site-finished by your selected builder.

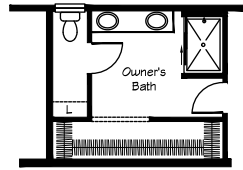


CAPE COD

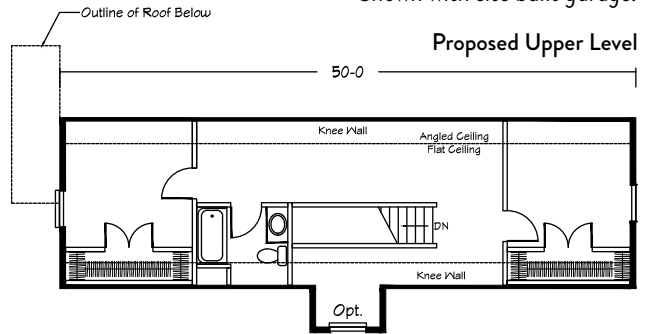


Scan for
interior views

Shown with site built garage.



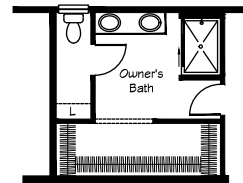
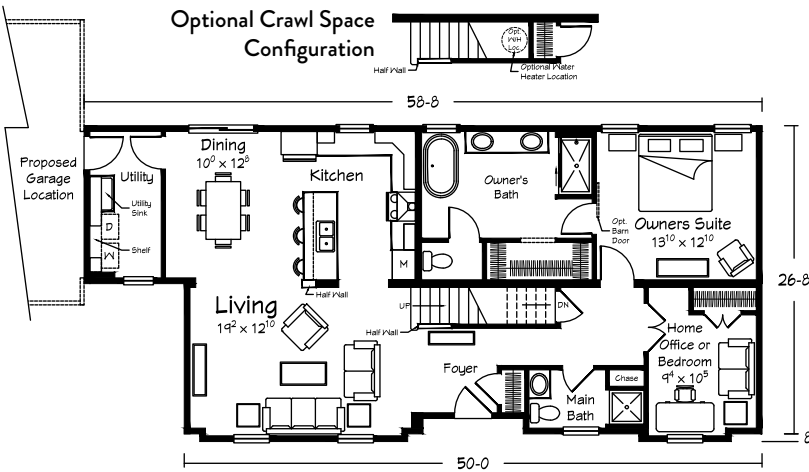
Optional Bath
Configuration with
4260 Shower



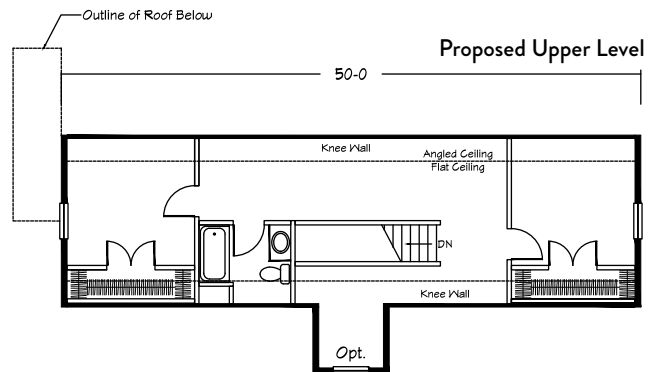
Le Grand

CAPE COD 2200

2200 sq. ft. • 4 BRs • 3 Baths
(with completion of 742 sq. ft. upper level)



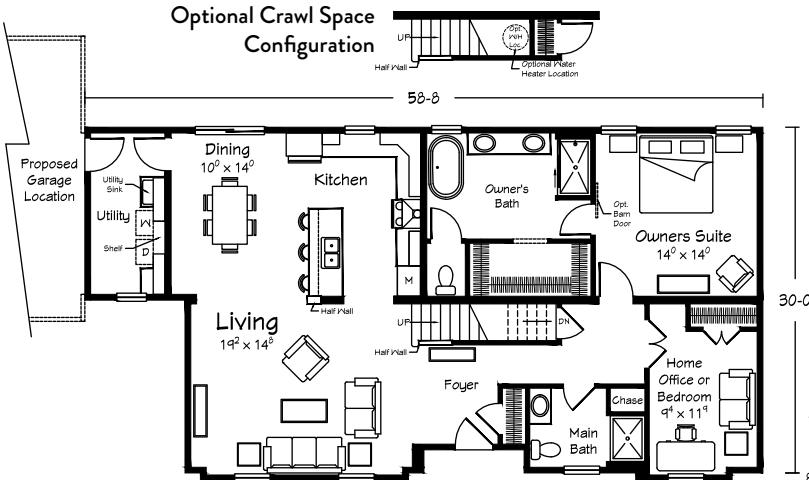
Optional Bath
Configuration with
4260 Shower



Le Grand

CAPE COD 2370

2370 sq. ft. • 4 BRs • 3 Baths
(with completion of 742 sq. ft. upper level)



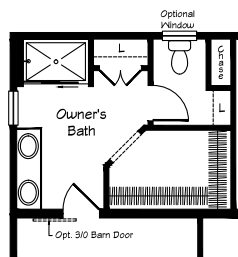
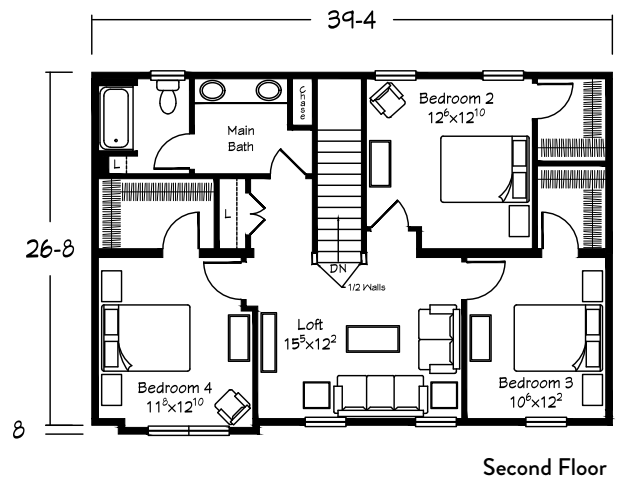
Total "sq. ft. Living Area" shown for Cape Cod style plans assumes completion of total available square footage on the upper level. Optional dormer square footage is not included in the listed total. Finish materials and fixtures are not included. The proposed upper level must be site-finished by your selected builder.

TWO STORY



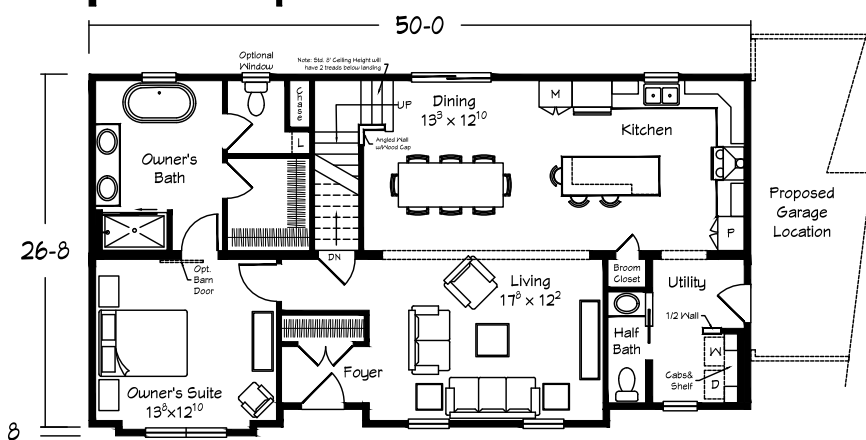
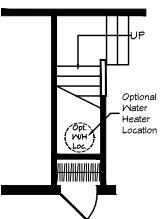
Scan for
interior views

Shown with site built garage.



Optional Bath
Configuration
LG 2-Story 2372

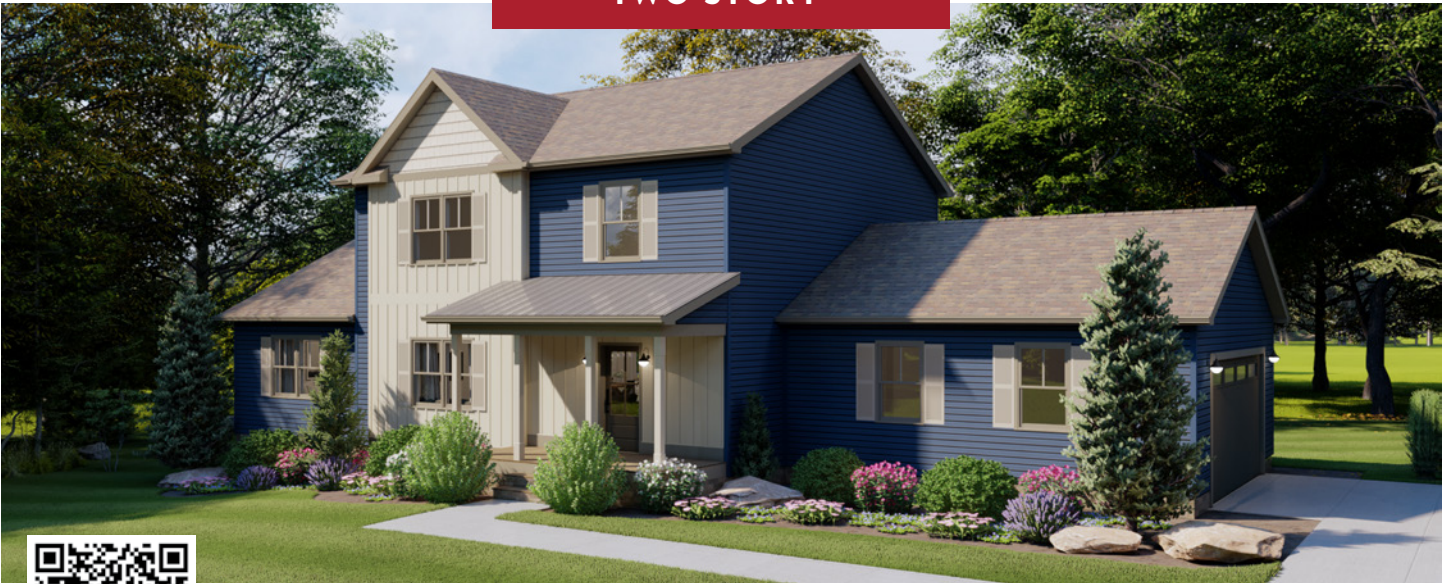
Crawl Space
Configuration



Le Grand TWO STORY 2372

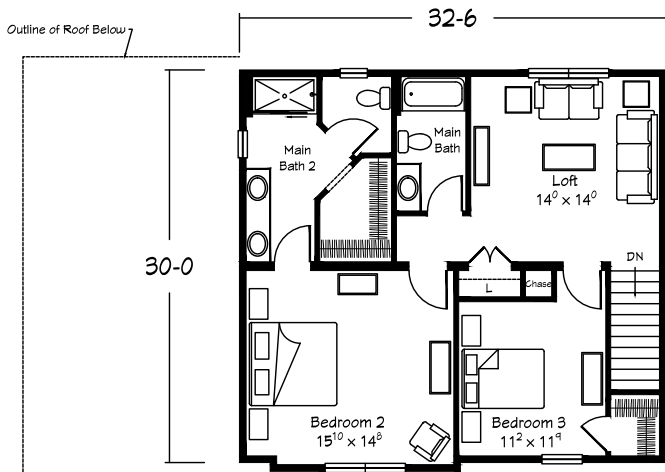
1314 sq. ft. First Floor
983 sq. ft. Second Floor
2372 sq. ft. Total
4 BRs • 2.5 Baths

TWO STORY

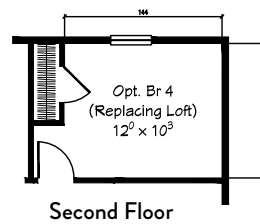


Scan for
interior views

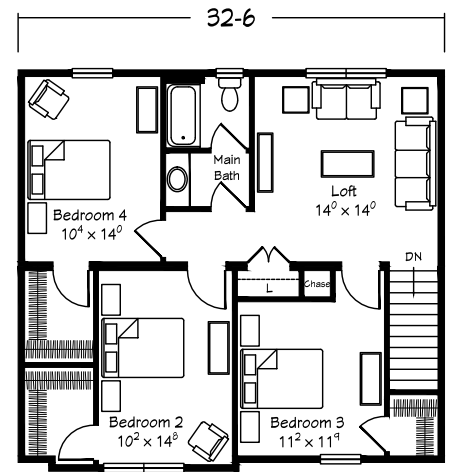
Shown with site built garage.



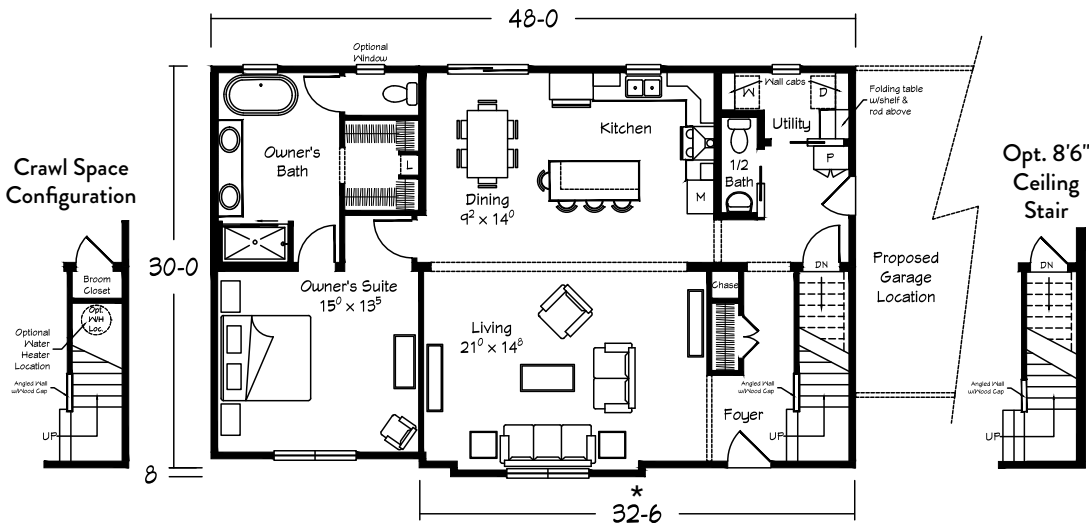
Standard Second Floor Plan



Second Floor



Optional Second Floor Plan



*Please note: This plan is also available in 32'-6" first floor configuration *without* the first floor owner's suite. Request Le Grand Two Story 1964 plan for details.

Le Grand
TWO STORY 2418
1435 sq. ft. First Floor
983 sq. ft. Second Floor
2418 sq. ft. Total
4 BRs • 2.5 Baths



LeGrand Ranch 1809/2030 with optional bump-out gable and windows replacing front garage location.

Your approved
Ritz-Craft
Homebuilder:



Approved homebuilders are independent business entities and are not agents of Ritz-Craft Corporation.
Due to occasional updating of building codes and Ritz-Craft's continuous product improvement, specifications are subject to change without prior notification. Be sure to request a copy of Homestead Series specifications from your selected homebuilder.
Floorplans and renderings are ©2023 Ritz-Craft Corporation. 0924