

MATTYDALE CAPE




Ritz-Craft
Custom Building Simplified™

March 2022
House of the Month

The Mattydale Cape Cod plan is a traditionally styled home designed to accept a front-entry garage. The Mattydale can be built on homesites that will accept a 62' wide building footprint.

At just under 2,700 square feet of living area, you'll enjoy plenty of open and interconnected family gathering space. The large, cook's kitchen includes loads of counterspace for prepping meals and a large island/bar for casual dining. The first-floor master suite includes plenty of closet space and has a well-appointed master bath including a full tile, walk-in shower and separate makeup dressing vanity. Completion of the upper level adds a full bath and two large bedrooms with walk-in closets. Whether you have a growing family or are seeking single level living with as-needed space for guests, the Mattydale fits the bill.

3 BEDROOMS
2.5 BATHS

2,681 SQ. FT.



MATTYDALE CAPE

Benchmark Specifications
Special Package Pricing available through September 2022

Please note: Kitchen and bath cabinet configurations as shown are standard in the House of the Month Package. Upgraded cabinet styles, hardware and finish colors are shown for depiction purposes and not included. Personal selections for cabinets and hardware to be priced separately. All appliances (other than range hoods shown) are optional.

- 3 over 1 window grids throughout
- (3) pairs of louvered shutters
- (1) additional front porch light (59016BK lights on front)
- RCDT front door with (1) RCSJ sidelite (primed--paint optional)
- Fire-rated door at garage entry area
- (2) 4'-8" Cape roof dormers
- Vinyl board & batten siding for (2) sides of front porch area (based on 6' x 10' porch)
- PORTSMOUTH vinyl shakes for dormers

EXTERIOR FEATURES

Included in the House of the Month Package

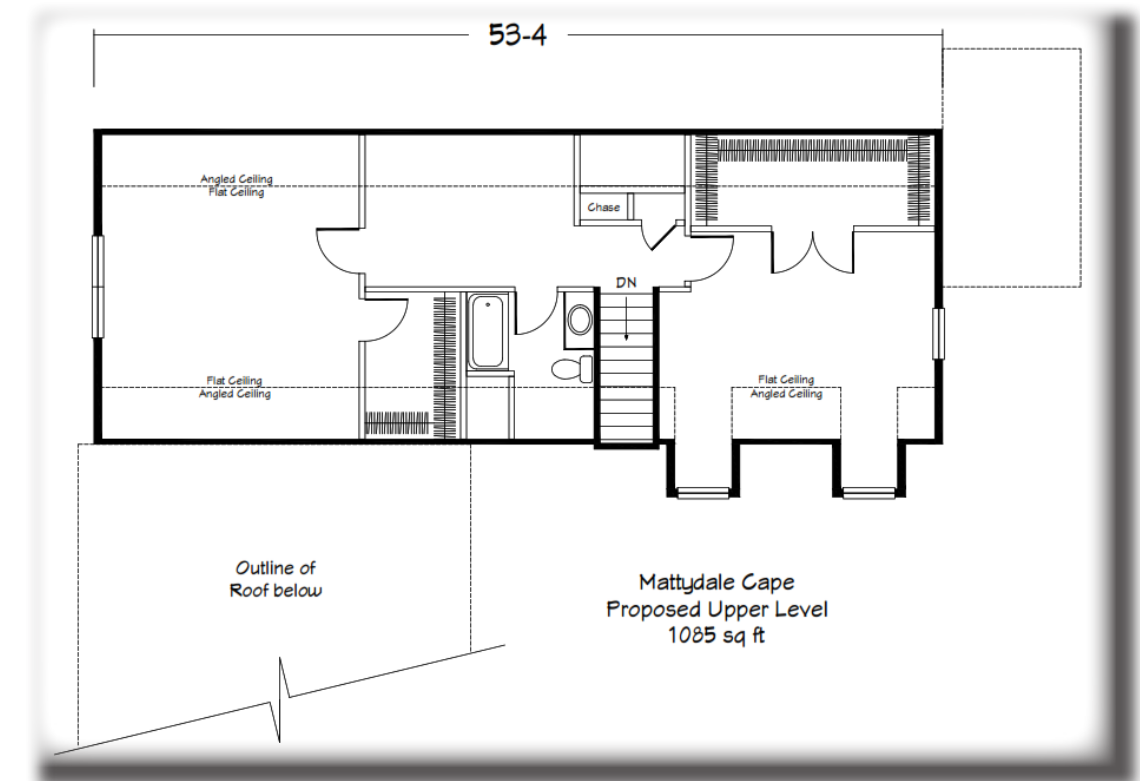
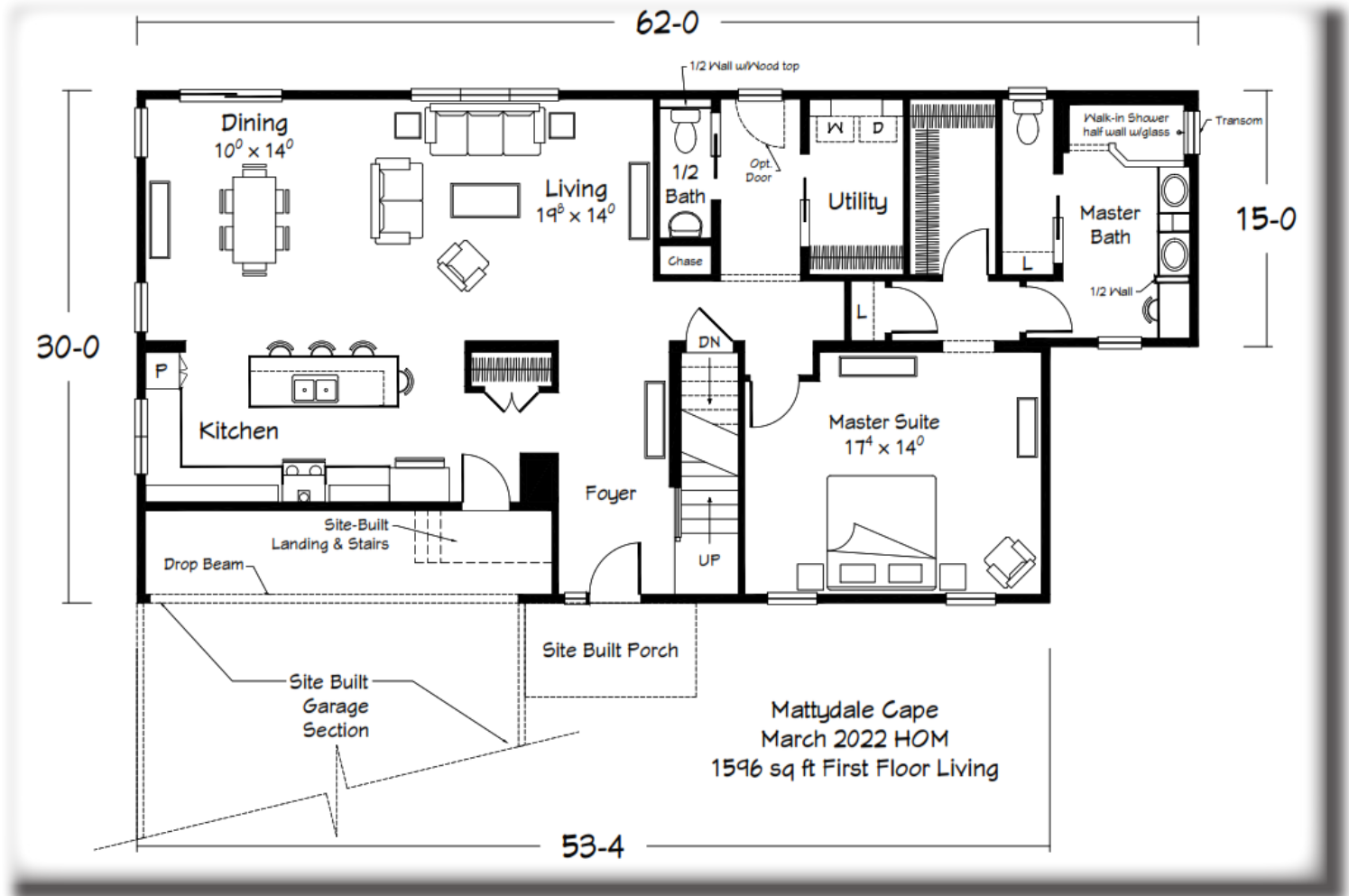
Please Note: Shown with site-built porch and garage



INTERIOR FEATURES

Included in the House of the Month Package

- 8'-6" ceiling height throughout (9' option available most areas)
- Prairie stair railing
- 2-panel interior doors with Arts & Crafts trim
- Pocket doors per plan
- 36" height kitchen wall cabinets
- Tall/Deep refrigerator overhead cabinet with (2) end panels
- Tall/Deep pantry cabinet
- HANSTONE group-2 kitchen countertops
- 4"x 12" glass backsplash tile
- Stainless steel chimney range hood
- Pots & Pans drawer
- Polymer base Lazy Susan carousel
- Microwave base cabinet
- (2) hanging pendant lights over island/bar (#41010CF219888)
- (5) recessed lights in kitchen
- MANNINGTON "Restorations" Laminate Plank Flooring in Foyer, LR, DR, Kitchen, 1/2 Bath, Utility and Hall areas
- Rectangle pedestal sink in 1/2 bath
- "Mini-Infinity" full tile, walk-in shower with glass divider in master bath
- Fixed glass transom window in master bath shower
- FORMICA 180 FX counter tops in master bath
- RevoTile flooring in master bath
- Ventilated wood shelving in master linen areas (2 locations)
- Wall cabinets with wood shelf over W/D area





KITCHEN



LIVING ROOM

MASTER BEDROOM & BATH

