



House of the Month

"NORTHBROOKE"

Heritage Specifications with Included Features:

The artist's rendering shown includes optional & suggested features.

- 5/12 Roof Pitch (7/12 on MBR & BR2 Pods)
- 2 Pair-Panel Shutters (as shown)
- Wide Exterior Trim around Foyer Windows (replacing standard shutters)
- Shingled Eave Returns (as shown)
 - Window Mantels
 - Window Grids
 - Oval Glass Front Door
- Flat Panel Maple Kitchen Cabinets (Heritage Specs)
 - BR Ceiling Lites - 206 NI
 - Nickel Sconce Lights In Baths - 5337 NI
- Extended Refrigerator Overhead Cabinet
 - 5 1/4 " Base Molding
 - 2 1/4 " Case Molding
- Cabinet Cove Molding On O/H Cabs In Kitchen
 - Cabinet Pulls
 - House Wrap



11/1/09



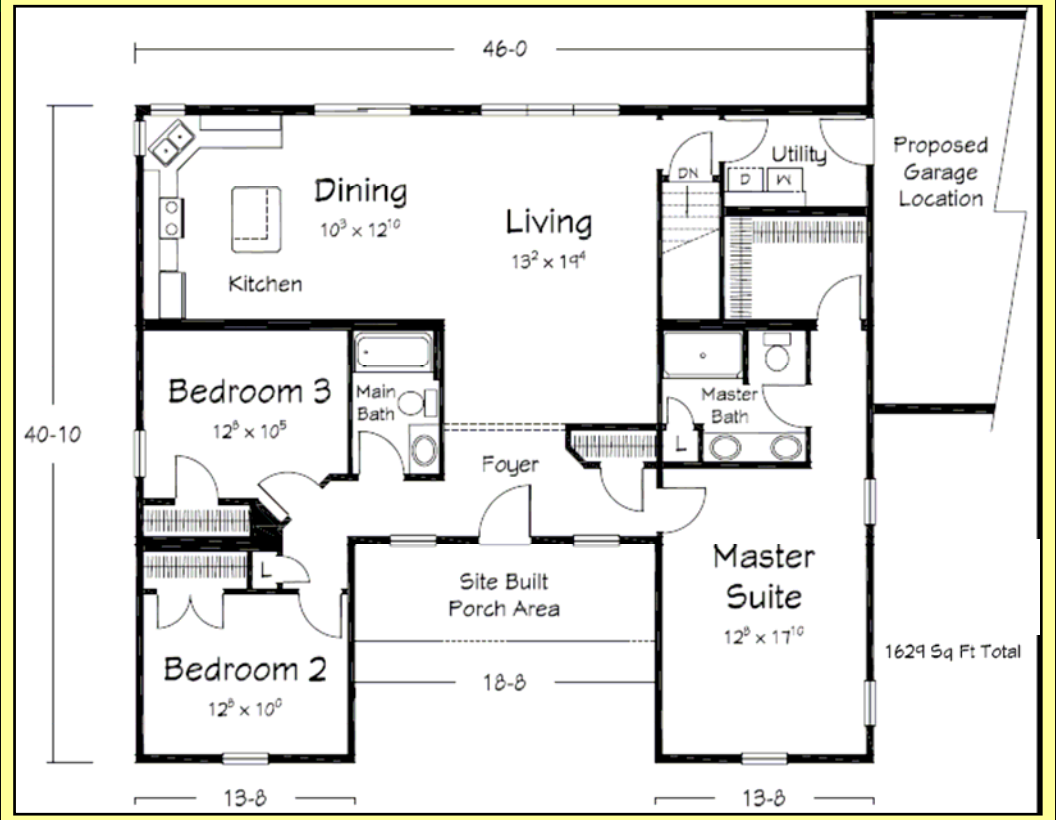
House of the Month

"NORTHBROOKE PLAN B"

Heritage Specifications with Included Features:

The artist's rendering shown includes optional & suggested features.

- 5/12 Roof Pitch (7/12 on MBR & BR2 Pods)
- 2 Pair-Panel Shutters (as shown)
- Wide Exterior Trim around Foyer Windows (replacing standard shutters)
- Shingled Eave Returns (as shown)
 - Window Mantels
 - Window Grids
 - Oval Glass Front Door
- Flat Panel Maple Kitchen Cabinets (Heritage Specs)
 - BR Ceiling Lites - 206 NI
 - Nickel Sconce Lights In Baths - 5337 NI
- Extended Refrigerator Overhead Cabinet
 - 5 ¼ " Base Molding
 - 2 ¼ " Case Molding
- Cabinet Cove Molding On O/H Cabs In Kitchen
 - Cabinet Pulls
 - House Wrap



11/1/09